

# NewsEdit SC v5.0 Nonlinear Editor

*Cost-Effective, Nonlinear  
Editing for News*

Grass Valley™ products offer the most comprehensive, multi-format solutions for acquisition, production, storage, and playback—and a strong foundation for centralized, proactive status and activity monitoring.

With technologies that touch everything from television programming to feature-length films, Grass Valley products include the most comprehensive, multi-format solutions for acquisition, production, storage, and playback. These solutions blend unsurpassed applications, reliability, and performance with proven IT technologies and concepts to make them the highest quality, most cost-effective, and most flexible available for broadcast and film professionals.

As part of this broad capability, the Grass Valley Digital News Production solution touches the entire news production process, from field editing and low-resolution edit decision list creation at the journalist's desktop through a finished news story that is automatically played to air at a user-definable timeframe.

Grass Valley offers a solution that addresses the entire news production process. One that works as fast as you do. One that can get stories on air quickly and efficiently. One that can increase the production value of your news content. And one that is more economical than tape-based solutions.

The NewsEdit™ SC system is part of the Grass Valley Digital News Production Solution—the first cost-effective, truly open, and standards-based solution for digital news production.

This solution also includes the FeedClip™ interactive feed capture system; NewsBrowse™ desktop-based, low-resolution browser and editor; NewsEdit LT laptop-based nonlinear editor; NewsEdit SC, a software codec-based, lower cost version of NewsEdit; and NewsEdit XT, Grass Valley's full featured nonlinear editor which allows



the user to select just the options they need for the maximum performance; NewsShare™ extension to the Grass Valley shared storage architecture, with NAS and SAN options; Profile® XP Media Platform for ingest and playout; NewsQ™ manual playback system; NewsQ Pro news playback control system; and the Profile Network Archive.

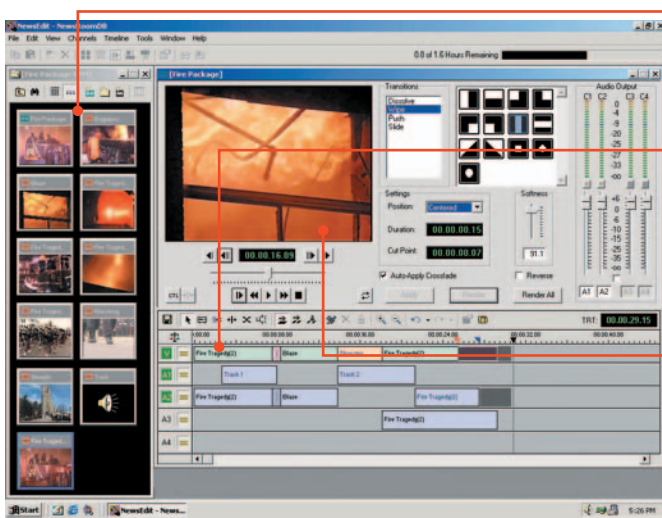
With the addition of the NewsEdit SC system, this solution now includes a software codec-based nonlinear editor that offers a new level of affordability to broadcast news organizations of all sizes.

Based on the NewsEdit nonlinear editor, the fastest hard-news editing system available for news, the NewsEdit SC combines cuts-only edit bay

## key features

- Software-based nonlinear editor for broadcast newsroom based on popular Grass Valley NewsEdit system
- Supports DV, DVCAM and DVCPRO formats in NTSC and PAL
- Tower or rack configurations available
- Record from tape to timeline and edit directly to the timeline without pre-digitizing
- View edits as they are made with Realtime Edit to eliminate the need to go back and review edits
- Seamless integration with leading newsroom computer systems (NRCS) such as AP/ENPS and iNews, and with digital delivery systems such as Pathfire via Profile interface
- Comprehensive transitions including dissolves, pushes, slides and SMPTE wipes, for creating compelling transitions and stylized productions
- Adjust audio levels dynamically
- MP3, CD, and Wave audio file import/export capabilities
- Top and tail editing automate multi-track trimming
- Go-to points let editors move quickly through a package
- Controls transport in-band via 1394 or RS-422 capable camcorders or decks
- Optional external jog/shuttle control for familiar tape-style editing
- Optional audio mixer with four motorized faders
- Optional color correction and 2D effects
- Optional Chyron Lyric integrated character generator (CG) plug-in tools
- NewsShare shared database support with SAN and NAS storage options and Quality of Service-based bandwidth management tools

## The NewsEdit User Interface



### Media Bin

Used for organizing clips and storyboarding packages. Bins can be viewed in either thumbnail or text mode and clips can be quickly sorted and sifted by name, duration, description, and other familiar database categories.

### Timeline

Allows an editor to view an entire story while editing. The timeline supports one track of video and up to eight tracks of audio. Clips and voice-overs can be recorded directly to the timeline or imported from the media bin. From within the timeline, clips can be trimmed with frame accuracy, split, moved, or reordered. Real-time effects preview, such as audio crossfades, dissolves, and wipes can be added quickly.

### Video Window

Allows viewing of media being recorded or played back. When performing trim edits, two or more video windows in the user interface display the respective in and out points of consecutive clips. Because the NewsEdit XT editor can record and play back simultaneously, it can imitate a record deck's PB/EE capability of an insert edit. The NewsEdit XT editor is the only nonlinear editing application to retain this familiar convention relied upon by tape editors.

capabilities, traditional A/B Roll Suite transition functions, and storage and network connectivity options to create a highly cost-effective editing toolset for news.

Available in tower or rack configurations, the NewsEdit SC system offers broad storage options, support for the Grass Valley open storage area network (SAN) and network attached storage (NAS) systems.

By combining the feel of a tape-to-tape environment with the speed of nonlinear functionality—as well as the performance and cost-effectiveness of Grass Valley storage systems—the NewsEdit SC system makes triage, editing, and story-creation workflows familiar, fast, and efficient. News organizations can create finished stories with less staff and equipment, maximizing the return on their investments.

The NewsEdit SC system supports DV media, offers tight DV camcorder integration, and features up to 4 in, 8 mixed, and 4 out audio channels (depending on source), internal storage, and a variety of networking options. Using it, editors can trim clips with frame accuracy, and add transitions and audio tracks.

Like the full-featured Grass Valley NewsEdit nonlinear editor, the NewsEdit SC system lets you see an edit while it's being made—there's no need to go back and review. This capability makes the NewsEdit SC system twice as fast as other nonlinear editors.

Editors can also use the NewsEdit SC system to edit directly from camera tape to disk; the system controls the camera's VTR through a 1394 connection to the camera. They can also use the editor to control an external tape deck via an RS-422 connection.

NewsEdit SC now supports use of an optional second VGA monitor. In addition NewsEdit SC also supports 16X9 as well as 4X3 image formats.

## The News Edit User Interface

### Real-Time Transition Preview

With NewsEdit SC's transition tool, editors see a real-time transition preview with dissolves, wipes (with edge softness), pushes, and slides as well as color correction and 2D DVE options. The transition tool is one of six main tools in the user interface that make NewsEdit SC easy to use and speeds the process of delivering hard news.

### Four I/O Audio Metering and Control

With the ability to monitor and control up to four audio inputs and outputs (depending on source) as well up to eight tracks of audio on the timeline, NewsEdit SC provides users greater control of audio editing and playout. Each channel has an audio slider, pan adjustment, mute control, and soloing option. Audio adjustments can be made to an entire sequence, track, clip, or a single frame.

### Shared Storage Architecture

The NewsShare extension provides shared media database and shared storage options including SAN and NAS. Quality of Service-based bandwidth management tools enable more editors to share media.

NewsShare Security allows an administrator to set user and group permissions for common functions such as read, write, delete, etc., on a folder or sequence or clip basis through Access Control Lists or ACLs. These ACLs are compatible with Microsoft Windows ACLs and thus standard Microsoft IT tools can be used to manage users and groups. This also means that the standard Windows login that the operator uses will be his login on the SAN as well.

### Editing Features

**Record To Timeline** – Edit directly from tape to timeline without pre-digitizing just like tape-to-tape

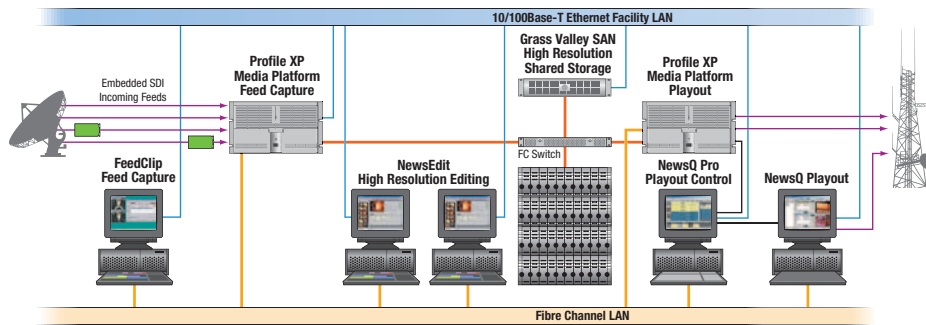
**View Edits In Progress** – With Realtime Edit, NewsEdit editors can see edits as they are made; there's never a need to play back an edit just to check it

**Audio/Video Punch-In** – Toggle individual video and audio tracks on/off while recording. Perfect for performing L-cuts on the fly

**Trimmer Window** – Trims clip In/Out points with frame accuracy. Clip trimmer can be brought up in the NewsEdit system's media bin or the timeline views

**Overwrite and Splice Edit Modes** – Overwrite edit mode performs just like an insert mode edit in tape-to-tape editing. Splice edit mode inserts a new clip between two existing clips, allowing editors to insert a shot in a story without re-editing

**Real-Time Transitions** – NewsEdit SC offers cuts, dissolves, pushes, slides, and full SMPTE wipes, color correction, and 2D options



## The Digital News Production Solution

Offering end-to-end support of DV- and MPEG-based news production, this solution is built around the Grass Valley Digital News Production Solution – including the FeedClip interactive feed capture system, NewsEdit nonlinear editing system, NewsQ manual playback system, NewsQ Pro automated news playback system, Profile XP Media Platform, Grass Valley Open SAN system, and Profile Network Archive system.

**Import/Export** – AVI, MOV, and GXF

**Transcode To/from** – MPEG, DV, and Windows Media 9

**Waveform Tool** – Quickly locate start of audio or sound transients

**Batch Capture and CMX EDL Import/Export**

**Graphics Export** – PSD, BMP, TIFF, JPG, TGA

**CG Options** – NewsEdit LT offers Chyron Lyric options, basic and advanced

**Fit-to-Fill** – Insert video, including still frames, fill-frames, or variable-speed clips, into an existing hole in a story timeline

**Cut Point Edit Tool** – Trims the cut point of two consecutive clips. For example, it allows the manipulation of the in point of one clip and out point of an adjacent clip simultaneously. The Cut Point Edit Tool is perfect for extending L-cuts and adding breathing room between two butted sound bites

**Knife Editing Tool** – Splits a clip that exists in the timeline. Perfect for handling clips that contain multiple good shots or for removing undesired material

**Integration with NRCS** – Editors can display iNews and AP ENPS text scripts and rundowns in a NewsEdit system window. A NewsEdit system and NRCS application can run on the same PC. Compatibility with low-res browsers and editors has been added through OMF EDL file import

**Mark In/Mark Out** – Marks In and Out points for clips in timeline, trimmer window, or on tape source

**Go To Points** – Help editors move quickly through a package by jumping to: Mark In/Out, Left/Right one Frame, Left/Right 10 Frames, Left/Right one Second, Previous/Next Cut Point

**Undo and Redo** – 32 levels of undo/redo

**Audio Control Features** – Audio crossfades (ideal for blending natural sound or music), audio scrubbing, voice-over recording, and audio fade control which enables the manipulation of individual frames of audio to create special effects such as natural sound audio spikes. Four fader audio mixer option

**Basic VTR functions** – Play from start, play, pause, rewind, fast-forward, and eject

## NewsEdit SC Specifications

### System Features Include:

- Software Codec for support of DV25; the codec is capable of encoding and decoding simultaneously
- 1394 Firewire video and audio I/O
- Optional integrated storage capable of holding two to six drives—storage expansion is virtually limitless with the use of external storage arrays
- High-speed network interface for links to multiple platforms
- Easy to upgrade through simple software updates and plug-ins and hardware additions

### Standard Configuration

- Intel 2.4 GHz Pentium IV, 512 MB RAM, 60 GB EIDE system drive, CD-ROM drive, 1.44 MB floppy drive, custom PS/2 keyboard, and mouse
- 6-slot PCI platform
- Dual-format compression engine
- ATI graphics card
- Ethernet 10/100Base-T network interface
- Windows XP operating system

### Supported Formats

- DV – 5:1 DVC-format DCT, intra-frame; 25 Mb/s video data rate; 720x480, 4:1:1 (NTSC); 720x576, 4:2:0 (PAL)
- DVCAM – 5:1 DVC-format DCT, intra-frame; 25 Mb/s video data rate; 720x480, 4:1:1 (NTSC); 720x576, 4:2:0 (PAL)
- DVCPRO – 5:1 DVC-format DCT, intra-frame; 25 Mb/s video data rate; 720x480, 4:1:1 (NTSC); 720x576, 4:1:1 (PAL)

### Video

- NTSC, 525/59.94 (240, 248, or 256 active lines per field)
- PAL, 625/50 (288 active lines per field)
- Inputs: 1394 Firewire
- Outputs: 1394 Firewire
- Compression: DV25

### Audio

- 48 kHz 16-bit PCM, uncompressed
- Inputs: 1394 Firewire
- Outputs: 1394 Firewire

### Time Code

Input RS-422 protocol

### Physical Dimensions

Chassis: Standard EIA Rack Mount (floor standing tower unit available)

Dimensions	cm	in.
Height (4 RU)	17.8	7
Width	48.3	19.0
Depth	53.0	20.8

### Power Requirements

- Power: 400W for rack mount system
- Voltage: Switch selectable, 120V @ 6.2A or 240V @ 3.1A
- Frequency: 47-63 Hz

### Options

- External storage expansion with RAID 0, 3 or 5
- 17" monitor and keyboard
- 36 GB, 72 GB, or 146 GB media storage
- Media drive expansion rack
- Fibre Channel or Gigabit Ethernet network interface card

## Comparison of NewsEdit XT, NewsEdit SC / SCE, and NewsEdit LT

	NewsEdit XT	NewsEdit SC / SCE	NewsEdit LT
Codec	Hardware Targa 3K	Software	Software
Platform	Tower or Rack	Tower or Rack	Laptop
Media Formats NTSC	DV, DVCAM, DVCPRO + MPEG, IMX	DV, DVCAM, DVCPRO	DV, DVCAM, DVCPRO
Media Formats PAL	DV, DVCAM, DVCPRO + MPEG, IMX	DV, DVCAM, DVCPRO	DV, DVCAM, DVCPRO
Max Data Rate	50 Mb/s	25 Mb/s	25 Mb/s
BOB Required (Break out Box)	Yes	No (IEEE 1394A Firewire)	No (IEEE 1394A Firewire)
Ethernet Workgroup	Yes	Yes	Yes
Fibre Channel option	Yes	SC – Yes, SCE – No	No
GXF transfer support	Yes	Yes	Yes
Color correction and 2D support	Yes	Yes	Yes
3D support	Yes	No	No
Tilting Options	Yes	Yes	Yes
Cuts and Transitions	Yes	Yes	Yes

## Ordering Information

**DNP-NEWEEDIT-SCT**

NewsEdit SC tower

**DNP-NEWEEDIT-SCR**

NewsEdit SC rack

**Storage Options**

Select size of drive pair for each system – maximum one pair (two drives) for tower and three pairs (six drives) for rack.

**DNP-36GBX2-INT (Tower)****DNP-73GBX2-INT (Tower)****DNP-146GBX2-INT (Tower)****DNP-36GBX2-M-INT (Rack)****DNP-73GBX2-M-INT (Rack)****DNP-146GBX2-M-INT (Rack)****Networking Options****DNP-FCX1-INT**

Single port 2G Fibre Channel adapter with LC termination

**DNP-FCX2-INT**

Dual port 2G Fibre Channel adapter with LC termination

**DNP-GIGE-CO-INT**

Gigabit Ethernet network interface

**Controller Options****DNP-EDIT-CTRL**

Edit controller + jog-shuttle knob

**DNP-MIX-FADE-4U**

Four channel moving fader audio mixer

**DNP-NSM-LIC**

File system and database license per NewsEdit SAN attached platform

**DVE and FX Options****DNP-CC**

Color-correction option

**DNP-2D DVE**

2D DVE plus color correction

**Tilting Options****DNP-TITLING-CHY**

Basic Chyron titling for NewsEdit

**DNP-TITLING-CHADV**

Advanced Chyron titling for NewsEdit with template tool

## Customer Service Commitment

The Thomson Broadcast & Media Solutions Service Team delivers complete service solutions that enhance our line of Grass Valley products. Let our experienced professional staff help you build a state-of-the-art network and deliver the best content possible for your advertisers and viewers.

Our suite of SupportPRO Services provides support throughout the product life cycles:

- Networking and consulting services
- StartPRO and on-site support
- Preventative maintenance packages
- Training and educational programs
- Technical support services and centers
- Parts, kits and repair services
- Support agreement
  - TechPRO all-inclusive package with software, hardware and on-site support coverage
  - ServicePRO semi-inclusive with software and part coverage
  - PartsPRO with advance exchange of parts only
- Software and documentation

For more information contact Service Sales in your region or visit us online at [www.thomsongrassvalley.com/support](http://www.thomsongrassvalley.com/support).

## Headquarters

**Thomson Worldwide Headquarters**

17 rue du Petit Albi – BP 8244  
95801 Cergy Pontoise Cedex  
FRANCE

[www.thomsongrassvalley.com](http://www.thomsongrassvalley.com)

DNP-2022-2

© Copyright 2004 Thomson Broadcast and Media Solutions, Inc. All rights reserved. Printed in USA. Profile is a registered trademark and FeedClip, Grass Valley, NewsBrowse, NewsEdit, NewsQ, and NewsShare are trademarks of Thomson Broadcast and Media Solutions, Inc. All other tradenames referenced are service marks, trademarks, or registered trademarks of their respective companies. Specifications subject to change without notice.

**Servers and Digital News Production Solutions**

15655 SW Greystone Court  
Beaverton, OR 97006  
U.S.A.

## Sales and Technical Support Numbers

**North America**

Sales/Support +1 800 547 8949  
+1 530 478 4148  
Fax +1 530 478 3347

**Latin America**

Sales +1 305 477 5488  
Support +1 530 478 4148  
Fax +1 305 477 5385

**Pacific**

Sales +852 2531 3000  
Support +852 2531 3056  
Fax +852 2802 2996

**Rest of the World**

Sales +33 (0) 1 34 20 70 00  
Support +800 80 80 20 20  
(West/North Europe only)  
+33 (0) 1 48 25 20 20  
(East Europe, Middle East, Africa)  
Fax +33 (0) 1 34 20 70 47