



# Pro Tools Avid® Interplay™ Guide

Version 7.4



## Legal Notices

This guide is copyrighted ©2007 by Digidesign, a division of Avid Technology, Inc. (hereafter "Digidesign"), with all rights reserved. Under copyright laws, this guide may not be duplicated in whole or in part without the written consent of Digidesign.

003, 003 Rack, 96 I/O, 96i I/O, 192 Digital I/O, 192 I/O, 888|24 I/O, 882|20 I/O, 1622 I/O, 24-Bit ADAT Bridge I/O, AudioSuite, Avid, Avid DNA, Avid Mojo, Avid Unity, Avid Unity ISIS, Avid Unity MediaNetwork, Avid Xpress, AVoption, AVoption|V10, Beat Detective, Bruno, Command|8, Control|24, D-Command, D-Control, D-Fi, D-fx, D-Show, DAE, Digi 002, Digi 002 Rack, DigiBase, DigiDelivery, Digidesign, Digidesign Audio Engine, Digidesign Intelligent Noise Reduction, Digidesign TDM Bus, DigiDrive, DigiRack, DigiTest, DigiTranslator, DINR, DV Toolkit, EditPack, Impact, Interplay, M-Audio, MachineControl, Maxim, Mbox, MediaComposer, MIDI I/O, MIX, MultiShell, OMF, OMF Interchange, PRE, ProControl, Pro Tools M-Powered, Pro Tools, Pro Tools|HD, Pro Tools LE, QuickPunch, Reel Tape, Reso, Reverb One, ReVibe, RTAS, Smack!, SoundReplacer, Sound Designer II, Strike, Structure, SYNC HD, SYNC I/O, Synchronic, TL Space, Velvet, and X-Form are trademarks or registered trademarks of Digidesign and/or Avid Technology, Inc. All other trademarks are the property of their respective owners.

Product features, specifications, system requirements, and availability are subject to change without notice.

PN 9329-56835-00 REV A 7/07

Comments or suggestions regarding our documentation?  
email: [techpubs@digidesign.com](mailto:techpubs@digidesign.com)

# contents

<b>Chapter 1. Introduction</b> .....	1
Avid Interplay Capabilities .....	1
Pro Tools Interplay Option .....	1
Overview of Avid Interplay Components .....	2
System Requirements .....	2
About Avid Interplay Guides .....	3
Support for Avid Interplay and Pro Tools Interplay Option .....	3
Interplay Access for Avid Editing Applications .....	3
Conventions Used in This Guide .....	4
About <a href="http://www.digidesign.com">www.digidesign.com</a> .....	4
<b>Chapter 2. Installing Pro Tools with Avid Interplay Support</b> .....	5
Overview of Setting Up Interplay for Checking In from Pro Tools .....	5
About the Pro Tools Check-In Folder .....	7
Configuring the Interplay Administrator Export and Import Plug-Ins .....	8
<b>Chapter 3. Avid Interplay Workflows for Pro Tools and Avid Editing Applications</b> ..	11
Switching the Project Type for HD Projects .....	12
Checking In a Sequence to Interplay for Pro Tools .....	12
Importing a Sequence into Pro Tools from Interplay .....	15
Exporting Edited Audio Tracks to Interplay from Pro Tools .....	18
Importing Pro Tools Audio Files Back into the Avid Editing Application .....	19
Exporting a Sequence from Avid Interplay Access as an AAF Sequence to Any Volume .....	22
Version Control Between the Avid Video Editor and Pro Tools Editor .....	22



# chapter 1

## Introduction

This guide describes how to use the Avid® Interplay™ system to pass sequences and audio files back and forth between Avid video editing systems and Pro Tools® audio editing and mixing systems.

---

### Avid Interplay Capabilities

Avid Interplay is an asset management system that lets Avid editors and Pro Tools editors at a single facility manage and work with the same media, as follows:

- Perform workflows on the same video media sequentially or simultaneously.
- Choose from multiple workflows for sharing files.
- Monitor, manage, and track video sequences.
- Revert to previous versions of sequences.
- View and manage past history on individual sequences.

---

### Pro Tools Interplay Option

With the Pro Tools Interplay Option installed, Pro Tools editors can interact directly with the Avid Interplay asset management system to:

- Check out sequences.
- Edit and mix within a Pro Tools session.
- Export the session and any new media back to the sequence on Interplay.

You can also use the Interplay Access and Interplay Administrator applications to manage and share files directly with an Avid editor.


---

## Overview of Avid Interplay Components

This guide addresses working with Pro Tools HD within an Avid Interplay system (or workgroup) comprising the following components:

- An Avid Unity MediaNetwork™ or Unity ISIS™ storage server (where all the media is stored)
- An Avid Interplay server, referred to hereafter as *Interplay* (which manages the metadata stored on the Unity storage server)
- The following Interplay applications (which let users interact directly with Interplay):
  - Interplay Access
  - Interplay Administrator
- The following software applications (which let users check in sequences to or check out sequences from Interplay):
  - Pro Tools HD with the Pro Tools Interplay Option
  - An Interplay-compatible Avid editing application

See Chapter 3, “Avid Interplay Workflows for Pro Tools and Avid Editing Applications” for a detailed diagram of the Avid Interplay environment described in this guide.

 *For detailed information on setting up the components of an Avid Interplay environment not addressed in this guide, contact an Interplay administrator.*

## Avid Unity MediaNetwork and Unity ISIS Storage Systems

Avid Unity MediaNetwork provides high-speed fibre channel-based network storage systems for Avid and Pro Tools workstations.

Avid Unity ISIS provides high-speed gigabit ethernet-based network storage systems for Avid workstations.

---

## System Requirements

Using the Pro Tools Interplay Option requires the following;

- Windows XP
- Pro Tools HD
- Avid editing applications supported by Avid Interplay 1.0.3 and higher
- Direct connection to an Avid Unity MediaNetwork server
- Avid Interplay Installer DVD
- Configured Avid Unity ISIS or Unity MediaNetwork client

For complete system requirements, visit the Digidesign website ([www.digidesign.com](http://www.digidesign.com)) and the Avid website ([www.avid.com](http://www.avid.com)).

## Compatibility Information

Digidesign can only assure compatibility and provide support for hardware and software it has tested and approved.

For a list of Digidesign-qualified computers, operating systems, hard drives, and third-party devices, visit the Digidesign website ([www.digidesign.com](http://www.digidesign.com)).

---

## About Avid Interplay Guides

PDF versions of Avid Read Mes are installed automatically with Avid Interplay software. Also, searchable online help files containing the same information are accessible from the Help menus in the Interplay Access and Interplay Administrator applications.

You can use any of the following guides as supplementary information for this guide.

- *Avid Interplay Best Practices Guide* contains an overview of Avid Interplay as well as task-oriented instructions, conceptual information, and reference material needed to use the Avid Interplay system. It is intended for all Interplay users, from beginning to advanced.
- *Avid Interplay Software Installation and Configuration Guide* explains overview installation and configuration information for the Interplay components on the Avid Interplay Installer DVD. It is intended for Interplay administrators who are upgrading or setting up an Avid Interplay system from scratch.
- *Avid Interplay Access User's Guide* contains a conceptual introduction to help users get started, as well as detailed explanations about screen views, commands, and processes. It is intended for all Avid Interplay end users who need to import, find, and access master clips, sequences, and other assets in the Avid Unity MediaNetwork or Avid Unity ISIS environment in their daily work.
- *Avid Interplay Engine and Avid Interplay Access Administration Guide* explains how to install, configure, and maintain an Avid Interplay system (server and clients, and all related system connections and user rights). It is intended for all Avid Interplay administrators who are responsible for these tasks.

These guides and other Interplay guides are available on the Avid Interplay Online Library DVD and on the Avid Knowledge Base (<http://www.avid.com/onlinesupport>). To view or print PDF guides, you can use Adobe Reader.

---

## Support for Avid Interplay and Pro Tools Interplay Option

For support on Avid Interplay or the Pro Tools Interplay Option, visit Avid's online Knowledge Base ([www.avid.com/onlinesupport](http://www.avid.com/onlinesupport)). Online services are available 24 hours per day, 7 days per week. Search this online Knowledge Base to find answers, to view error messages, to access troubleshooting tips, to download updates, and to read or join online message-board discussions.

For support on Pro Tools HD, see "About [www.digidesign.com](http://www.digidesign.com)" on page 4.

---

## Interplay Access for Avid Editing Applications

For detailed information on configuring an Avid editing application (such as Media Composer) for use with an Avid Interplay environment, see the *Avid Interplay Best Practices Guide*.


---


## Conventions Used in This Guide


All Digidesign guides use the following conventions to indicate menu choices and key commands:


Convention	Action
File > Save	Choose Save from the File menu
Control+N	Hold down the Control key and press the N key
Control-click	Hold down the Control key and click the mouse button
Right-click	Click with the right mouse button

The following symbols are used to highlight important information:

 *User Tips are helpful hints for getting the most from your Pro Tools system.*

 *Important Notices include information that could affect your Pro Tools session data or the performance of your Pro Tools system.*

 *Shortcuts show you useful keyboard or mouse shortcuts.*

 *Cross References point to related sections in this guide or other Pro Tools Guides.*

---

## About www.digidesign.com

The Digidesign website ([www.digidesign.com](http://www.digidesign.com)) is your best online source for information to help you get the most out of your Pro Tools systems. The following are just a few of the services and features available.

**Support** Contact Digidesign Technical Support or Customer Service; download software updates and the latest online manuals; browse the compatibility information for system requirements; search the online Answerbase or join the worldwide Pro Tools community on the Digidesign User Conference.

**Training and Education** Study on your own using courses available online or find out how you can learn in a classroom setting at a certified Pro Tools training center.


**Products and Developers** Learn about Digidesign products; download demo software or learn about our Development Partners and their plugins, applications, and hardware.

**News and Events** Get the latest news from Digidesign or sign up for a Pro Tools demo.

To learn more about these and other resources available from Digidesign, visit the Digidesign website ([www.digidesign.com](http://www.digidesign.com)).

# Installing Pro Tools with Avid Interplay Support

This chapter describes installing and configuring Avid Interplay applications and settings for use with Pro Tools.

 For detailed information on installing Avid Interplay applications and configuring settings for Avid editing applications, see your Avid Interplay documentation.

---

## Overview of Setting Up Interplay for Checking In from Pro Tools

Installing Pro Tools with Avid Interplay support involves these steps, which are necessary to follow in the exact order listed here:


- 1 Install Pro Tools: See the *HD Getting Started Guide*.
- 2 Install Interplay Access on your Pro Tools system. After Interplay Access has successfully installed, install the Pro Tools Interplay Option on your Pro Tools system: See “Installing Interplay Access and the Pro Tools Interplay Option on a Pro Tools System” on page 5.

- 3 Optional: Use Interplay Administrator (installed with Interplay Access) to configure plugin settings for Avid sequence exporting and Pro Tools importing. See “Configuring the Interplay Administrator Export and Import Plug-Ins” on page 8.

The Interplay Access and Pro Tools Interplay Option installers are available on the Avid Interplay Installer DVD. For more information, see the *Avid Interplay Software Installation and Configuration Guide*.

## Installing Interplay Access and the Pro Tools Interplay Option on a Pro Tools System

This section describes how to install Avid Interplay Access and the Pro Tools Interplay Option on a Pro Tools system.

 You must reinstall the Pro Tools Interplay Option each time you update Pro Tools. See “Reinstalling the Pro Tools Interplay Option on Subsequent Updates to Pro Tools” on page 7.

**To install Interplay Access and the Pro Tools Interplay Option on a Pro Tools system:**

- 1 Insert the Interplay Installer DVD.

2 Locate and double-click the Launch.exe installer.

The Main Menu window appears.



*Interplay installer Main Menu window*

3 Click Clients.

The Interplay Install Client Support window appears.



*Interplay Install Client Support window*

4 Click Install Pro Tools Interplay Client.


The Interplay Install Pro Tools Interplay Client window appears.




*Interplay Install Pro Tools Interplay Client window*

5 Install the following components on your Pro Tools system.


**Avid Interplay Access** Installs the Interplay Access and Interplay Administrator applications.

 *You must install Interplay Access before installing the Pro Tools Interplay Option.*

 *See the Avid Interplay Software Installation and Configuration Guide for detailed information.*

**Pro Tools Interplay Option** Does the following:

- Copies ProToolsInterplayOption.dll to the Pro Tools install folder.
- and –
- Installs two plug-ins—Editor Export Settings for Pro Tools and Pro Tools Import Settings—to the Interplay Administrator application.

 *You can also install the Pro Tools Interplay Option on any computer within the Interplay system. This is useful if you want to allow another Interplay administrator (such as an Avid editor) to configure Pro Tools import and export settings.*

6 When you are finished with your installations, click Exit to leave the Installer.

The next time you launch Pro Tools, the following menu options are available:

- File > Import > Sequence from Avid Interplay
- File > Export > Selected Tracks to Sequence in Avid Interplay

## Reinstalling the Pro Tools Interplay Option on Subsequent Updates to Pro Tools

The Pro Tools Interplay Option is not retained when you update to the next version of Pro Tools. The next time you update Pro Tools, you must reinstall this option.

---

## About the Pro Tools Check-In Folder

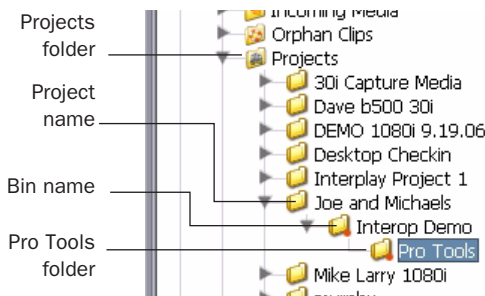
By default, the folder structure on the Interplay database matches the folder structure within the Avid editing application. When an Avid editor checks in a sequence to Interplay for Pro Tools, the Interplay database stores two separate versions of the sequence:

- The original sequence (compatible only with Avid editing applications) is stored at the following location:

Projects\*project\_name*\bin\_*name*

- A special version of the sequence (known as the *Pro Tools sequence*) is stored in a sub-folder called *Pro Tools* at the following location:

Projects\*project\_name*\bin\_*name*\Pro Tools

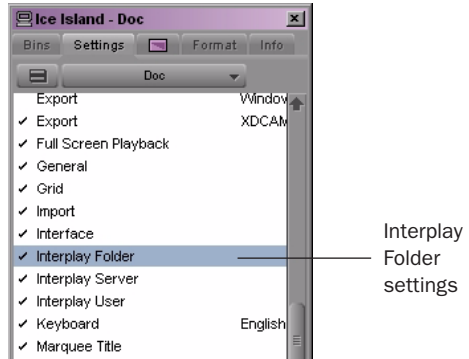


**Avid Interplay Access folder structure**

The Pro Tools editor will later check out the version of the sequence residing in the Pro Tools folder.

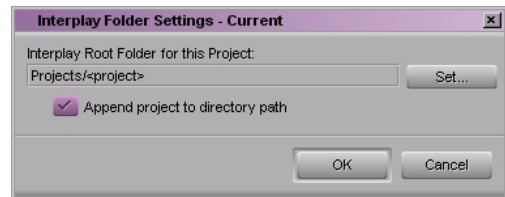
## Defining the Check-In Destination Folder

The Avid editing application selects a check-in destination folder according to its Interplay Folder settings.



**Project window (Avid editing application)**

The Avid editor can use the default settings or change them by opening the Interplay Folder Settings dialog from the Project window.



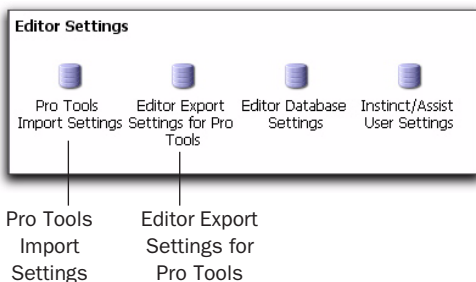
**Interplay Folder Settings dialog**

## Configuring the Interplay Administrator Export and Import Plug-Ins

The Pro Tools Interplay Option installer adds the following plug-ins to the Interplay Administrator application:

- Editor Export Settings for Pro Tools
- Pro Tools Import Settings

Configuring these plug-ins is not required, but doing so lets you establish a “template” of settings that are automatically applied to sequences that are either exported from an Avid editing application or imported into Pro Tools.



*Plug-ins in the Interplay Administrator application*

## Configuring Editor Export Settings for Pro Tools

The Editor Export Settings for Pro Tools plug-in establishes default settings for the Avid editing application to use when exporting a sequence to Interplay for Pro Tools.

An Avid editor (or Interplay administrator) can:

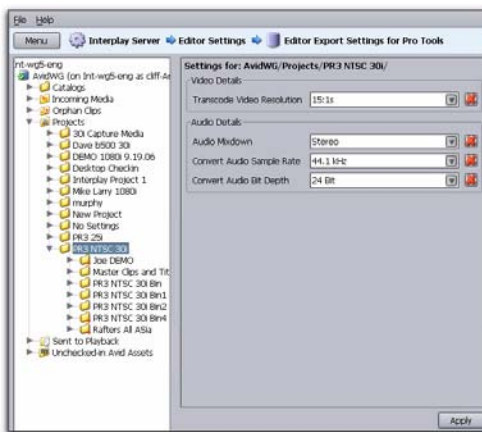
- Configure the Editor Export Settings for Pro Tools plug-ins before exporting a sequence from the Avid editing system.
  - or –
- Wait until they begin the export process (at which point the Avid editing application will prompt for export settings).

The Avid editor can establish export settings for the entire database or for particular folders. Settings are automatically inherited from the parent folder or project, but can be explicitly modified by folder.

### To configure the Editor Export Settings for Pro Tools:

- 1 In the Interplay Administrator window, double-click the Editor Export Settings for Pro Tools plug-in to open it.

The following illustration shows the settings for a project folder named “PR3 NTSC 30i.” Subfolders inherit settings. You can modify the settings for any folder in the hierarchy.




*Editor Export Settings for Pro Tools*

## Video Details

**Transcode Video Resolution** The Avid editing application uses this setting to perform a video mixdown when the Video Mixdown option is selected after the sequence is checked in to Interplay for Pro Tools.

The application might also use the setting when you perform a “link to existing media” export.

 For more information, see “Checking In a Sequence to Interplay for Pro Tools” on page 12.

## Audio Details


**Audio Mixdown** Specifies whether to include an audio mixdown with each export. Available options are No Mixdown, Stereo, and Mono.

**Convert Audio Sample Rate** Specifies the audio sample rate for the export. The Project option refers to the current audio sample rate setting used in the original Avid project.

**Convert Audio Bit Depth** Specifies the audio bit depth for the export. The Project option refers to the current audio bit depth setting used in the original Avid project. (Dither will automatically be applied to any audio with a converted bit depth.)

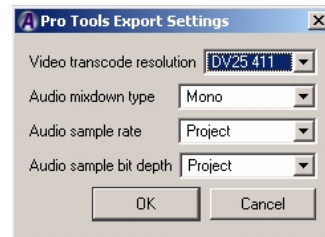
2 Click Apply.

3 Click the Menu button to return to the Administrator window.

 Changes take effect for the Avid editing application the next time the editor logs into the Interplay Window. The editor may have to log out of the Interplay Window and log back in.

## If Editor Export Settings for Pro Tools Are Not Configured


If the Editor Export Settings for the Pro Tools plug-in is not configured for a particular folder, the Avid editing application displays the Pro Tools Export Settings dialog when a sequence is checked into Interplay for Pro Tools. The Avid editor can specify the settings for that particular export in the dialog.



*Pro Tools Export Settings dialog*

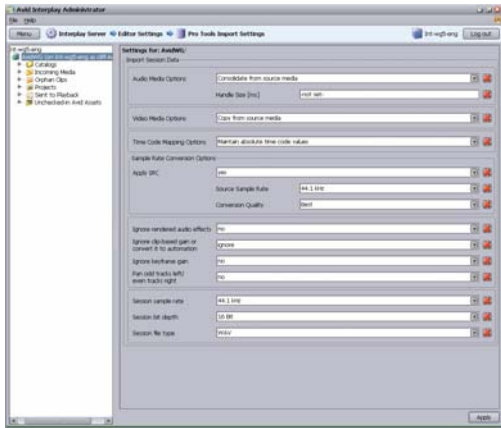
## Configuring Pro Tools Import Settings

The Pro Tools Import Settings plug-in establishes default settings for Pro Tools to use when importing a sequence from Interplay. These settings correspond directly to the settings used by Pro Tools in the Import Session Data and the New Session dialogs.

 See the Pro Tools Reference Guide for detailed information on the Import Session Data and New Session dialogs.

## To configure the Pro Tools Import Settings:

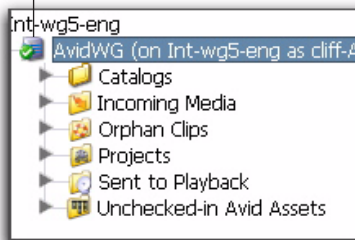
1 In the Interplay Administrator window, double-click the Pro Tools Import Settings plug-in to open it.



Pro Tools Import Settings (entire view)

Settings are automatically inherited from the parent folder or project, but can be explicitly modified by folder. You can also select an individual folder and set specific values for that folder and its subfolders.

Settings configured for the entire database



Pro Tools Import Settings (folder list)

**A** If an administrator did not enter any settings in the Pro Tools folder or any parent folder in the hierarchy, the Pro Tools editor can modify those settings in the New Session or Import Session Data dialogs during the import into Pro Tools.

## chapter 3

# Avid Interplay Workflows for Pro Tools and Avid Editing Applications

Workflows for using Interplay to pass a sequence between an Avid editing application and Pro Tools involve the following steps:

- 1 If the Avid project is in an HD resolution, the Avid editor switches the Project Type to an SD resolution.
- 2 The Avid editor checks in a sequence to Interplay for Pro Tools.
- 3 The Pro Tools editor imports a sequence from Interplay.
- 4 The Pro Tools editor exports edited and mixed audio tracks back to the sequence residing on the Interplay server.
- 5 The Avid editor imports audio tracks back into the Avid editing application.

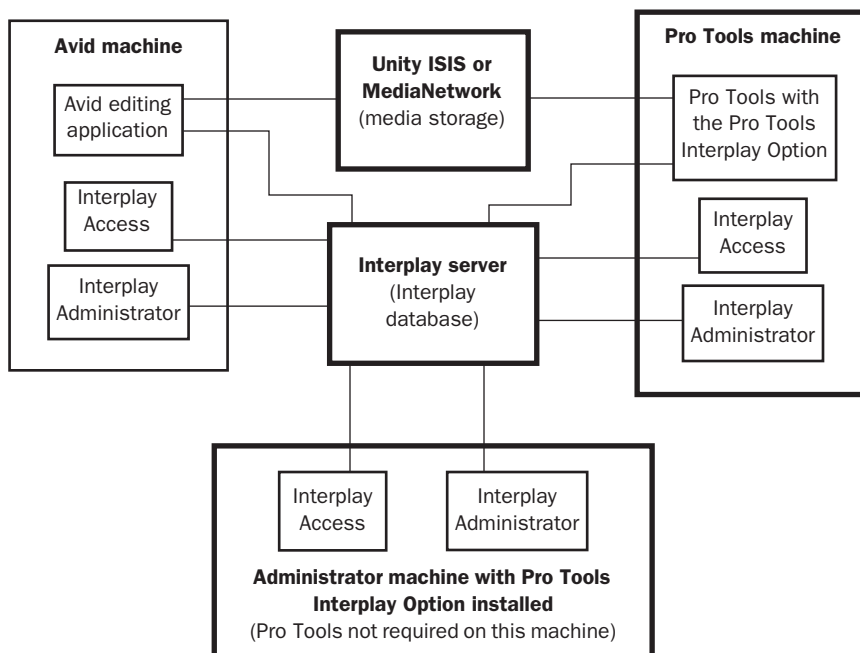


Figure 1. Diagram of Avid Interplay system

## Switching the Project Type for HD Projects

Pro Tools HD with an Avid video peripheral can import and display editing metadata from HD Avid video, but cannot play back or display HD video frames. For this reason, sequences exported from Avid HD projects should also include a video mixdown in an SD resolution corresponding to the original HD resolution. Changing the resolution of the video mixdown involves changing the project's Format type.

### To change an HD project's Project Type:

- 1 Open the Project in the Avid editing application.
- 2 In the Project window, click the Format tab.
- 3 Choose a corresponding SD resolution from the Project Type pop-up menu. For example, in an NTSC 1080i/59.94 project, switch to a 30i format and in a PAL 1080i/50 project, switch to a 25 format.



Project window, Format tab

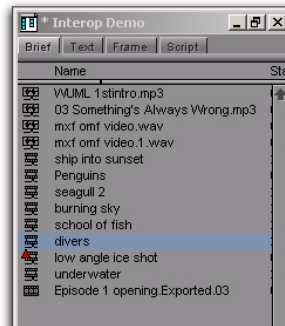
**⚠** Only audio files can be exported from 720p projects. Because 720p projects have no corresponding SD resolution, video files cannot be exported from them.

## Checking In a Sequence to Interplay for Pro Tools

This section describes how to use an Avid editing application to check in a sequence to Interplay for Pro Tools.

### To check in a sequence to Interplay for Pro Tools:

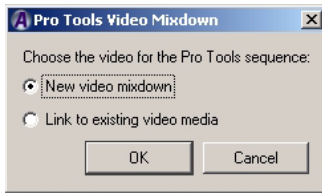
- 1 Navigate to the bin containing the sequence you want to export.




Bin containing the sequence to export

- 2 Do one of the following:
  - Select the sequence, and choose File > Check In to Interplay for Pro Tools.
  - OR –
  - Right-click the sequence, and choose Check In to Interplay for Pro Tools.

If you have previously set the Editor Export Settings for Pro Tools for the folder, the Pro Tools Video Mixdown dialog appears.



*Video Mix dialog*

 See “Configuring Editor Export Settings for Pro Tools” on page 8 for information.

3 Select one of the following options:

**New Video Mixdown** Includes a video mixdown in the exported sequence using the resolution set in the Project Type pop-up menu of the project window’s Format tab. This option should be selected if the Avid editor is working on an HD project. No video effects will be rendered in the project.

**Link to Existing Video Media** Use this option when effects have either been rendered or are unnecessary for the Pro Tools editor. (Ensure that linked video can be played from the Pro Tools system.) With this option, the Avid editing application:

- Does not render any effects.
- Determines whether the current resolution matches the Transcode resolution in the Editor Export Settings for Pro Tools plug-in in the Interplay Administrator. Depending on whether the settings match, one of the following occurs:
  - If the settings either match or have not been created for the check-in folder, the system creates a sequence that links to the existing media and does not create a video mixdown or render any video effects.


- If the settings do not match, the system transcodes the sequence according to the setting in the Export Settings for Pro Tools plug-in and links the sequence to this new media. The system also renders (or re-renders) all video effects to match the transcode resolution. The application overrides the “Link To” option in order to guarantee that the Pro Tools editor has access to a resolution that is supported by Pro Tools.

4 Click OK to check in the sequence to Interplay for Pro Tools.

## After Checking In a Sequence to Interplay for Pro Tools


The system exports the sequence from the Avid editing application, and then checks in the sequence to Interplay.

If the Interplay folder containing the exported sequence has been configured with video and audio settings defined in the Editor Export Settings for Pro Tools plug-in, those settings are applied to the sequence. (These settings can apply to either the entire database or to one or more folders, depending on how they are configured.)

 See “Configuring Editor Export Settings for Pro Tools” on page 8.

When an Avid editor checks in a sequence to Interplay for Pro Tools, the system chooses a destination folder in the Interplay database based on the current Interplay view settings, with the default destination folder as follows:

Projects\project\_name\bin\_name

 For more information, see “About the Pro Tools Check-In Folder” on page 7.

If your check-in destination folder is a folder for which settings have not been defined, the system displays the Pro Tools Export Settings dialog so the Avid editor can specify the settings.

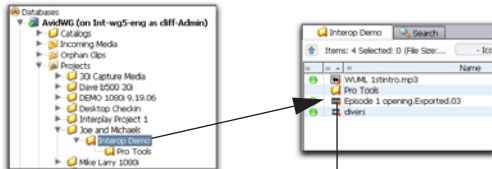


**Pro Tools Export Settings dialog**

## Exported Files in Interplay

If this is the first time the Avid editor has checked in a sequence to Interplay for Pro Tools for this project, the system performs the following operations:

- Checks in the Avid sequence to the *bin\_name* folder.
- Creates a Pro Tools folder within the *bin\_name* folder.
- Checks in the files for the Pro Tools editor to the Pro Tools folder.
- Checks in a Pro Tools sequence to the Pro Tools folder.



The name matches the name in the Avid editing application bin

**Location of the Avid sequence and its associated Pro Tools directory**

The first time the sequence is exported, the system appends the text “\_v1\_forPT” to the sequence name in the Pro Tools folder. Each subsequent time the sequence is exported, it uses the text “\_v2\_forPT,” “\_v3\_forPT,” and so on.

The following illustration shows the contents of the Pro Tools directory after the first export.



Red dots “\_v1\_forPT” appended to the sequence name

**Contents of Pro Tools directory (left pane) and sequence listed in that directory (right pane)**



The red dots in the illustration indicate that the system has placed a reservation on the files to prevent unauthorized deletion for a fixed period of time. For more information, see the Avid Interplay Access User’s Guide.

## Importing a Sequence into Pro Tools from Interplay

This section describes how to locate a sequence on the Interplay database and import it into Pro Tools. This section assumes that you have already configured the Pro Tools Import settings in the Interplay Administration tool.

 For more information, see “Configuring Pro Tools Import Settings” on page 9.

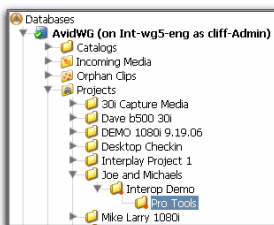
If you do not establish Pro Tools Import Settings before importing the sequence into Pro Tools, you can select the appropriate values in the Import Session Data dialog during the import process.

When importing a sequence from Interplay into Pro Tools, you can import into a new or existing session.

## Importing a Sequence into Pro Tools from within Interplay

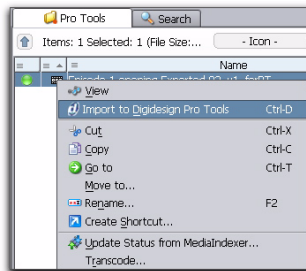
**To check out the sequence and import it into Pro Tools from within Avid Interplay Access:**

- 1 Start Avid Interplay Access.
- 2 Navigate to the Pro Tools folder containing the sequence you want to import.



*Navigating to the sequence*

- 3 Right-click the sequence, and choose Import to Digidesign Pro Tools.




### Importing a sequence into Pro Tools from within Access

If Pro Tools is not already running, it automatically launches.

## Importing a Sequence from Interplay from within Pro Tools

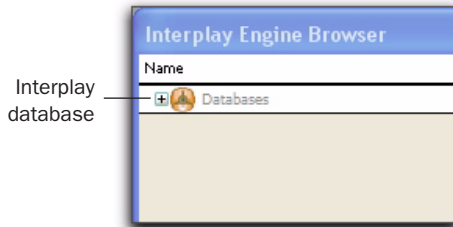
This section describes how to use Pro Tools to import a sequence from Interplay. If you have not yet opened Interplay Access and specified a server to connect to, you must do that before performing this procedure.

 See “Importing a Sequence into Pro Tools from within Interplay” on page 15 for detailed information.

**To check out the sequence and import it into Pro Tools from within Pro Tools:**

- 1 Start Pro Tools.
- 2 If you want to import the sequence into an existing session, open that session.
- 3 Choose File > Import > Sequence from Avid Interplay.

The Interplay Engine Browser appears.

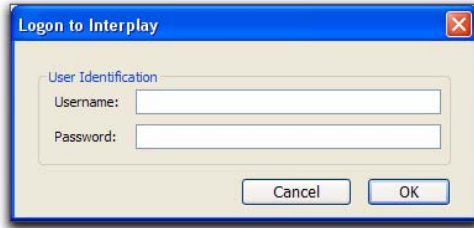


**Interplay Engine Browser**

- 4 In the Interplay Engine Browser, expand the Interplay database by clicking the plus sign (+) next to it.
  - 5 Expand the root folder of the database—usually titled *AvidWG* or a variation thereof—by clicking the plus sign (+) next to its name.
- 💡 *The folder structure matches the structure in Interplay Access.*
- 6 Expand the Projects folder.
  - 7 Expand the project containing the sequence you want to check out and import to Pro Tools.

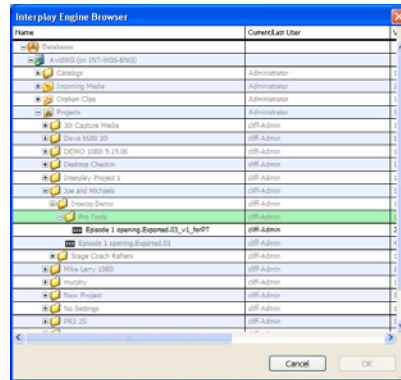
The Logon to Interplay dialog appears.

- 8 Enter your username and password, and click OK.



**Logon to Interplay dialog**

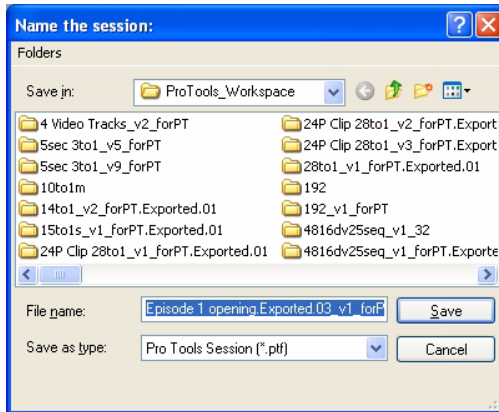
- 9 In the Interplay Engine Browser, locate and select the sequence that you want to import.




**Interplay Engine Browser (folder structure displayed)**

- 💡 *Files that appear in greyed out text are not available for import into Pro Tools.*
- 10 Click OK.

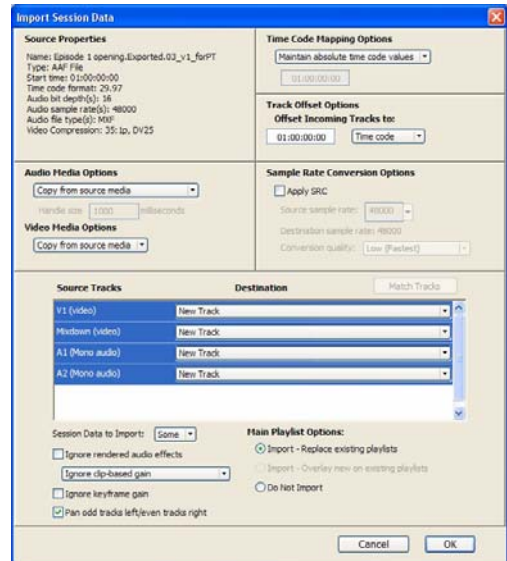
**11** If the Name the Session dialog appears, navigate to the appropriate location either on local storage or on a dedicated Unity workspace, and click Save.




Name the Session dialog

 This dialog does not appear if you are importing a sequence into an existing session.


**12** If the Pro Tools Import Session Data dialog appears, select the appropriate options and click OK.

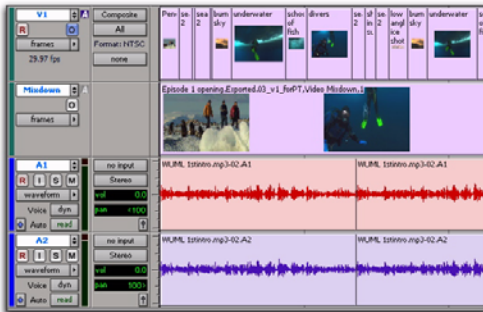


Import Session Data dialog

 This dialog does not appear if you configured the Pro Tools Import Settings in the Avid Interplay Administrator. Pro Tools automatically uses those settings to import the sequence. (See “Configuring Pro Tools Import Settings” on page 9 for detailed information on configuring Pro Tools Import Settings, and the DigiTranslator Guide for detailed information on setting options in this dialog.)

Pro Tools imports the sequence, copies any media (if the settings require copying), and displays the imported sequence within the Pro Tools session.


 *If the sequence was linked to media files on unmounted volumes, the system provides a warning and asks you to mount those volumes before you proceed with copying or linking to media.*




**Sequence imported from Interplay into the Timeline**

## Exporting Edited Audio Tracks to Interplay from Pro Tools

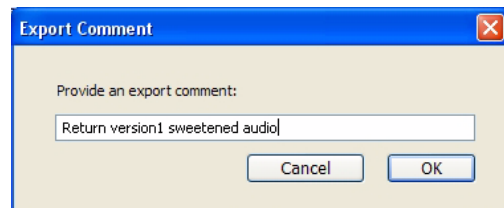
After you edit the audio material from the sequence, you can export the audio tracks back into the sequence in Interplay.

 *Only audio tracks that originated as part of a sequence on Interplay may be exported back into Interplay.*

 *It is recommended that you provide completed audio stems rather than audio tracks with edits.*

**To export audio tracks from Pro Tools, and then check in audio tracks to Interplay:**

- 1 In Pro Tools, select the tracks that you want to export into the Pro Tools sequence on Interplay.
- 2 Select File > Export > Selected Tracks to Sequence in Avid Interplay.
- 3 In the Export Comment dialog, type a comment and click OK.



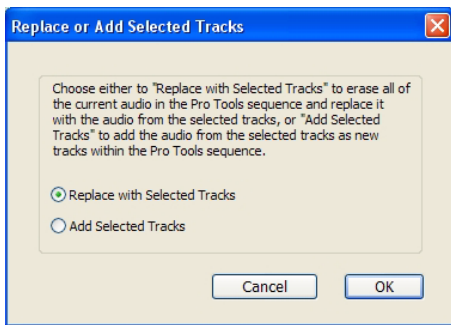
**Export Comment dialog**

- 4 In the Replace or Add Selected Tracks dialog, select a method for laying back edited audio material into the Pro Tools sequence residing on the Interplay server:

**Replace with Selected Tracks** Replaces the old audio tracks in the Pro Tools sequence with the edited audio tracks. Select this option if you do not want to preserve the original audio in the sequence.

**Add Selected Tracks** Adds the edited audio tracks to the Pro Tools sequence on the Interplay database. Select this option if you want to preserve the original audio in the sequence.

**!** *When adding selected tracks, ensure that the total number of tracks in the sequence residing on the Interplay server does not exceed 24—the total allowed number of tracks for the Avid editing application. Contact the Avid editor or consult Avid documentation for information on the total number of tracks allowed.*



**Replace or Add Selected Tracks**

5 Click OK.

A confirmation message box appears.

6 Click OK.

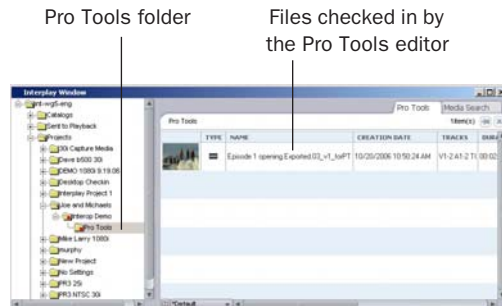
The sequence in the Avid Interplay database is now ready to be checked out and imported by the Avid editor.

## Importing Pro Tools Audio Files Back into the Avid Editing Application

After you have checked out the completed audio stems to the Pro Tools sequence on the Interplay server, the Avid editor imports the sequence back into the Avid editing application.

**To import the sequence back into the Avid editing application:**

1 In the Avid editing application, open the Interplay Window and navigate to the location of the checked in Pro Tools sequence.

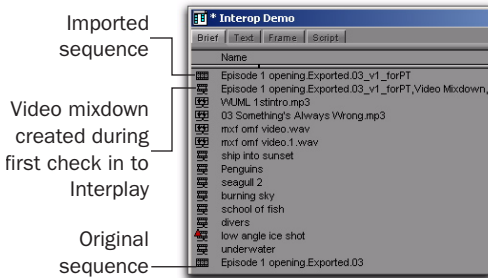


**Interplay browser**

**💡** *Depending on edits made in Pro Tools, you might see several audio files with names containing the prefix “Sample accurate edit.” For more information, see “Frame-Rate Accurate Video Editing and Sample-Rate Accurate Audio Editing” on page 20.*

2 Drag the sequence into the bin.

The Avid editing application checks out the sequence and imports it and its related files into the bin.




#### Bin after import

3 The Avid editor can do one of the following:


- Add the new audio tracks into the original sequence.
- or –
- Work with the imported sequence.

In this example, the Pro Tools audio tracks are added into the original sequence.

 *If you plan to check in the sequence to Interplay for Pro Tools again, it is simpler to import the audio into the original sequence. Every time you export a sequence for Pro Tools, the system appends the text “\_vx\_forPT,” where x is the number of times the sequence has been exported. It can become confusing if several similar text strings are appended to the name.*

4 Load the imported sequence into the Source monitor.

5 Add the audio into the original sequence using standard editing techniques.

 *For more information, see the documentation (PDF or Help file) for your Avid editing application.*

The following illustration shows the audio tracks cut into the original sequence. In this example, the original tracks are overwritten.



#### Sequence in the Avid Timeline after overwrite

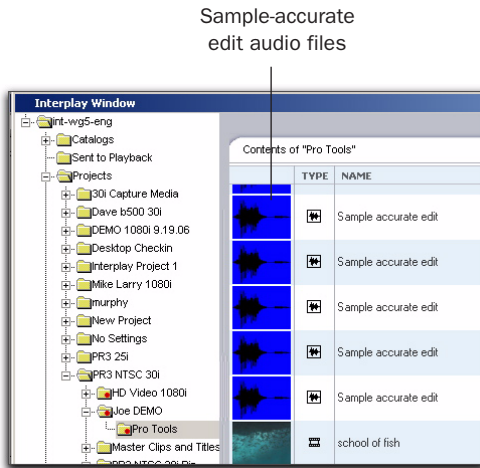
6 Now the Avid editor can make any adjustments to the sequence and do the following:

- Create a digital cut.
- Perform a Send to Payout operation.
- Check in the sequence to Interplay for Pro Tools if the Pro Tools editor needs to work on the sequence again.

## Frame-Rate Accurate Video Editing and Sample-Rate Accurate Audio Editing

After a sequence has been exported back to Interplay from Pro Tools, a number of additional media files appear in the Interplay Window and in the bin. Some have names containing the prefix *Sample accurate edit*. These are the additional media files that Pro Tools creates to make sure that the Avid editing application receives frame-accurate audio. Sample-accurate edit media files are visible if you zoom in on portions of the imported audio in the Timeline.

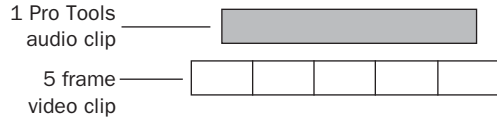
The following illustration shows Sample accurate edit files in the Interplay Window.



**Sample-accurate edits in the Interplay window**

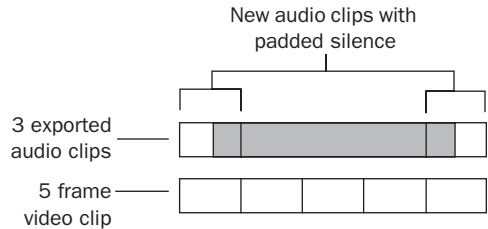
Avid video editing applications edit with frame accuracy. This means that in a 30-fps project, the Avid editor can edit at 30 different locations for every one second of video. Pro Tools edits with sample rate accuracy. In a 48 kHz session, there are potentially 48,000 locations to edit for every second of audio.

When Pro Tools exports a sequence, it must ensure that the audio media files line up on frame boundaries. To do this, it might have to split an existing audio clip into three clips. For example, the following illustration shows a 5-frame video clip and a corresponding audio clip. In Pro Tools, the audio clips might not line up on video frame boundaries.



**The original audio clip does not line up on video frame boundaries**

In order to export frame accurate audio clips, Pro Tools splits the audio media on frame boundaries and fills any gaps with silence. The following illustration shows the resulting audio clips that are exported to the Avid editing application.



**Exported audio clips line up on video frame boundaries**

To cut down on the number of sample accurate edit files, the Pro Tools editor can perform a Bounce to disk for each track (or a bus-record to an audio track) rather than exporting tracks that contain all of the audio edits.

---

## Exporting a Sequence from Avid Interplay Access as an AAF Sequence to Any Volume

This section describes how to export a sequence residing on the Interplay server as an AAF file, and save it to any volume.

This is especially useful if the Avid editor has checked in an updated version of a sequence you are already working on in Pro Tools, and you want to use a third-party re-conform tool to reconcile the edits between the different versions of that sequence within your session.

### To export a checked-in sequence as an AAF sequence:

- 1 Start Avid Interplay Access.
- 2 Navigate to the folder containing the sequence that represents the same version of the sequence you have already started working with in Pro Tools.
- 3 Right-click this original sequence, and choose Export Selected Sequence as AAF.
- 4 Navigate to a location on a volume where you want to save the sequence. This should be a volume and location easily accessible from your Pro Tools system. Click OK.
- 5 Navigate to the Access folder containing the version of the same sequence that was most recently checked in by the Avid editor.
- 6 Right-click this updated sequence, and choose Export Selected Sequence as AAF.
- 7 Navigate to the same location where you saved the original sequence, and click OK.
- 8 Use a third-party post-production re-conform tool to re-conform your Pro Tools session to the new picture edit.

---

## Version Control Between the Avid Video Editor and Pro Tools Editor

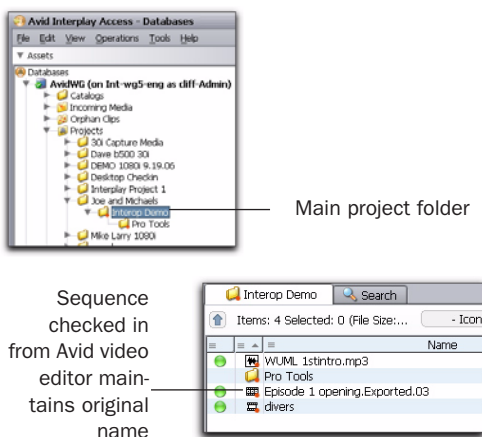
### The First Round Trip Check In

The first time an Avid editor checks in a sequence to Interplay for Pro Tools, the following occurs:

- The system checks in the sequence to the corresponding folder in Interplay (by default, the Project\project\_name\bin\_name folder).
- The system creates a Pro Tools folder in the same directory and checks in the following file to that folder:
  - *Sequence\_name\_v1\_forPT*

The Pro Tools editor checks out the sequence called *Sequence\_name\_v1\_forPT*. After the Pro Tools editor completes the audio editing, they export selected tracks back into the sequence at the same location.

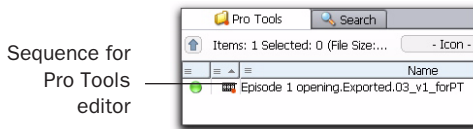
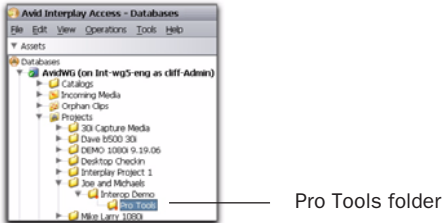
The following illustration shows the sequence in Interplay Access. The sequence name does not change when checked in to Interplay.



*Interplay Access folder list (left) and sequence (right)*

The following illustrations depict the sequence in Avid Interplay Access after the Pro Tools editor has done the following:

- Imported the Pro Tools sequence to a session inside Pro Tools
- Edited and mixed audio
- Exported selected tracks back to the Pro Tools sequence on Interplay

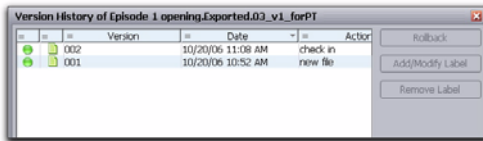


Interplay Access folder list (left) and sequence (right)

Two versions of the sequence are now available.


**To open the History window for a file in Interplay Access:**

- Right-click the sequence, and choose Version Control > History.



Version History dialog

At this point the Avid video editor can check out *sequence\_name\_v1\_forPT* and either edit the sequence directly or cut the audio back into the original sequence.

 For more information, see “Importing Pro Tools Audio Files Back into the Avid Editing Application” on page 19.

**Subsequent Check Ins from the Avid Editor and the Pro Tools Editor**

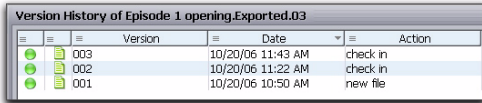
Each time the Avid editor checks in a sequence to Interplay for Pro Tools, the following occurs:

- The *sequence\_name* sequence in the corresponding bin folder in Interplay is updated with a new version. The file name does not change.
- The Avid editing system creates a new file for the Pro Tools folder and changes the *vx\_for\_PT* portion of the name.

In the following example, the Avid editor does the following:

- 1 Checks out the sequence called *sequence\_name\_v1\_forPT*, and cuts the new audio into the original sequence.
- 2 Checks in the version of the sequence with the updated audio files to Interplay without making any additional changes.
- 3 Makes additional changes to the video and checks in the sequence back to Interplay so that the Pro Tools editor can make additional audio changes.

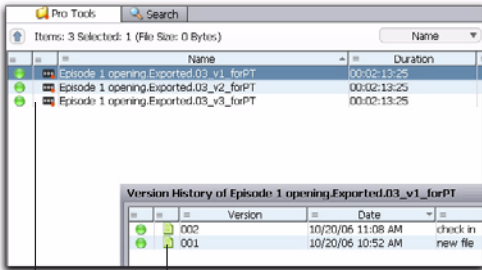
The following illustration shows the exported video sequence in Interplay Access along with a version history of the sequence. There are now three versions of the sequence in Interplay.



Version	Date	Action
003	10/20/06 11:43 AM	check in
002	10/20/06 11:22 AM	check in
001	10/20/06 10:50 AM	new file

**Version History dialog**

The following illustration shows the sequences in the Pro Tools folder after the sequence has been checked in three times by the Avid editor. The illustration also shows the version history of one of the sequences.



Two versions of the version 1 sequence checked in by the Pro Tools editor


Three Pro Tools sequences, one for each check in from the Avid video editor

**Version history of one sequence**

## Keeping Track of the Versions

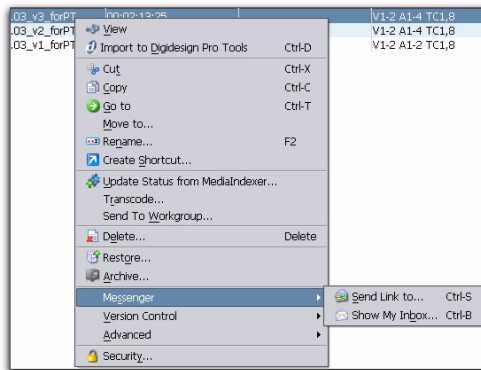
After numerous check ins and check outs (even with one sequence), it can be complicated to keep track of the individual files in the Pro Tools folder. It is important that the Avid and Pro Tools users communicate with each other regarding when files are ready and which file should be worked on next. Most of the time, you would work on the latest version.

In order to speed up communication, you can use the e-mail Messenger service available in Interplay Access.

 *Interplay Administrator can be used to enable e-mail notification for Interplay (and set up individual users to receive these notifications). For details, see the Avid Interplay Engine and Avid Interplay Access Administration Guide.*

**To send e-mail notification about a sequence:**

- 1 Launch Avid Interplay Access, and navigate to the sequence for which you want to send a notification.
- 2 Choose Messenger > Send Link To.



**Sending e-mail notification about a sequence**

The e-mail notification window appears with a link to the sequence.



**Messenger window**

**3** Fill in the information and click Send. The recipient receives an e-mail message containing a link to the file and any additional information.



[www.digidesign.com](http://www.digidesign.com)

---

**DIGIDESIGN**

2001 Junipero Serra Boulevard  
Daly City, CA 94014-3886 USA  
Tel: 650.731.6300  
Fax: 650.731.6399

**TECHNICAL SUPPORT (USA)**

Tel: 650.731.6100  
Fax: 650.731.6384

**PRODUCT INFORMATION (USA)**

Tel: 800.333.2137

**INTERNATIONAL OFFICES**

Visit the Digidesign website  
for contact information