

**SONY**<sup>®</sup>

# User Guide

Personal Computer  
VPCL11 Series



## Contents

Before Use.....	4	Using the Wireless LAN.....	82
Finding More about Your VAIO Computer .....	5	Using the Bluetooth Function .....	85
Ergonomic Considerations .....	9	Using Peripheral Devices.....	90
Getting Started.....	11	Connecting External Speakers or Headphones .....	91
Locating Controls and Ports.....	12	Connecting an External Microphone .....	92
About the Indicator Lights .....	16	Connecting a USB Device .....	93
Setting Up Your Computer.....	17	Connecting an i.LINK Device.....	95
Shutting Down Your Computer Safely .....	25	Customizing Your VAIO Computer.....	97
Using the Power Saving Mode.....	26	Setting the Password.....	98
Updating Your Computer .....	28	Using the VAIO Control Center .....	103
Using Your VAIO Computer.....	29	Upgrading Your VAIO Computer.....	104
Using the Keyboard.....	30	Adding and Removing Memory .....	105
Using the Mouse .....	36	Precautions .....	111
Using the Touch Screen.....	42	Safety Information .....	112
Using the Built-in Camera .....	46	Care and Maintenance Information .....	114
Using the Optical Disc Drive .....	47	Handling Your Computer .....	115
Using the TV Function.....	54	Handling the LCD Screen/Touch Screen .....	117
Using the HDMI/VIDEO Input Function.....	61	Using the Power Source.....	118
Using the Remote Commander.....	66	Handling the Built-in Camera.....	119
Using "Memory Stick".....	70	Handling Discs.....	120
Using Other Modules / Memory Cards.....	76	Handling "Memory Stick" .....	121
Using the Internet.....	80	Handling the Built-in Storage Device .....	122
Using the Network (LAN) .....	81		

Troubleshooting .....	123
Computer .....	125
System Security .....	131
Built-in Camera .....	132
Networking .....	134
Bluetooth Technology .....	137
Optical Discs .....	140
Display .....	144
Printing .....	146
Microphone .....	147
Mouse .....	148
Speakers .....	150
Touch Screen.....	151
Keyboard.....	152
Floppy Disks.....	153
Audio/Video.....	154
HDMI/VIDEO Input Function .....	157
"Memory Stick" .....	159
Peripherals .....	160
Trademarks.....	161
Notice.....	163

## Before Use

Congratulations on your purchase of this Sony VAIO® computer, and welcome to the on-screen User Guide. Sony has combined leading-edge technology in audio, video, computing, and communications to provide a state-of-the-art personal computing experience.



External views illustrated in this manual may look slightly different from those of your computer.



### How to find specifications

Some features, options, and supplied items may not be available on your computer.

To find out about the configuration of your computer, visit the Sony online support web site at the following URLs:

- For customers in USA  
<http://esupport.sony.com/EN/VAIO/>
- For customers in Canada  
<http://sony.ca/support/>
- For customers in Spanish-speaking Latin American countries or areas  
<http://esupport.sony.com/ES/VAIO/LA>
- For customers in Brazil  
<http://esupport.sony.com/BR/>

# Finding More about Your VAIO Computer

This section provides support information about your VAIO computer.


## 1. Printed Documentation

- ❑ **Quick Start Guide** — An overview of components connection, set-up information, etc.
- ❑ **Safety Information** — Safety guidelines and owner information.

## 2. On-screen Documentation

- ❑ **Help and Support** — General information and technical assistance for your VAIO computer.

To access **Help and Support**:

- 1 Click **Start**  and **Help and Support**.
- 2 Choose from the following categories to find the answers you need.

<b>Get started with my VAIO</b>	Get help with Internet and wireless setup, security setup, personalizing your VAIO computer, and creating recovery discs and more.
<b>Use my VAIO</b>	Access interactive help in the form of VAIO tutorials, how-to articles, the VAIO technology page, specifications, and system and software information. You can find useful documentation such as below: - <b>VAIO User Guide</b> (This manual) - <b>VAIO Recovery Center User Guide</b> - Information about restoring individual software programs, hardware drivers, and drive partition(s) or your entire built-in storage device to the original factory settings - <b>Software Information</b>
<b>Troubleshoot my VAIO</b>	Maintain and troubleshoot your VAIO computer with VAIO Care, system restore, backup and recovery, and contact Sony support.

- ❑ **Program help files** — May be included with the preinstalled software programs on your computer. You may be able to access the help files from the help menu on a specific program.
- ❑ **SmartWi™ Connection Utility Help** — Information about setting up Bluetooth®, wireless LAN, GPS, and wireless WAN functions.



Features and options may not be available on your computer.

See the specifications to find out about configuration of your computer.

To access this on-screen guide:

- 1 Click **Start, All Programs, and SmartWi Connection Utility.**
- 2 Click **SmartWi Connection Utility Help.**

### 3. Support Web Sites

#### ❑ **Sony online support web site**

The Sony online support web site provides instant access to information on commonly encountered problems. Type a description of the problem and the Knowledge Database searches for the corresponding solutions online.

- ❑ For customers in USA

<http://esupport.sony.com/EN/VAIO/>

- ❑ For customers in Canada

<http://sony.ca/support/>

- ❑ For customers in Spanish-speaking Latin American countries or areas

<http://esupport.sony.com/ES/VAIO/LA>

- ❑ For customers in Brazil

<http://esupport.sony.com/BR/>

#### ❑ **Operating system online support web site**

Your computer comes preinstalled with a Microsoft Windows operating system. For operating system support, you can visit Microsoft customer support at <http://support.microsoft.com/directory/>.

## 4. Customer Information Center

If you do not find the information you are looking for at our site, you may call Sony directly. You can find the contact numbers on the Sony online support web site. In order to receive the fastest and most efficient services, have the following information readily available:

**1** Your VAIO computer model

You can find it at the lower right corner of the display on the computer.

**2** Your computer's serial number

You can find it on the bottom, the back panel, or inside the battery compartment of your Sony VAIO computer. The serial number is the last 7 digits of the number below the barcode.

**3** The operating system on your computer

**4** The hardware component or the software program that is causing the problem

**5** A brief description of the problem

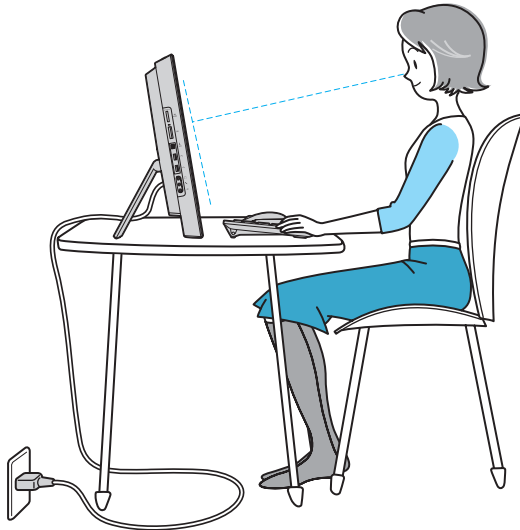
## 5. In Store Service & Support (available in USA only)

Make an appointment with a Sony certified technician at a U.S. Sony Style store and get personalized service and support for your VAIO PC. Sony Style Backstage Technicians can assist with the setup of your new VAIO PC, system optimization, data rescue, and any repair service you might need.

Visit the web site at [www.sonystyle.com/backstage](http://www.sonystyle.com/backstage) to find the nearest location.

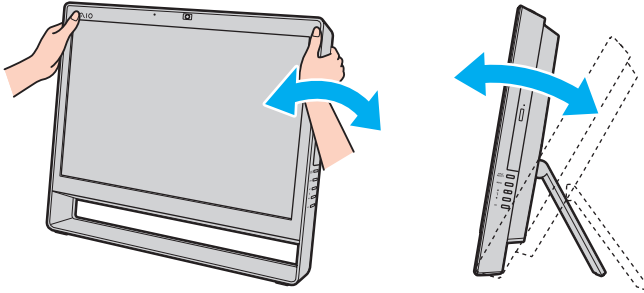
## Ergonomic Considerations

Whenever possible, you should attempt to take account of the following ergonomic considerations:



- ❑ **Position of your computer** – Place the display directly in front of you. Keep your forearms horizontal, with your wrists in a neutral, comfortable position while using the keyboard or the pointing device. Let your upper arms hang naturally at your sides. Take frequent breaks while using your computer. Excessive use of the computer may strain eyes, muscles, or tendons.
- ❑ **Furniture and posture** – Sit in a chair with good back support. Adjust the level of the chair so your feet are flat on the floor. A footrest may make you more comfortable. Sit in a relaxed, upright posture and avoid slouching forward or leaning far backwards.

- ❑ **Viewing angle of the display** – Use the display's tilting feature to find the best position. You can reduce eye strain and muscle fatigue by adjusting the tilt of the display to the proper position. Adjust the brightness level of the display as well.



! While adjusting the viewing angle, do not exert excessive pressure on your computer to eliminate a risk of mechanical damage.

- ❑ **Lighting** – Choose a location where windows and lights do not cause glare and reflection on the display. Use indirect lighting to avoid bright spots on the display. Proper lighting adds to your comfort and work efficiency.
- ❑ **Ventilation** – Make sure you leave at least 4 inches (10 cm) of space behind and at least 8 inches (20 cm) of space on each side of the main unit.

# Getting Started

This section describes how to get started using your VAIO computer.

**!** Before starting your computer for the first time, do not connect any other hardware that did not originally come with your computer. Upon completion, connect one device (for example, a printer, an external hard disk drive, a scanner, and so on) at a time, following the manufacturer's instructions.

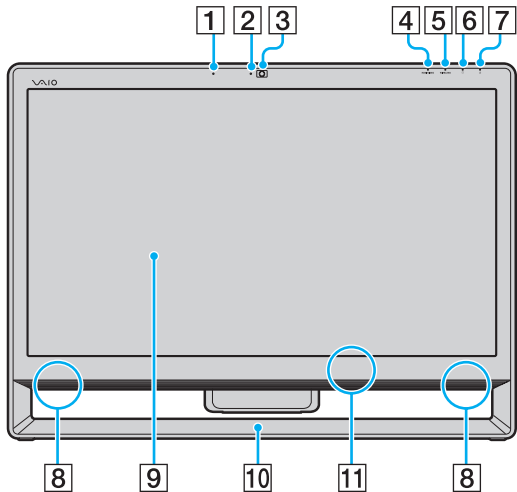
- ❑ **Locating Controls and Ports** ([page 12](#))
- ❑ **About the Indicator Lights** ([page 16](#))
- ❑ **Setting Up Your Computer** ([page 17](#))
- ❑ **Shutting Down Your Computer Safely** ([page 25](#))
- ❑ **Using the Power Saving Mode** ([page 26](#))
- ❑ **Updating Your Computer** ([page 28](#))

## Locating Controls and Ports

Take a moment to identify the controls and ports shown on the following pages.

! The appearance of your computer may be different from those illustrated in this manual due to variations in specifications. It may also vary in some countries or areas.

### Front



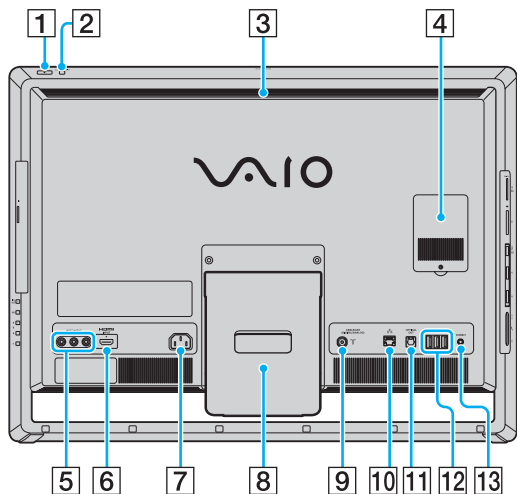
- 1 Built-in microphone (monaural)
- 2 Built-in **MOTION EYE** camera indicator (page 16)
- 3 Built-in **MOTION EYE** camera (page 46)
- 4 **HDMI/VIDEO** input indicator\* (page 16)
- 5 **WIRELESS** indicator (page 16)
- 6 Disc drive indicator (page 16)
- 7 Power indicator (page 16)
- 8 Built-in speakers (stereo)
- 9 LCD screen/touch screen (page 42)

! Due to the mechanical design of the touch screen of your computer, some areas of the screen surface may become warm while you are using the computer for an extended period of time. This is normal and does not indicate a malfunction.

- 10 Bottom chassis frame (page 112)
- 11 Remote sensor\*  
Point the supplied remote commander to this sensor for operations.

\* On selected models only.

## Back



**HDMI**™  
HIGH-DEFINITION MULTIMEDIA INTERFACE

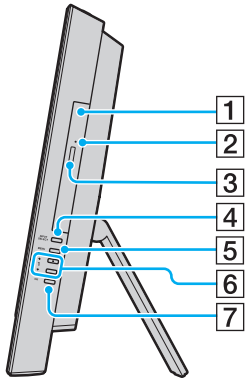
- 1 Power button
- 2 **DISPLAY OFF** button/**DISPLAY OFF** indicator (page 16)  
Press this button to turn off the LCD backlight. While the HDMI input or the video input is selected as the audio/video input source by the **INPUT SELECT** button (page 14), pressing this button also turns off the volume.
- 3 Air exhaust vent
- 4 Memory module compartment cover (page 105)
- 5 **VIDEO INPUT** jacks\*<sup>1</sup> (page 61)
- 6 **HDMI INPUT** port\*<sup>1</sup> (page 61)
- 7 AC input port (page 17)
- 8 Prop-up stand (page 112)
- 9 **CABLE/ANT (DIGITAL/ANALOG)** input port\*<sup>1</sup> (page 54)
- 10 Network (LAN) port (page 81)
- 11 **OPTICAL OUT** port (page 91)  
(Output Sampling Rate: 44.1 KHz/48.0 KHz/96.0 KHz)
- 12 Hi-Speed USB (USB 2.0) ports\*<sup>2</sup> (page 93)
- 13 **CONNECT** button (page 35), (page 39)

\*<sup>1</sup> On selected models only.

\*<sup>2</sup> Support high-/full-/low- speeds.

! The area around the air exhaust vent (3) becomes extremely hot while your computer is on. Be sure to wait until the computer cools down before you touch it.

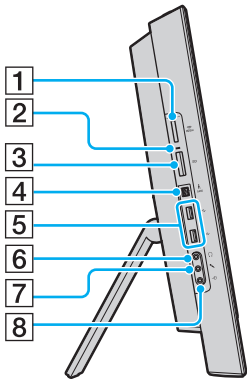
## Right



- 1 Optical disc drive (page 47)
- 2 Manual eject hole (page 140)
- 3 Drive eject button (page 47)
- 4 **INPUT SELECT** button\* (page 63)/  
**INPUT SELECT** indicator\* (page 16)
- 5 **MENU** button\* (page 63)
- 6 **▲/▼** (Up/Down) buttons\* (page 63)
- 7 **OK** button\* (page 63)

\* On selected models only.

## Left



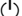

- 1 "Memory Stick Duo" slot\*1 ([page 70](#))
- 2 Media Access indicator ([page 16](#))
- 3 SD memory card slot ([page 76](#))
- 4 i.LINK 4-pin (S400) port ([page 95](#))
- 5 Hi-Speed USB (USB 2.0) ports\*2 ([page 93](#))
- 6 Headphones jack ([page 91](#))
- 7 Microphone jack ([page 92](#))
- 8 Line In jack  
Connect an external audio device to receive audio signals.

\*1 Your computer supports only Duo-size "Memory Stick".

\*2 Support high-/full-/low- speeds.

## About the Indicator Lights

Your computer is equipped with the following indicator lights:

Indicator	Functions
Power 	Illuminates in green while the computer is on, illuminates in orange while the computer is in Sleep mode, and goes out when the computer is turned off.
<b>HDMI/VIDEO*</b>	Illuminates in green while the HDMI input or the video input is selected as the audio/video input source.
Built-in <b>MOTION EYE</b> camera	Illuminates while the built-in camera is in use.
Media Access	Illuminates while data access to a memory card, such as "Memory Stick" and an SD memory card, is in progress. (Do not place the computer into Sleep mode or turn it off while this indicator light is lit.) When the indicator light is unlit, the memory card is not in use.
<b>INPUT SELECT*</b>	Illuminates in green while the HDMI input or the video input is selected as the audio/video input source.
<b>DISPLAY OFF</b>	Illuminates in orange while the LCD backlight is off.
Disc drive 	Illuminates while data access to the built-in storage device or the optical disc drive is in progress. Do not place the computer into Sleep mode or turn it off while this indicator light is lit.
<b>WIRELESS</b>	Illuminates while one or more wireless options are enabled.

\* On selected models only.

# Setting Up Your Computer

## Connecting a Power Source

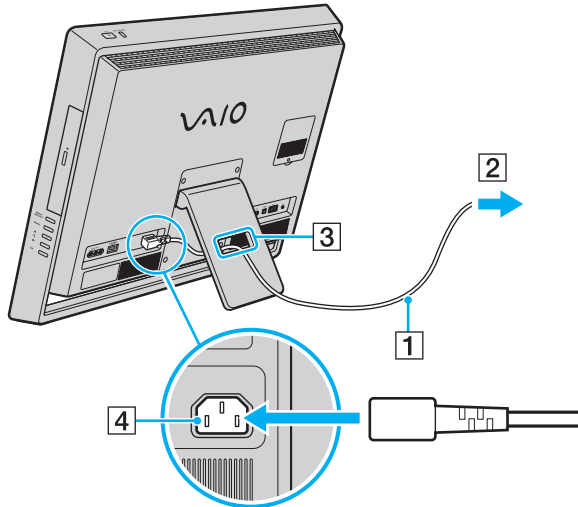
You need a power cord to connect your computer to an AC power source.



Use only the supplied power cord for your computer.

## To connect the power cord

- 1 Plug one end of the power cord (1) into the AC outlet (2).
- 2 Route the power cord through the hole (3) of the prop-up stand and plug the other end into the AC input port (4) on the computer.



To disconnect your computer completely from AC power, turn off the computer and unplug the power cord.

Make sure that the AC outlets are easily accessible.

**!** If you unplug the power cord from your computer while the computer is on or in Sleep mode, you may lose all unsaved data.

## Preparing for Wall Mounting

Four mounting studs and six screws, which are compliant with the Video Electronics Standards Association (VESA) mounting standard, are supplied with your computer for connecting the computer to your mounting system.

**!** Before connecting your computer to your mounting system or changing your computer setup from the desktop type to the wall-mount type, make sure that:

The weight of your computer is within the range of supported weight of your mounting system. See the manual that came with your mounting system for the weight information.

A wireless connection is established both between the computer and the keyboard and between the computer and the mouse. If not, follow the instructions described in **To connect the wireless keyboard (page 35)** and **To connect the wireless mouse (page 39)**.

You shut down the computer, turn off all peripheral devices, disconnect the power cord and the peripheral devices from the power source, and then wait about an hour until the computer cools down before proceeding.

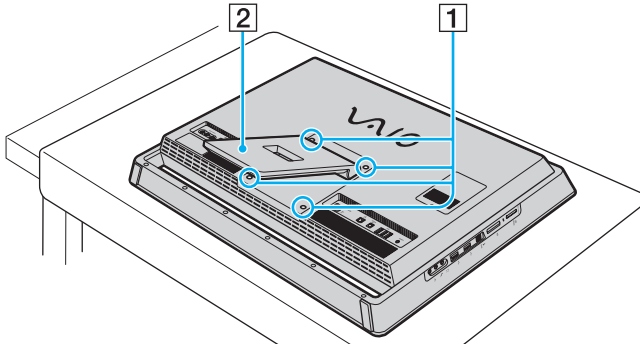
While your computer is wall mounted, do not place any objects on top of your computer so as not to break the frame and cause the main unit to fall from the wall, resulting in damage to the computer or personal injuries.

## To reveal the mounting holes

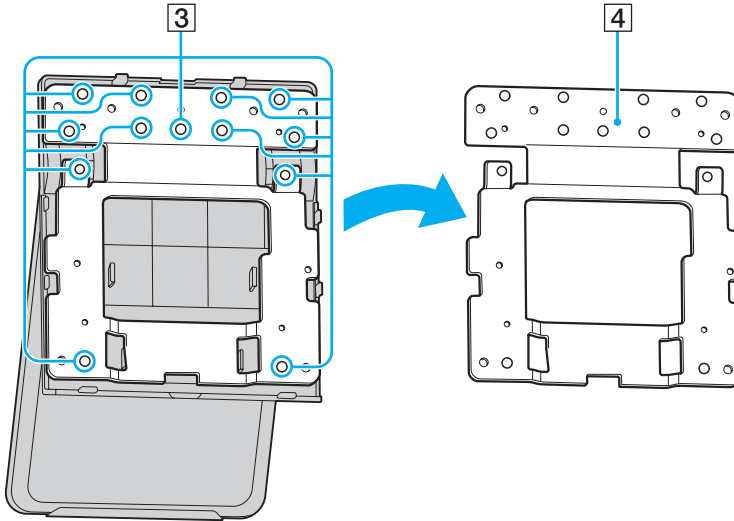
- 1 Gently face down your computer on a flat surface.

! When facing down your computer, be sure to place it on a soft cloth to avoid damage to the screen frame.

- 2 Remove the four screws (1) and take the prop-up stand (2) off the computer.

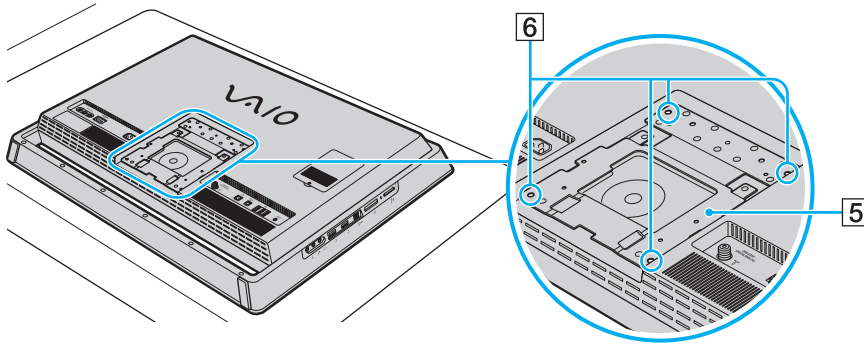


- 3 Remove the 13 screws (3) from the back of the prop-up stand and take off the mounting base plate (4).



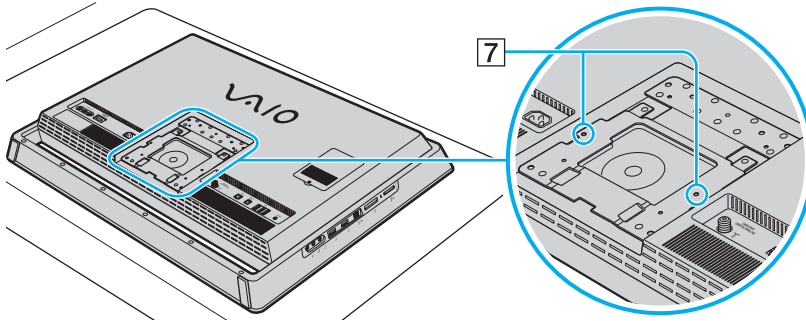
! Be sure to keep the removed screws for future use.

- 4 Flip over the mounting base plate (5) and screw it onto the back of the computer using the four screws (6) that you removed in step 1.



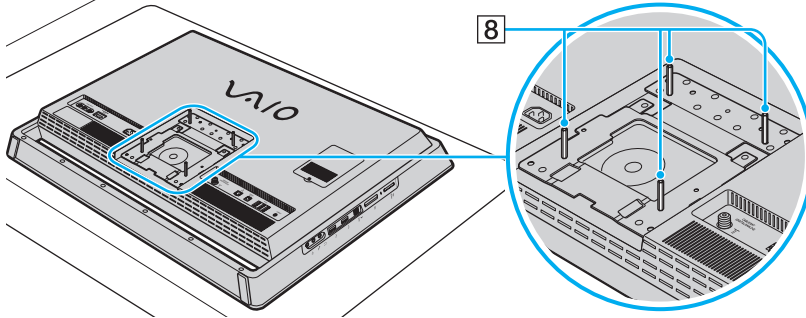
- 5 Secure the mounting base plate additionally with the supplied two long screws (7).

!  
Be sure to tighten the screws with adequate torque.



- 6 Screw the supplied four mounting studs (8) onto the mounting base plate.

! Be sure to use the supplied accessory tool and tighten the mounting studs with adequate torque.



- 7 Secure your wall mount attachment to your computer with the supplied four short screws.

! Do not use any screws other than the supplied ones.

- 8 Follow the instructions described in the manual that came with your mounting system to mount your computer using the hole on each mounting stud.

## Shutting Down Your Computer Safely

To avoid losing unsaved data, be sure to shut down your computer properly, as described below.

To shut down your computer

- 1 Turn off any peripherals connected to the computer.
- 2 Click **Start** and the **Shut down** button.
- 3 Respond to any prompts warning you to save documents or to consider other users and wait for the computer to turn off automatically.  
The power indicator light turns off.

## Using the Power Saving Mode


In addition to the normal operating mode, your computer has a distinct power saving mode called Sleep mode.


**!**  
Turn off your computer if you do not intend to use it for an extended period of time.

<b>Mode</b>	<b>Description</b>
Normal mode	This is the normal state of your computer while it is in use. The green power indicator light is lit while the computer is in this mode.
Sleep mode	Sleep mode turns off the LCD screen and places the built-in storage device(s) and the CPU into a low power consumption mode. The orange power indicator light illuminates while your computer is in this mode.

## Using Sleep Mode

To activate Sleep mode

Click **Start**, the arrow  next to the **Shut down** button, and **Sleep**.

 Alternatively, you can press the sleep button on the wireless keyboard or the remote commander (if supplied) to place your computer into Sleep mode.

To return to Normal mode

- Press any key on the wireless keyboard or the sleep button on the remote commander (if supplied).
- Press the power button on your computer.

**!** Make sure that the batteries of your wireless keyboard and remote commander (if supplied) are properly installed and not running out of power.

If you press and hold the power button for more than four seconds, your computer will turn off automatically. You will lose all unsaved data.

If the computer is not used for a certain period of time, it will enter Sleep mode. To modify this, you can change the Sleep mode settings.

To change the Sleep mode settings

- 1 Click **Start**, **Control Panel**, **Hardware and Sound**, and **Power Options**.
- 2 Click **Change plan settings** under the current power plan.
- 3 Change the time to place the computer into Sleep mode and click **Save Changes**.

## Updating Your Computer

Be sure to install the latest updates on your computer with the following software applications so that the computer can run more efficiently.

❑ **Windows Update**

Click **Start, All Programs**, and **Windows Update** and then follow the on-screen instructions.

❑ **VAIO Update 4**

Click **Start, All Programs, VAIO Update 4**, and **Go to VAIO Web Support** and then follow the on-screen instructions.



Your computer must be connected to the Internet to download the updates.

# Using Your VAIO Computer

This section describes how to get the most out of using your VAIO computer.

- ❑ **Using the Keyboard** ([page 30](#))
- ❑ **Using the Mouse** ([page 36](#))
- ❑ **Using the Touch Screen** ([page 42](#))
- ❑ **Using the Built-in Camera** ([page 46](#))
- ❑ **Using the Optical Disc Drive** ([page 47](#))
- ❑ **Using the TV Function** ([page 54](#))
- ❑ **Using the HDMI/VIDEO Input Function** ([page 61](#))
- ❑ **Using the Remote Commander** ([page 66](#))
- ❑ **Using "Memory Stick"** ([page 70](#))
- ❑ **Using Other Modules / Memory Cards** ([page 76](#))
- ❑ **Using the Internet** ([page 80](#))
- ❑ **Using the Network (LAN)** ([page 81](#))
- ❑ **Using the Wireless LAN** ([page 82](#))
- ❑ **Using the Bluetooth Function** ([page 85](#))

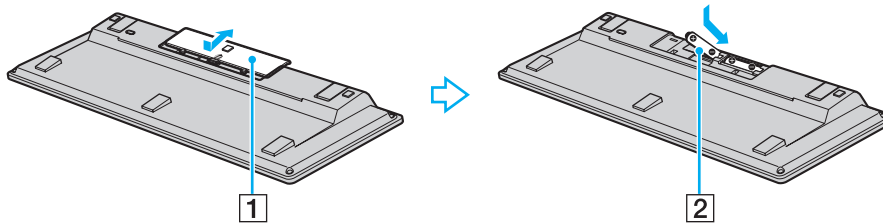
## Using the Keyboard

A wireless keyboard is supplied with your computer.

The wireless keyboard uses a standard key arrangement with additional keys that perform specific functions.

### Using the Wireless Keyboard

Two AA alkaline batteries are supplied with your wireless keyboard. Before attempting to use the wireless keyboard, remove the battery compartment cover (1) from the bottom of the wireless keyboard and install the supplied two AA batteries (2) into the battery compartment.



If the wireless keyboard does not operate properly, the batteries may need to be replaced. If you do not intend to use the wireless keyboard for an extended period of time, remove the batteries to avoid possible damage from battery leakage.

If the wireless keyboard is left unused for 20 minutes or longer, your computer enters Sleep mode. To bring it back into Normal mode, press any key on the wireless keyboard.



To maintain good communication, operate the wireless keyboard within the distance limitations of keyboard: approximately 32.8 feet (10 m) from your computer.

You cannot use the wireless keyboard in conjunction with the HDMI/VIDEO input function (page 61).

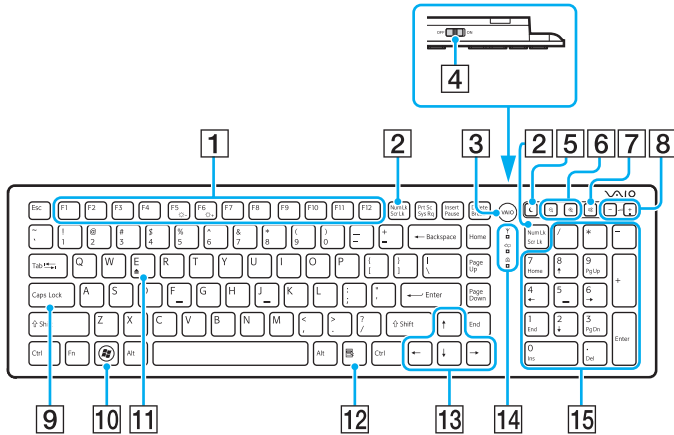
If you find your wireless keyboard not working, for example after you used the keyboard with another VAIO model, reconnect the keyboard. See **To connect the wireless keyboard (page 35)** for the detailed procedure.

Avoid using any wireless devices that exchange radio signals on the 2.4 GHz frequency band near the wireless keyboard. These devices may cause interference, causing the keyboard to stop working properly.

Do not place metal furniture or objects near your computer or wireless keyboard, as this may create interference, causing the keyboard to stop working properly.

Do not mix old (used) and new batteries when replacing batteries in the wireless keyboard. Be sure to use the same type and manufacture of the battery.

Do not mix alkaline with manganese batteries. Using incompatible batteries or mixing used, new or different types of batteries can damage the wireless keyboard.



Illustrated above is the English keyboard as an example.

**1** Function keys

Perform certain tasks. The task associated with each function key varies among software applications except the following combinations with the **Fn** key to change the LCD brightness of your computer screen.

**Fn+F5:** Decreases lighting intensity of the LCD screen.

**Fn+F6:** Increases lighting intensity of the LCD screen.



While using the HDMI/VIDEO input function, you cannot use the function keys on the wireless keyboard to change the LCD brightness. To change the brightness while using the HDMI/VIDEO input function, see **Using the HDMI/VIDEO Input Control Buttons (page 63)** for the procedure.

**2** Num Lk/Scr Lk key

Activates/deactivates Num Lk mode. To activate/deactivate Scr Lk mode, use this key in conjunction with the **Fn** key.

When Num Lk or Scr Lk mode is activated or deactivated, the



(Num lock) or (Scroll lock) icon appears on the taskbar along with a pop-up message to indicate a mode change.



You can keep the Num lock and/or Scroll lock icon on the taskbar. To do so, right-click the  $\Delta$  icon on the taskbar, click **Customize notification icons**, and then select **Show icon and notifications** for your desired icon.

**3** VAIO button

Launches the **Media Gallery**.






**4** Power switch

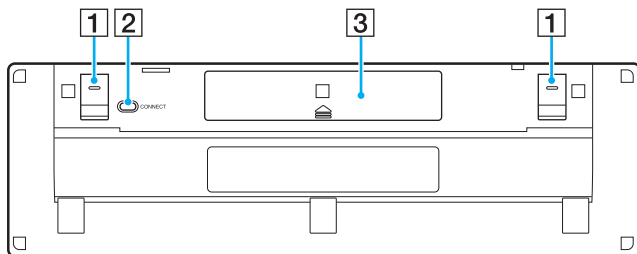
Slide the switch to turn the wireless keyboard on and off.

**5** Sleep button

Provides a lower level of power consumption.

For details on power management, see **Using the Power Saving Mode (page 26)**.

- 6** Zoom buttons  
Change the size of an image or a document displayed on some software.  
Press  to make the view look smaller and further away (zoom out).  
Press  to make the view look bigger and closer (zoom in).  
See the help file included with the **VAIO Control Center** for more information.
- 7** Muting button\*  
Turns the volume on and off.
- 8** Volume control buttons\*  
Increase (+) or decrease (-) the volume.
- 9** **Caps Lock** key  
Activates/deactivates Caps Lock mode where letters are all typed in upper case.
- 10** Windows key  
Displays the **Start** menu.
- 11** **E** key  
Ejects the optical disc drive tray when used in conjunction with the **Fn** key.
- 12** Applications key  
Displays a context-sensitive shortcut menu (if any).
- 13** Directional arrow keys  
Move the pointer on the computer screen.
- 14** Indicator lights  
 (Battery): Stays off while the AA batteries for the wireless keyboard are sufficient and blinks when the batteries are running out of power.  
 (Caps lock): Turns on when Caps Lock mode is activated.  
 (Connect): Blinks slowly while connection between the computer and the wireless keyboard is down, blinks rapidly when the keyboard is ready for connection with the computer, and turns off when the connection is established.
- 15** Numeric keypad  
Use the numeric keypad to type numbers or to perform basic math calculations.
- \* Disabled while you are using the HDMI/VIDEO input function.



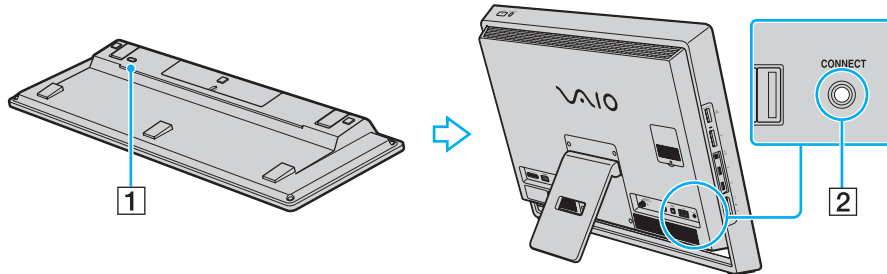
- 1** Keyboard feet  
Flip open to put the wireless keyboard in a more 'ergonomic' position.
- 2** **CONNECT** button ([page 35](#))  
Press to enable the wireless keyboard to communicate with the computer.
- 3** Battery compartment  
Storage compartment for the AA batteries.

## To connect the wireless keyboard

! To connect the wireless keyboard, it must be located within a range of approximately 11.8 inches (30 cm) to approximately 39.4 inches (1 m) from the computer.

- 1 Make sure the supplied two AA batteries are properly installed.
- 2 Turn on the computer.
- 3 Slide the power switch on the back of the keyboard to the **ON** position.
- 4 Press the **CONNECT** button (1) on the bottom of the keyboard.
- 5 Press the **CONNECT** button (2) on the back of the computer while the connect indicator light  $\Upsilon$  is blinking rapidly. The rapid-blinking connect indicator light turns off when connection is established between the computer and the keyboard. If not, repeat the procedure.

! The connect indicator light  $\Upsilon$  blinks rapidly for about one minute to indicate that the keyboard is ready for connection with the computer. If no connection is made during this period, the indicator light goes blinking slowly to indicate that the connection is down.



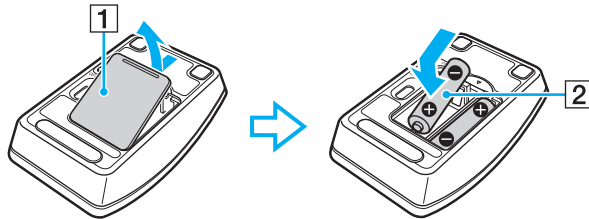
## Using the Mouse

A wireless mouse is supplied with your computer.

The wireless mouse has no cables to plug in and uses a light-emitting diode (LED) instead of a ball.

### Using the Wireless Mouse

Two AA alkaline batteries are supplied with your wireless mouse. Before attempting to use the wireless mouse, remove the battery compartment cover (1) from the bottom of the wireless mouse and install the supplied two AA batteries (2) into the battery compartment.



If the wireless mouse does not operate properly, the batteries may need to be replaced. If you do not intend to use the wireless mouse for an extended period of time, remove the batteries to avoid possible damage from battery leakage.

**!**  
To maintain good communication, operate the wireless mouse within the distance limitations of mouse: approximately 32.8 feet (10 m) from your computer.

If you find your wireless mouse not working, for example after you used the mouse with another VAIO model, reconnect the mouse. See **To connect the wireless mouse (page 39)** for the detailed procedure.

Avoid using any wireless devices that exchange radio signals on the 2.4 GHz frequency band near the wireless mouse. These devices may cause interference, causing the mouse to stop working properly.

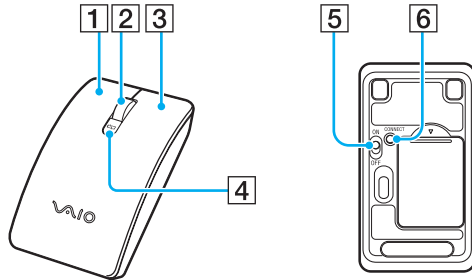
Use surfaces such as plain paper, card stock, or fabric that have minimal repetitive patterns.

Avoid using the wireless mouse on surfaces such as mirrors, smooth glass, or magazines that have half- tone printing.

Do not place metal furniture near your computer or wireless mouse, as this may create interference, causing the mouse to stop working properly.

Do not mix old (used) and new batteries when replacing batteries in the wireless mouse. Always use the same type and manufacture of the battery.

Do not mix alkaline with manganese batteries. Using incompatible batteries or mixing used, new or different types of batteries can damage the wireless mouse.

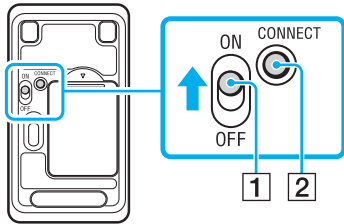


- 1** Left button  
Click or double-click the left button to select items. To drag and drop items, hold the left button down while sliding the mouse, then release the button to drop the item.
- 2** Central wheel  
Rotate the central wheel to scroll up or down a page. Press the wheel once to lock the scroll action and control the movement by moving the entire mouse (the scroll function is available only with applications that support it).
- 3** Right button  
Press the right button once to display a context-sensitive shortcut menu (if any).
- 4** Battery indicator light  
Blinks when the mouse batteries are running out of power.
- 5** Power switch  
Slide the switch to turn the mouse on and off.
- 6** **CONNECT** button ([page 39](#))  
Press to enable communication between the computer and the wireless mouse.

## To connect the wireless mouse

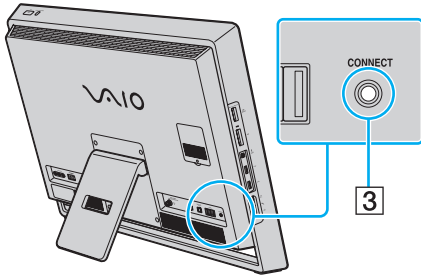
! To connect the wireless mouse, it must be located within a range of approximately 11.8 inches (30 cm) to approximately 39.4 inches (1 m) from the computer.

- 1 Make sure the supplied two AA batteries are properly installed.
- 2 Turn on the computer.
- 3 Slide the power switch (1) on the bottom of the mouse to the **ON** position.



- 4 Press the **CONNECT** button (2) on the bottom of the mouse.

- 5 Press the **CONNECT** button (3) on the back of the computer within 10 seconds from step 4. Communication between the mouse and the computer should now be established. If not, repeat the procedure.



## Adjusting the Mouse Functions

- 1 Click **Start** and **Control Panel**.
- 2 Click **Mouse** under **Hardware and Sound**.  
The **Mouse Properties** window appears.
- 3 Change the settings.

## Using the Touch Screen

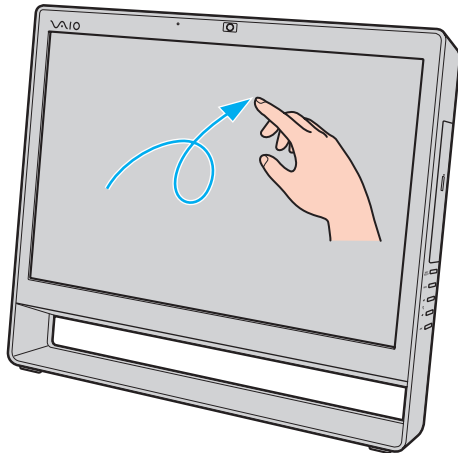
Embedded infrared optical sensors of your computer's touch screen enable direct interaction with the computer using your finger(s). You can perform various gestures on the touch screen to compensate for mouse operations, such as selecting items and scrolling.



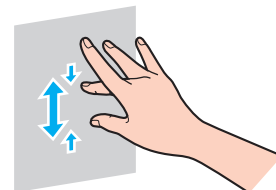
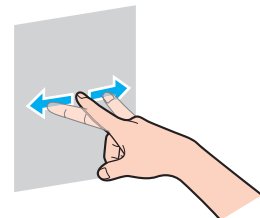
The touch screen function may be disabled depending on the software application you are using.

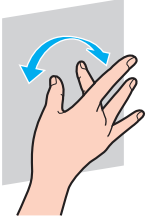
Your computer is equipped with two optical sensors and supports multi-touch input of up to two points. When rotating a picture on the touch screen, for example, a rotating gesture may not be successfully recognized by your computer, which, however, does not indicate a malfunction.

The touch screen function is disabled while you are using the HDMI/VIDEO input function. See **Using the HDMI/VIDEO Input Function (page 61)** for more information.



Gesture	Description
Tap	Tap on the touch screen once with a finger. This gesture is equivalent to a click with a mouse.
Double-tap	Tap on the touch screen twice in quick succession with a finger. This gesture is equivalent to a double-click with a mouse.
Press-and-hold	Touch and hold on the touch screen with a finger until a circling icon appears, and then lift the finger off the screen to display a context-sensitive shortcut menu (if any). This gesture is equivalent to a right-click with a mouse.
Press-and-tap	Touch and hold on the touch screen with a finger and tap with another finger to display a context-sensitive shortcut menu (if any). This gesture is equivalent to a right-click with a mouse.
Drag	Put a finger on the touch screen and slide it while keeping the finger in contact with the screen. Drag left or right for panning; up or down for scrolling.
Flick	<p>Put a finger on the touch screen and slide it linearly in quick motion.</p> <p>You can assign an individual task to up to eight flicks. There are four default flick assignments: you can flick left to move backward, flick right to move forward, flick up to scroll up, and flick down to scroll down. When a flick gesture is successfully recognized, an icon appears with a description of the assignment on the desktop.</p> <p>To add or change the flick assignments, click <b>Start, Control Panel, Hardware and Sound</b>, and <b>Pen and Touch</b> to access the <b>Flick</b> tab.</p>
Zoom	<p>With some software applications, you can pinch on the touch screen with two fingers for zooming. Pinch open to zoom in or pinch close to zoom out.</p>



Gesture	Description
Rotate	<p>With some software applications, such as photo viewer software, you can put two fingers on the touch screen and slide them in circles to rotate the underlying object.</p> 



You can disable the touch screen function with the **Control Panel**. Click **Start, Control Panel, Hardware and Sound**, and **Pen and Touch**, and then click to cancel the **Use your finger as an input device** check box on the **Touch** tab.

You can change the DPI to enlarge the view size of the touch screen for easier touch works. To do so, click **Start, Control Panel, Hardware and Sound, Display**, and **Set custom text size (DPI)**, and then specify your preference. Changing the DPI, however, may distort the screen view while you are using a non-compatible software application or viewing a non-compatible web site. Depending on the model you purchased, the text size may have set to **Larger** by default.

You can bring your computer from Sleep mode to Normal mode by touching the touch screen. This, however, may not work in some cases including the one, for example, where you were using the HDMI/VIDEO input function when the computer entered Sleep mode. In such a case, press any key on the wireless keyboard or the power button on the computer to bring the computer back into Normal mode.

## Displaying the On-screen Keyboard

While the touch screen function is enabled, you can use the on-screen keyboard, instead of the wireless keyboard, for text entry. To display the on-screen keyboard, simply tap on a text entry field. Alternatively, you can use the keyboard tab at the left edge of the desktop to display the on-screen keyboard. Tap on the tab to pull it out, and then tap on it once again to display the keyboard in full view.

## Notes on Using the Touch Screen

- ❑ To repeat tapping, be sure to lift your finger at least 1/6 inch (4 mm) off the touch screen after each tap.
- ❑ When tapping triggers an unintentional operation, make sure that no other parts of your body, including your clothes, are in contact with the touch screen. The touch screen may even respond to a touch made by an insect that happens to come in contact with the screen.
- ❑ Be sure to touch gently with your fingertip, not with the ball of your finger. If the area of contact with the touch screen is beyond specifications of the touch screen function, your computer may not recognize your touch.
- ❑ Depending on the spot you touch on the screen, the touch screen sensitivity varies. This is normal and does not indicate a malfunction.
- ❑ Gentle touches always work. The degree of pressing force does not count for operations as the touch screen employs optical technology.

## Using the Built-in Camera

Your computer is equipped with a built-in **MOTION EYE** camera.

With the preinstalled image capture software, you can perform the following:

- ❑ Capture still images and movies
- ❑ Sense and capture object movements for monitoring purposes
- ❑ Edit captured data



Turning on the computer activates the built-in camera.

Video conferences are possible with the appropriate software.



Launching or exiting your instant messaging or video editing software does not activate or deactivate the built-in camera.

Do not place your computer into Sleep mode while you are using the built-in camera.

### To use the preinstalled image capture software

- 1 Click **Start**, **All Programs**, **ArcSoft WebCam Companion 3**, and **WebCam Companion 3**.
- 2 Click your desired icon in the main window.  
For detailed information on how to use the software, see the help file included with the software.



When capturing an image or a movie in a dark place, click the **Capture** icon in the main window, and then click the **WebCam Settings** icon and select the low light or low light compensation option in the properties window.

## Using the Optical Disc Drive

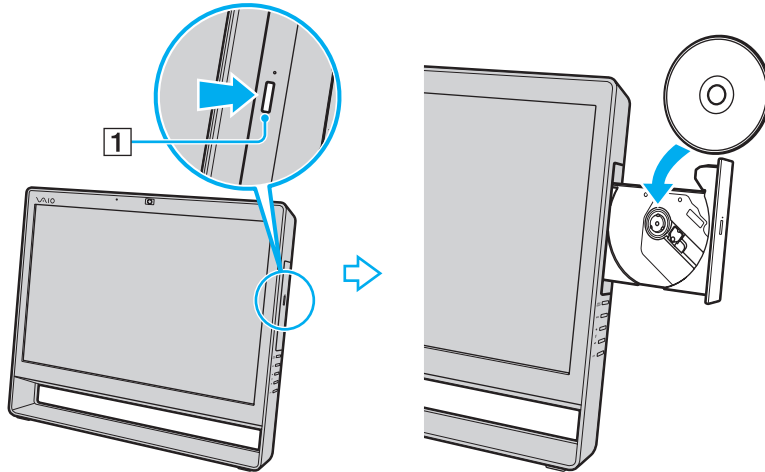
Your computer is equipped with an optical disc drive.



Features and options in this section may not be available on your computer.  
See the specifications to find out about the configuration of your computer.

## To insert a disc

- 1 Turn on the computer.
- 2 Press the drive eject button (1) or the **Fn+E** keys to open the drive. The drive tray slides out.
- 3 Hold the back of the drive tray with one hand, place a disc in the middle of the drive tray with the label side facing toward you, and gently push it toward the drive tray until the disc clicks into place.



! Do not exert pressure on the drive tray. Be sure to hold the back of the drive tray when placing/removing a disc onto/from the drive tray.

- 4 Close the drive tray by pushing it in gently.

! Do not remove the optical disc while your computer is in Sleep mode. Be sure to bring the computer back into Normal mode before removing the disc.

## Supported Disc Media

Your computer plays and records CDs, DVDs, and Blu-ray Disc™ media, depending on the model you purchased. See the reference chart below to find out which type of optical disc drive supports which types of media.

PR: playable and recordable  
P: playable but not recordable  
–: not playable or recordable

	CD-ROM	Video CD	Music CD	CD Extra	CD-R/RW	DVD-ROM	DVD-Video	DVD-R/RW	DVD+R/RW	DVD+R DL (Double Layer)	DVD-R DL (Dual Layer)	DVD-RAM <sup>*1 *2</sup>	BD-ROM	BD-R/RE <sup>*3</sup>
DVD±RW/±R DL/RAM	P	P	P	P	PR <sup>*5</sup>	P	P	PR	PR	PR	PR	PR	–	–
Blu-ray Disc	P	P	P	P	PR <sup>*5</sup>	P	P	PR	PR	PR	PR	PR	P	PR <sup>*4</sup>
Blu-ray Disc Combo	P	P	P	P	PR <sup>*5</sup>	P	P	PR	PR	PR	PR	PR	P	P

- <sup>\*1</sup> The DVD±RW/RAM disc drive on your computer does not support the DVD-RAM cartridge. Use non-cartridge discs or discs with a removable cartridge.
- <sup>\*2</sup> Writing data to single-sided DVD-RAM discs (2.6 GB) compliant with DVD-RAM Version 1.0 is not supported. DVD-RAM Version 2.2/12X-SPEED DVD-RAM Revision 5.0 disc is not supported.
- <sup>\*3</sup> The Blu-ray Disc drive on your computer does not support BD-RE Disc media in Version 1.0 format and Blu-ray Disc media with a cartridge.
- <sup>\*4</sup> Supports writing data to BD-R Part1 Version 1.1/1.2/1.3 discs (single-layer discs with the capacity of 25 GB, dual-layer discs with the capacity of 50 GB) and BD-RE Part1 Version 2.1 discs (single-layer discs with the capacity of 25 GB, dual-layer discs with the capacity of 50 GB).
- <sup>\*5</sup> Writing data to Ultra Speed CD-RW discs is not supported.

! This unit is designed to playback discs that conform to the Compact Disc (CD) standard. DualDiscs and some music discs encoded with copyright protection technologies do not conform to the Compact Disc (CD) standard. Therefore, these discs may not be compatible with this unit.

When you buy pre-recorded or blank discs for use with your VAIO computer, be sure to read the notices on the disc package carefully to check both playback and recording compatibility with your computer's optical disc drives. Sony does NOT guarantee the compatibility of VAIO optical disc drives with discs that are not compliant with the official "CD," "DVD," or "Blu-ray Disc" standard. USING NON-COMPLIANT DISCS CAN CAUSE FATAL DAMAGE TO YOUR VAIO PC OR CREATE SOFTWARE CONFLICTS AND CAUSE SYSTEM HANGING.

For inquiries about disc formats, contact the individual publisher of the pre-recorded disc or the manufacturer of the recordable disc.



8 cm disc writing is not supported.

! To play copyright protected Blu-ray Disc media continually, update the AACS key. The AACS key update requires Internet access.

As with other optical media devices, circumstances may limit compatibility or prevent Blu-ray Disc media playback. VAIO computers may not support movie playback on packaged media recorded in AVC or VC1 formats at high bit rates.

Region settings are required for some contents of DVD and BD-ROM Disc media. If the region setting on the optical disc drive does not match the region coding on the disc, playback is not possible.

Some content may restrict video output to standard definition or prohibit analog video output. When you output video signals through digital connections, such as an HDMI connection or a DVI connection, it is strongly recommended that a digital HDCP compliant environment be implemented for optimum compatibility and viewing quality.

Exit all memory-resident utility software before playing or writing a disc as it may cause the computer to malfunction.

## Notes on Using the Optical Disc Drive

### Notes on writing data to a disc

- ❑ Only use circular discs. Do not use discs in any other shape (star, heart, card, etc.), as this may damage the optical disc drive.
- ❑ Do not strike or shake your computer while the optical disc drive is writing data to a disc.
- ❑ Do not plug or unplug the power cord or the AC adapter while the optical disc drive is writing data to a disc.

### Notes on playing discs

To achieve optimum performance of disc playback, you should follow these recommendations:

- ❑ Some CD players and computer optical disc drives may not be able to play audio CDs created with the CD-R or CD-RW media.
- ❑ Some DVD players and computer optical disc drives may not be able to play DVDs created with the DVD+R DL, DVD-R DL, DVD+R, DVD+RW, DVD-R, DVD-RW, or DVD-RAM media.
- ❑ You may not be able to play some Blu-ray Disc content on your computer, or the computer may become unstable during Blu-ray Disc playback. To play content normally, download and install the latest updates for the **WinDVD BD** using the **VAIO Update**.  
For information on how to use the **VAIO Update**, see **Updating Your Computer (page 28)**.
- ❑ Depending on system environment, you may find sound interruptions and/or dropped frames during AVC HD playback.
- ❑ Do not place your computer into the power saving mode while your computer is playing a disc.

## Notes on region codes

Region code indicators are labeled on the discs or packages to indicate in which region and on what type of player you can play the disc. If the region code indicates "all," you can play this disc in most regions of the world. If the region code for your residence area is different from the label, you cannot play the disc on your computer.

## Playing Discs

To play a disc

- 1 Insert a disc into the optical disc drive.

! Close all running software applications before playing a disc.

- 2 If nothing appears on the desktop, click **Start, All Programs**, and your desired software to play the disc. For instructions on how to use the software, see the help file included with the software.

## Copying Files to Discs

To copy files to a disc

- 1 Insert a recordable disc into the optical disc drive.

! Close all running software applications before copying files to a disc.

- 2 If nothing appears on the desktop, click **Start, All Programs**, and your desired disc burning software to copy files to the disc. For instructions on how to use the software, see the help file included with the software.

## Using the TV Function

Your computer may have one hybrid TV tuner board installed to enhance your audio and visual experience in conjunction with the **Windows Media Center**.



The hybrid TV tuner board supports both NTSC and ATSC signals but you must change your TV connection setup to switch the receiving signal type.



Features and options in this section may not be available on your computer.  
See the specifications to find out about the configuration of your computer.

The **Windows Media Center** provides you with a wide range of TV, DVD, and video viewing, as well as music recording and playback. This section describes how to set up your TV and other equipment.

## Setting Up TV Connections

! The following connections may not be available in some countries or areas.

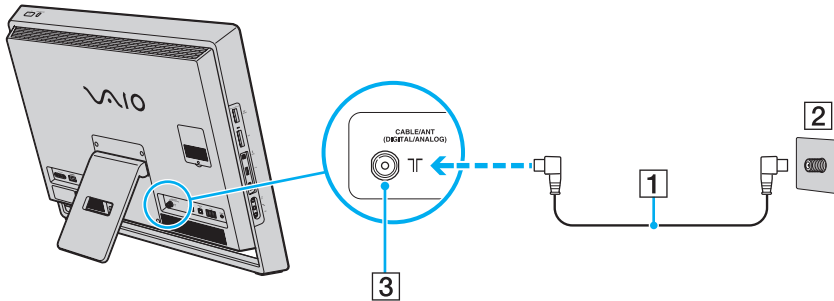
The state of receiving TV signals widely varies depending on services available in your country area as well as connection types.

No TV coaxial cables are supplied with your computer. Make sure that you have a sufficient number of TV coaxial cables ready beforehand.

### Connecting to standard cable access (CATV)

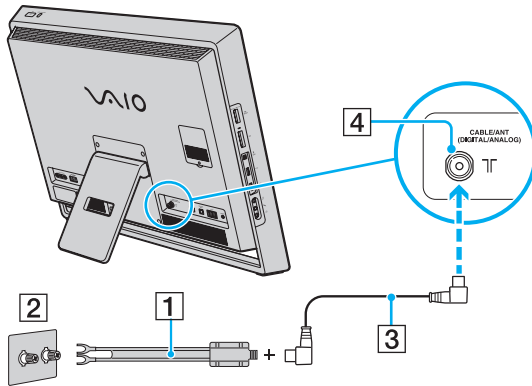
To connect in CATV mode (Option 1)

- 1 Connect one end of the TV coaxial cable (1) to your cable service access (wall outlet) (2).
- 2 Connect the other end to the **CABLE/ANT (DIGITAL/ANALOG)** input port (3) on the computer.



## To connect in CATV mode (Option 2)

- 1 Connect the two metal hooks on a 75-ohm/300-ohm RCA transformer cable (1) to the screw-type grips at your cable service access (wall outlet) (2).
- 2 Connect one end of the TV coaxial cable (3) to the transformer end of the RCA transformer cable (1). Connect the other end to the **CABLE/ANT (DIGITAL/ANALOG)** input port (4) on the computer.



## Connecting to a standard antenna

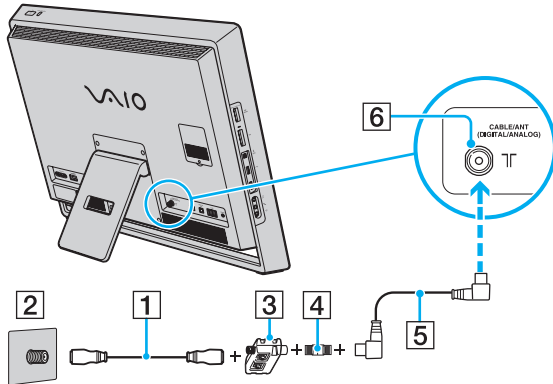
You can connect your computer to an indoor/outdoor antenna system, using Option 1 or Option 2 from the previous section, **Connecting to standard cable access (CATV) (page 55)**. Depending on the type of antenna system in your home, your connection may require a VHF/UHF RF combiner/transformer to connect the computer and the indoor/outdoor antenna system.



If you are connecting to an indoor/outdoor antenna, you may need to reorient the antenna for best reception. Move the antenna cable away from other power sources or connectors to reduce signal interference.

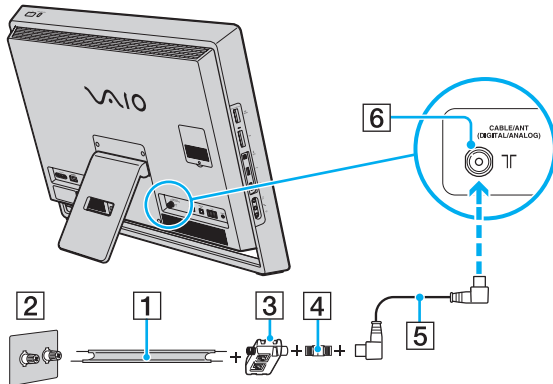
### To connect in land-based (terrestrial) broadcasting mode (Option 1)

- 1 Connect one end of a TV coaxial cable (1) to your antenna outlet (2). Connect the other end to a VHF/UHF RF combiner/transformer (3).
- 2 Connect a coaxial cable feed connector (4) to the VHF/UHF RF combiner/transformer (3).
- 3 Connect one end of another TV coaxial cable (5) to the feed connector (4). Connect the other end to the **CABLE/ANT (DIGITAL/ANALOG)** input port (6) on the computer.



## To connect in land-based (terrestrial) broadcasting mode (Option 2)

- 1 Connect one end of a 300-ohm twin lead cable (1) to the screw-type grips at your antenna outlet (2). Connect the other end to the grips on a VHF/UHF RF combiner/transformer (3).
- 2 Connect a coaxial cable feed connector (4) to the VHF/UHF RF combiner/transformer (3).
- 3 Connect one end of the TV coaxial cable (5) to the feed connector (4). Connect the other end to the **CABLE/ANT (DIGITAL/ANALOG)** input port (6) on the computer.





## Using the HDMI/VIDEO Input Function

Your computer may be equipped with an **HDMI INPUT** port and **VIDEO INPUT** jacks that enable you to connect an external audio/video device, such as an HDD video recorder and a video game player. With the HDMI/VIDEO input function, you can receive high-definition audio and video signals from the connected device and play the audio/video content on your computer without turning on the computer and starting Windows.



Features and options in this section may not be available on your computer.  
See the specifications to find out about the configuration of your computer.



You cannot capture audio/video signals coming through the **HDMI INPUT** port or the **VIDEO INPUT** jacks and save them into a file on your computer.

## Connecting an External Audio/Video Device

To connect an external audio/video device to the **HDMI INPUT** port or the **VIDEO INPUT** jacks (page 13), you need an HDMI cable or an audio/video cable with triple RCA plugs.

! No HDMI cables or audio/video cables with triple RCA plugs are supplied with your computer. Be sure to have one ready beforehand.

Be sure to use an HDMI cable approved by HDMI Licensing, LLC.

### To connect an external audio/video device to your computer

- 1 Plug one end of an HDMI cable or an audio/video cable with triple RCA plugs to an appropriate port or jacks on an external audio/video device.
- 2 Plug the other end to the **HDMI INPUT** port or the **VIDEO INPUT** jacks on the computer.
- 3 Turn on the connected device.

The **INPUT SELECT** and **HDMI/VIDEO** indicator lights illuminate in green. If not, press the **INPUT SELECT** button to switch the audio/video input source to the HDMI input or the video input.






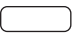

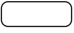


You do not need to turn on your computer and start Windows to switch the audio/video input source.

## Using the HDMI/VIDEO Input Control Buttons

The HDMI/VIDEO input control buttons are located on the right of your computer (page 14) for operations with the HDMI/VIDEO input function, including input source selections and On-Screen Display (OSD) menu operations.

The following table describes the task(s) assigned to each control button.

HDMI/VIDEO input control button	Assigned task
<b>INPUT SELECT</b> button INPUT SELECT 	Switches the audio/video input among three sources: HDMI input, video input, and computer input.  Alternatively, you can press the <b>INPUT SELECT</b> button on the remote commander (if supplied) to switch the audio/video input source. See <b>Using the Remote Commander (page 66)</b> for more information. While the HDMI input or the video input is selected, the <b>INPUT SELECT</b> and <b>HDMI/VIDEO</b> indicator lights illuminate in green.
<b>MENU</b> button MENU 	Shows/hides the OSD menu on your computer screen.  Touch screen operations are not available on the OSD menu.
<b>▲/▼ (Up/Down)</b> button ▲  ▼ 	Navigates through options on the OSD menu. While the OSD menu is not displayed and the HDMI input or the video input is selected, you can use the ▲/▼ button to increase/decrease the volume as well.  Alternatively, you can use the volume control buttons, including the muting button, on the remote commander (if supplied) to change the volume regardless of the current audio/video input source. The respective buttons on the wireless keyboard, however, work only while the computer input is selected as the audio/video input source.
<b>OK</b> button OK 	Executes your selection on the OSD menu.


## Using the OSD Menu

The OSD menu is provided for customizing your computer to suit your preference.

Press the **MENU** button on the right of your computer to display the OSD menu and use the **▲/▼** button to navigate through options until you find your desired one.

## Using the menu for the HDMI/VIDEO input function

The following lists some settings that you may find helpful for using the HDMI/VIDEO input function.



<b>Selecting language mode of the OSD menu</b>	<ol style="list-style-type: none"><li>1 Select <b>OPTION</b> and <b>LANGUAGE</b>.</li><li>2 Select the desired language.</li><li>3 Press the <b>OK</b> button.</li></ol>
<b>Selecting Input Sensing mode</b>	<p>You can select one of the three Input Sensing modes: <b>AUTO ON</b>, <b>AUTO OFF (Normal)</b>, and <b>AUTO OFF (Power Save)</b>. In <b>AUTO ON</b> mode, connecting an external audio/video device to the <b>HDMI INPUT</b> port or the <b>VIDEO INPUT</b> jacks while your computer is off or in Sleep mode automatically switches the audio/video input source to the HDMI input or the video input, respectively. In <b>AUTO OFF (Normal)</b> or <b>AUTO OFF (Power Save)</b> mode, automatic input selection is not performed. By default, <b>AUTO OFF (Normal)</b> mode is selected.</p> <ol style="list-style-type: none"><li>1 Select <b>OPTION</b> and <b>INPUT SENSING</b>.</li><li>2 Select the desired mode.</li><li>3 Press the <b>OK</b> button.</li></ol> <p> Selecting <b>AUTO OFF (Power Save)</b> reduces power consumption. To resume power, press the <b>INPUT SELECT</b> button on the computer or the remote commander (if supplied).</p>
<b>Disabling the HDMI/VIDEO input function</b>	<ol style="list-style-type: none"><li>1 Select <b>OPTION</b> and <b>DISABLE INPUT</b>.</li><li>2 Select the desired mode.</li><li>3 Press the <b>OK</b> button.</li></ol>

## Using the menu for the PinP and Swap functions

The PinP function is provided for showing a small sub window on the main window and switching the audio/video input source for the sub window among three sources: the computer input, the HDMI input, and the video input. While the PinP function is enabled, you can additionally use the Swap function to interchange the input signals between the main and sub windows.

<b>Enabling the PinP function</b>	<ol style="list-style-type: none"><li>1 Select <b>PinP</b> and <b>PinP MODE</b>.</li><li>2 Select <b>ON</b> mode.</li><li>3 Press the <b>OK</b> button.</li></ol>
<b>Switching the audio/video input source for the sub window</b>	<ol style="list-style-type: none"><li>1 Select <b>PinP</b> and <b>SUB INPUT</b>.</li><li>2 Select the desired input source.</li><li>3 Press the <b>OK</b> button.</li></ol>
<b>Swapping the input signals between the main and sub windows</b>	<ol style="list-style-type: none"><li>1 Select <b>PinP</b> and <b>SWAP</b>.</li><li>2 Press the <b>OK</b> button.</li></ol>

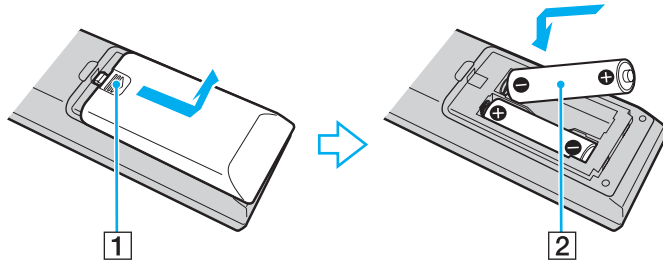


Alternatively, you can use the PinP  and Swap  buttons on the remote commander (if supplied) for the above operations. See **Using the Remote Commander (page 66)** for more information.

## Using the Remote Commander

If your computer supports the TV function (page 54), then a remote commander is supplied with the computer for using a wide variety of audio/video related software applications, including the **Windows Media Center**.

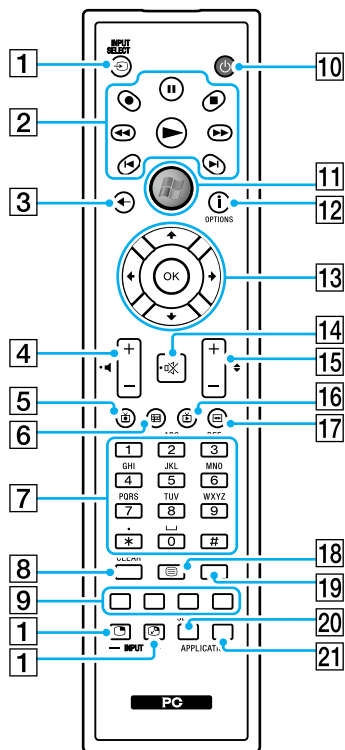
Two AA manganese batteries are supplied with the remote commander. Before attempting to use the remote commander, remove the battery compartment cover (1) from the bottom of the remote commander and install the supplied two AA manganese batteries (2) into the battery compartment.












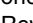


If the remote commander does not operate properly, you may need to replace the batteries. When the remote commander is not going to be used for an extended period of time, remove the batteries to avoid possible damage from battery leakage.



Buttons with no assigned tasks are not described below.



 Some button functions may not be available.  
Illustrated above is the English remote commander as an example.

- 1** HDMI/VIDEO input control buttons\*  
**INPUT SELECT**  button  
Press to switch the audio/video input source among the computer input, the HDMI input, and the video input.  
**PinP**  button  
Press to show a small sub window on the main window. While the sub window is in view, this button works as the **INPUT SELECT** button for the sub window or hide the sub window.  
**Swap**  button  
While the sub window is in view, press to swap the input signals between the main and sub windows.
- 2** Pause  button  
Press to pause or resume media playback.  
**Stop**  button  
Press to stop media playback or TV recording session.  
**Forward**  button  
Press to fast-forward media at three speeds.  
**Skip**  button  
Press to move media forward, for example, one audio track, one DVD chapter, and 30 seconds of recorded TV or video.  
**Replay**  button  
Press to move media backward, for example, one audio track, one DVD chapter, and 7 seconds of TV or video.  
**Rewind**  button  
Press to move media backward at three speeds.  
**Record**  button  
Press to begin recording.  
**Play**  button  
Press to begin media playback.

- 3 Back button  
Press to return to the previous window.
- 4 Volume control buttons\*<sup>2</sup>  
Press to increase (+) or decrease (-) the volume.
- 5 Recorded TV button  
Press to view previously recorded TV programs.
- 6 Guide button  
Press to view the TV program guide for your area.
- 7 Alphanumeric buttons  
Press to select specific channels or enter text. (Press **ENTER** or **OK** to activate the channel selection.)
- 8 **CLEAR** button  
Press to backspace and delete entered text.
- 9 Teletext TV program mode buttons
  - Red button  
Press to jump to the red shortcut link in teletext TV program mode.
  - Green button  
Press to jump to the green shortcut link in teletext TV program mode.
  - Yellow button  
Press to jump to the yellow shortcut link in teletext TV program mode.
  - Blue button  
Press to jump to the blue shortcut link in teletext TV program mode.
- 10 Sleep button  
Press to place the computer into Sleep mode to reduce power consumption.
- 11 Start button  
Press to open the **Start** menu of the **Windows Media Center**.
- 12 More button / **OPTIONS** button  
Press to view additional options that are available for features on software applications, such as the **Windows Media Center**.
- 13 Directional arrow buttons  
Press the **▲**, **▼**, **◀**, and **▶** buttons to move the pointer on the screen.  
**OK** button  
Press to select your desired action or window option. While watching full-screen TV, press to return to the previous channel.  
Press again to switch between channels.
- 14 Muting button\*<sup>2</sup>  
Press to turn off the sound. Press again to restore the sound.
- 15 Channel/Page buttons  
Press to change or page up/down channels (no number input required).
- 16 Live TV button  
Press to view TV programs.
- 17 DVD menu button / **MENU** button  
Press to open the main menu on the playback media, such as a DVD media.

- 18** Teletext TV program mode selection button  
Press to activate/deactivate teletext TV program mode.
- 19** **ENTER** button  
Press to activate a feature or an action, such as channel selection or a return to the previous channel. (This button's actions are similar to using the **OK** button.)
- 20** **APPLICATION SELECT** button  
Press to switch among open applications. This button works the same as the **Alt+Tab** keys.
- 21** **APPLICATION CLOSE** button  
Press to close the active application window.

\*1 Pressing these buttons displays a message if your computer does not support the HDMI/VIDEO input function.

\*2 Available with the HDMI/VIDEO input function ([page 61](#)) as well.

## Using "Memory Stick"

"Memory Stick" is a compact, portable, and versatile IC recording media especially designed for exchanging and sharing digital data with compatible products, such as digital cameras, mobile phones, and other devices. Because it is removable, it can be used for external data storage.

### Before You Use "Memory Stick"

The "Memory Stick Duo" slot on your computer can accommodate the following sizes and types of media:

- "Memory Stick Duo"
- "Memory Stick PRO Duo"
- "Memory Stick PRO-HG Duo"



Your computer supports only Duo-size "Memory stick", and does not support standard-size "Memory Stick".

For the latest information about "Memory Stick", visit [memorystick.com] at <http://www.memorystick.com/en/>.

## Inserting and Removing "Memory Stick"

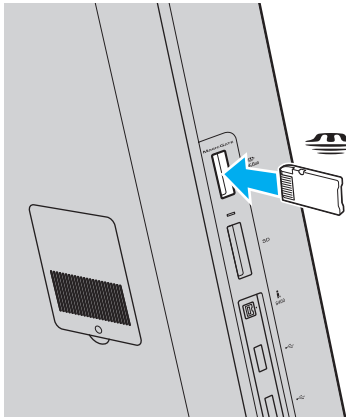
To insert "Memory Stick"

- 1 Locate the "Memory Stick Duo" slot ([page 15](#)).
- 2 Hold "Memory Stick" with the arrow pointing toward the slot.
- 3 Carefully slide "Memory Stick" into the slot until it clicks into place.



"Memory Stick" is automatically detected by your system and the contents of "Memory Stick" are displayed. If nothing appears on the desktop, click **Start, Computer**, and double-click the "Memory Stick" icon.

The "Memory Stick" icon will appear in the **Computer** window after you insert "Memory Stick" into the slot.



**!**  
Be sure to hold "Memory Stick" with the arrow pointing in the correct direction as you insert it into the slot. To avoid damaging your computer or the media, do not force "Memory Stick" into the slot if you cannot insert it smoothly.

Before using "Memory Stick Micro" ("M2"), be sure to insert it into an "M2" Duo adaptor. If you insert the media directly into the "Memory Stick Duo" slot without the adaptor, you may not be able to remove it from the slot.

## To remove "Memory Stick"

**!**  
Do not remove "Memory Stick" while the Media Access indicator light is lit. If you do, you may lose data. Large volumes of data may take time to load, so make sure the indicator light is unlit before removing "Memory Stick".

- 1** Locate the "Memory Stick Duo" slot ([page 15](#)).
- 2** Check that the Media Access indicator light is unlit.
- 3** Push in "Memory Stick" toward the computer and release.  
"Memory Stick" ejects.
- 4** Pull "Memory Stick" out of the slot.

**!**  
Be sure to remove "Memory Stick" gently, or it may pop out unexpectedly.

## Formatting "Memory Stick"

To format "Memory Stick"

"Memory Stick" has been formatted by default and is ready for use.

If you want to reformat the media with your computer, follow these steps.

! Be sure to use the device that is designed to format the media and supports "Memory Stick" when formatting the media.

Formatting "Memory Stick" erases the entire data stored on the media. Before formatting the media, make sure that it does not contain your valuable data.

Do not remove "Memory Stick" from the slot while formatting. This could cause a malfunction.

- 1 Locate the "Memory Stick Duo" slot ([page 15](#)).
- 2 Carefully slide "Memory Stick" into the slot until it clicks into place.
- 3 Click **Start** and **Computer** to open the **Computer** window.
- 4 Right-click the "Memory Stick" icon and select **Format**.
- 5 Click **Restore device defaults**.

! The size of the allocation unit and file system may change.

Do not select **NTFS** from the **File system** drop-down list as it may cause a malfunction.



The formatting process will be completed more quickly if you select **Quick Format** in **Format options**.

- 6 Click **Start**.
- 7 Follow the on-screen instructions.



It may take time to format "Memory Stick" depending on the media type.

## Notes on Using "Memory Stick"

- ❑ Your computer has been tested and found compatible with Sony branded "Memory Stick" with capacity of up to 16 GB that are available as of May 2009. However, not all "Memory Stick" are guaranteed of compatibility.
- ❑ Inserting "Memory Stick" with multiple conversion adaptors is not guaranteed of compatibility.
- ❑ "MagicGate" is the general name of the copyright protection technology developed by Sony. Use "Memory Stick" with the "MagicGate" logo to take advantage of this technology.
- ❑ Except for your personal use, it is against the copyright law to use any audio and/or image data you recorded without prior consent from the respective copyright holders. Accordingly, "Memory Stick" with such copyrighted data can be used only within the law.
- ❑ Do not insert more than one "Memory Stick" into the slot. Improper insertion of the media may damage both your computer and the media.

## Using Other Modules / Memory Cards

### Using the SD Memory Card

Your computer is equipped with an **SD** memory card slot. You can use this slot to transfer data among digital cameras, camcorders, music players, and other audio/video devices.

Before you use the SD memory card

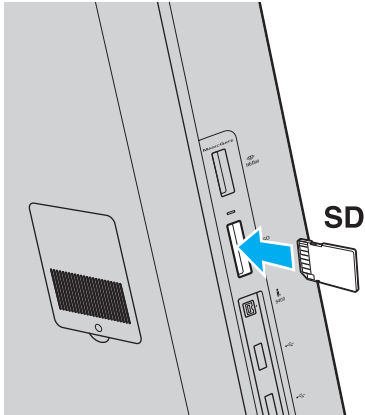
The **SD** memory card slot on your computer supports the following memory cards:

- SD memory card
- SDHC memory card

For the latest information on compatible memory cards, see **Finding More about Your VAIO Computer** ([page 5](#)) to visit the appropriate support web site.

## To insert an SD memory card

- 1 Locate the **SD** memory card slot ([page 15](#)).
- 2 Hold the SD memory card with the arrow pointing toward the slot.
- 3 Carefully slide the SD memory card into the slot until it clicks into place.  
Do not force the card into the slot.



If the SD memory card does not go into the slot easily, remove it gently and verify you are inserting it in the proper direction.

The SD memory card icon will appear in the **Computer** window after you insert the card into the slot.

## To remove an SD memory card

- 1 Locate the **SD** memory card slot ([page 15](#)).
- 2 Check that the Media Access indicator light is unlit.
- 3 Push in the SD memory card toward the computer and release.  
The SD memory card ejects.
- 4 Pull the SD memory card out of the slot.

## Notes on Using Memory Cards

### General notes on using the memory card

- ❑ Be sure to use memory cards that are compliant with the standards supported by your computer.
- ❑ Be sure to hold the memory card with the arrow pointing in the correct direction as you insert it into the slot. To avoid damaging your computer or the media, do not force the memory card into the slot if you cannot insert it smoothly.
- ❑ Use care when inserting or removing the memory card from the slot. Do not force it in or out of the slot.
- ❑ Do not remove the memory card while the media access indicator light is lit. If you do, you may lose data.
- ❑ Do not attempt to insert a memory card or memory card adaptor of a different type into the memory card slot. An incompatible memory card or memory card adaptor may cause difficulty in removing from the slot and can cause damage to your computer.

### Notes on using the SD memory card

- ❑ Your computer has been tested and found compatible only with major memory cards available as of May 2009. However, not all memory cards that meet the same specifications as the compatible media are guaranteed of compatibility.
- ❑ SD memory cards with capacity of up to 2 GB and SDHC memory cards with capacity of up to 32 GB have been tested and found compatible with your computer.
- ❑ The SD memory card slot on your computer does not support the high-speed data transfer feature of the SD memory card and the SDHC memory card.

## Using the Internet

Before using the Internet, you need to sign up with an Internet Service Provider (ISP) and set up devices required for connecting your computer to the Internet.

The following types of Internet connection services may be available from your ISP:

- Fiber to the Home (FTTH)
- Digital Subscriber Line (DSL)
- Cable modem
- Satellite
- Dial-up

For detailed information on devices required for Internet access and how to connect your computer to the Internet, ask your ISP.



To connect your computer to the Internet using the wireless LAN function, you need to set up the wireless LAN network. See **Using the Wireless LAN (page 82)** for more information.

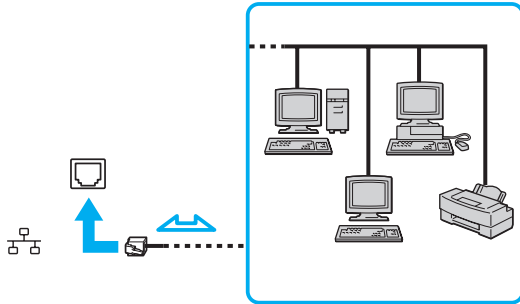


When you connect your computer to the Internet, be sure to take appropriate security measures to protect the computer against online threats.

Depending on the service contract with your ISP, you may need to connect an external modem device, for example a USB telephone modem, a DSL modem, or a cable modem, to your computer to connect to the Internet. For the detailed instructions on connection setups and modem configuration, see the manual that came with your modem.

## Using the Network (LAN)

You can connect your computer to 1000BASE-T/100BASE-TX/10BASE-T type networks with a LAN cable. Connect one end of a LAN cable (not supplied) to the network (LAN) port on the back of the computer and the other end to your network. For detailed settings and devices required for LAN access, ask your network administrator.



You can connect your computer to any network without changing the default settings.



Do not plug a telephone cable into the network (LAN) port on your computer.

If the network (LAN) port is connected to one of the telephone lines mentioned below, high electric current to the port may cause damage, overheating, or fire.

- Home (intercom speakerphone) or business-use telephone lines (multi-line business telephone)
- Public telephone subscriber line
- Private branch exchange (PBX)

## Using the Wireless LAN

Using the Wireless LAN (WLAN), all your digital devices with the built-in WLAN function communicate freely with each other through a network. A WLAN is a network in which a user can connect to a Local Area Network (LAN) through a wireless (radio) connection.

You can communicate without an access point, which means that you can communicate with a limited number of computers (ad-hoc). Or you can communicate through an access point, which allows you to create a full infrastructure network.

### To use the wireless LAN function

! The IEEE 802.11a standard, using the 5 GHz band, and the IEEE 802.11n draft standard, using the 2.4 GHz or 5 GHz band, are not available on ad-hoc networks.

To use the wireless LAN function, you first need to set up the wireless LAN function.

Use the **SmartWi Connection Utility** to set up the wireless LAN function. See the **SmartWi Connection Utility Help** for more information.

To access this on-screen guide:

- 1 Click **Start, All Programs**, and **SmartWi Connection Utility**.
- 2 Click **SmartWi Connection Utility Help**.



In some countries, using WLAN products may be restricted by the local regulations (e.g. limited number of channels). Therefore, before activating the WLAN function, read the **Safety Information** carefully.

WLAN uses the IEEE 802.11a<sup>\*</sup>/b/g standard or the IEEE 802.11n<sup>\*</sup> draft standard, which specifies the type of technology used. The standard includes the encryption methods: Wired Equivalent Privacy (WEP), which is a security protocol, Wi-Fi Protected Access 2 (WPA2), and Wi-Fi Protected Access (WPA). Proposed jointly by the IEEE and Wi-Fi Alliance, both WPA2 and WPA are specifications of standards based on interoperable security enhancements that increase the level of data protection and access control for existing Wi-Fi networks. WPA is designed to be forward compatible with the IEEE 802.11i specification. It utilizes the enhanced data encryption Temporal Key Integrity Protocol (TKIP) in addition to user authentication using 802.1X and Extensible Authentication Protocol (EAP). Data encryption protects the vulnerable wireless link between clients and access points. Besides that, there are other typical LAN security mechanisms to ensure privacy, such as: password protection, end-to-end encryption, virtual private networks, and authentication. WPA2, the second generation of WPA, provides stronger data protection and network access control and is also designed to secure all versions of 802.11 devices, including 802.11b, 802.11a, 802.11g, and 802.11n draft standard, multi-band and multi-mode. In addition, based on the ratified IEEE 802.11i standard, WPA2 provides government grade security by implementing the National Institute of Standards and Technology (NIST) FIPS 140-2 compliant AES encryption algorithm and 802.1X-based authentication. WPA2 is backward compatible with WPA.

\* See the specifications to find out about the configuration of your computer.

The IEEE 802.11b/g standard is a wireless LAN standard, using the 2.4 GHz band. The IEEE 802.11g standard provides higher-speed communications than the IEEE 802.11b standard.

The IEEE 802.11a standard is a wireless LAN standard, using the 5 GHz band.

The IEEE 802.11n draft standard is a wireless LAN standard, using the 2.4 GHz or 5 GHz band.

Wireless LAN devices using the 2.4 GHz band cannot communicate with devices using the 5 GHz band because the frequencies are different.

The 2.4 GHz band used by wireless LAN compatible devices is also used by other various devices. Although technologies to minimize interference from other devices that use the same band are employed on wireless LAN compatible devices, such interference may cause lower communication speed, narrower communication range, or broken wireless connections.

The communication speed varies depending on the distance between communication devices, existence of obstacles between such devices, the device configuration, the radio conditions, and the software in use. In addition, communications may be cut off depending on the radio conditions.

The communication range varies depending on the actual distance between communication devices, existence of obstacles between such devices, the radio conditions, the ambient environment that includes existence of walls and materials of such walls, and the software in use.

Actual communication speed may not be as fast as the one displayed on your computer.

Deploying IEEE 802.11b and IEEE 802.11g products on the same wireless network may reduce the communication speed due to radio interference. Taking this into consideration, the IEEE 802.11g products are designed to reduce the communication speed to ensure communications with IEEE 802.11b products. When the communication speed is not as fast as expected, changing the wireless channel on the access point may increase the communication speed.

## Using the Bluetooth Function

You can establish wireless communications between your computer and other Bluetooth devices such as another computer or a mobile phone. You can transfer data between these devices without cables at a range of up to 33 feet (10 meters) in an open area.

To use the Bluetooth function

To use the Bluetooth function, you first need to set up the Bluetooth function.

Use the **SmartWi Connection Utility** to set up the Bluetooth function. See the **SmartWi Connection Utility Help** for more information.

To access this on-screen guide:

- 1 Click **Start, All Programs**, and **SmartWi Connection Utility**.
- 2 Click **SmartWi Connection Utility Help**.

## Bluetooth Security

The Bluetooth wireless technology has an authentication function, which allows you to determine with whom you choose to communicate. With the authentication function, you can prevent any anonymous Bluetooth devices from accessing your computer.

The first time two Bluetooth devices communicate, a common passkey (a password required for authentication) should be determined for both devices to be registered. Once a device is registered, there is no need to re-enter the passkey.



The passkey can be different each time, but must be the same at both ends.

For certain devices, such as a mouse, no passkey can be entered.

## Communicating with Another Bluetooth Device

You can connect your computer to a Bluetooth device such as another computer, a mobile phone, a PDA, a headset, a mouse, or a digital camera without the use of any cables.



To communicate with another Bluetooth device

To communicate with another Bluetooth device, you first need to set up the Bluetooth function. For setting up and using the Bluetooth function, search **Windows Help and Support** for Bluetooth information.

## Notes on Using the Bluetooth Function

- ❑ The data transfer rate varies, depending on the following conditions:
  - ❑ Obstacles, such as walls, located between devices
  - ❑ Distance between devices
  - ❑ Material used in walls
  - ❑ Proximity to microwaves and cordless telephones
  - ❑ Radio frequency interference and other environmental conditions
  - ❑ Device configuration
  - ❑ Type of software application
  - ❑ Type of operating system
  - ❑ Use of both wireless LAN and Bluetooth functions at the same time on your computer
  - ❑ Size of file being exchanged
- ❑ Large files may occasionally be corrupted during continuous transfer due to limitations of the Bluetooth standard and electromagnetic interference in the environment.
- ❑ All Bluetooth devices must be certified to make sure that the applicable standard requirements are maintained. Even if standards are met, individual device performance, specifications, and operation procedures can vary. Data exchange may not be possible in all situations.
- ❑ Video and audio may not be synchronized if you play videos on your computer with audio output from a connected Bluetooth device. This is a frequent occurrence with Bluetooth technology and is not a malfunction.
- ❑ The 2.4 GHz band, with which Bluetooth devices or wireless LAN devices work, is used by various devices. Bluetooth devices use the technology to minimize the interference from other devices that use the same wave length. Simultaneous use of the Bluetooth function and wireless communication devices, however, may cause radio interference and result in reduced communication speeds and distances than the standard values.

- ❑ The Bluetooth function may not work with other devices, depending on the manufacturer or the software version employed by the manufacturer.
- ❑ Connecting multiple Bluetooth devices to your computer may cause channel congestion, resulting in poor performance of the devices. This is normal with Bluetooth technology and is not a malfunction.

# Using Peripheral Devices

You can add functionality to your VAIO computer by using the various ports on the computer.

- ❑ **Connecting External Speakers or Headphones** ([page 91](#))
- ❑ **Connecting an External Microphone** ([page 92](#))
- ❑ **Connecting a USB Device** ([page 93](#))
- ❑ **Connecting an i.LINK Device** ([page 95](#))

## Connecting External Speakers or Headphones

You can connect external sound output devices (not supplied), such as speakers or headphones, to your computer.

Since your computer is capable of outputting digital signals through the **OPTICAL OUT** port, you can connect an S/PDIF device such as digital headphones or an audio/video amplifier to the port and enhance the sound quality of your computer. For more information, see the manual that came with your S/PDIF device.

! To hear sound from the S/PDIF device connected to the **OPTICAL OUT** port, you need to change the sound output device. For the detailed instructions, see [How do I change the sound output device? \(page 154\)](#).

### To connect external speakers

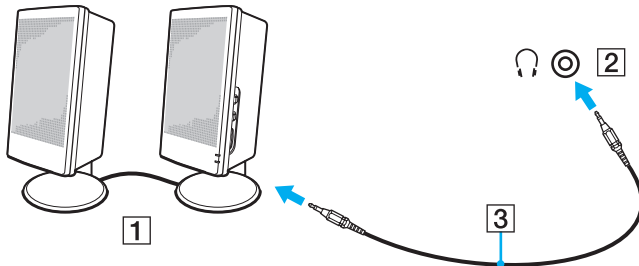


Make sure your speakers are designed for computer use.



Turn down the volume of the speakers before you turn them on.


Connect external speakers (1) to the headphones jack (2) with a speaker cable (3) (not supplied).

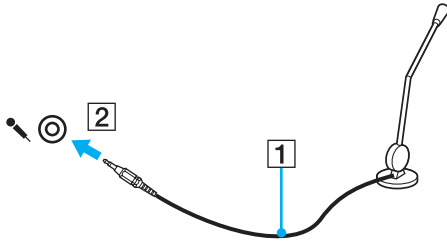


## Connecting an External Microphone

You can connect an external microphone (not supplied) to your computer.

To connect an external microphone

Plug the microphone cable (1) into the microphone jack (2) .



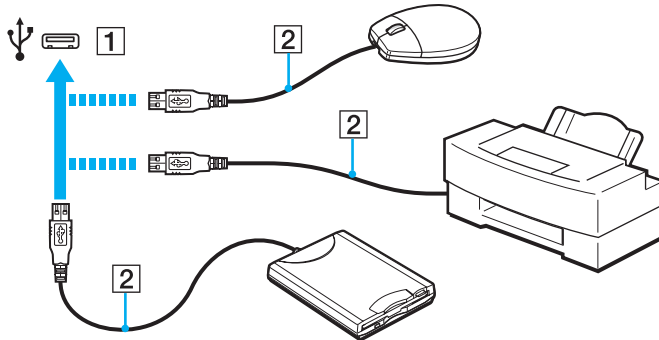
Make sure your microphone is designed for computer use.

## Connecting a USB Device

You can connect a Universal Serial Bus (USB) device to your computer, such as a mouse, floppy disk drive, speaker, and printer.

To connect a USB device

- 1 Choose the USB port (1) you prefer to use.
- 2 Plug the USB device cable (2) into the USB port.



## Notes on connecting a USB device

- ❑ You may need to install the driver software supplied with your USB device before use. See the manual that came with the USB device for more information.
- ❑ Be sure to use a USB printer compatible with your version of Windows to print documents.
- ❑ For information on how to remove a USB device, see the manual that came with the device.
- ❑ To protect your computer and/or USB devices from damage, observe the following:
  - ❑ When moving the computer with USB devices connected, avoid exposing the USB ports to shock or impact.
  - ❑ Do not put the computer into a bag or carrying case when it has USB devices connected.

## Connecting an i.LINK Device

Your computer is equipped with an i.LINK port which you can use to connect an i.LINK device, such as a digital video camcorder.



i.LINK is a trademark of Sony Corporation used only to designate that a product contains an IEEE 1394 connection. The procedure to establish an i.LINK connection may vary, depending on a software application, an operating system, and a compatible i.LINK device. Not all products with an i.LINK connection can communicate with each other. See the manual that came with your compatible i.LINK device for more information on operating conditions and proper connection. Before connecting compatible i.LINK PC peripherals to your system, such as a CD-RW or hard disk drive, confirm their operating system compatibility and required operating conditions.

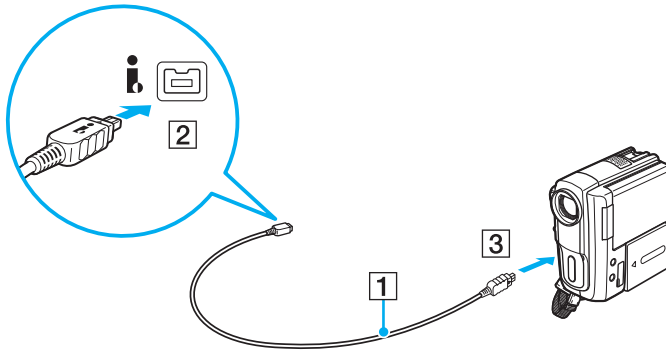
### Notes on connecting i.LINK devices

- ❑ The i.LINK port on your computer does not supply power to an external device. If the external device requires external power, be sure to connect it to a power source.
- ❑ The i.LINK port supports transfer rates up to 400 Mbps. However, the actual transfer rate depends on the transfer rate of the external device.
- ❑ The optional i.LINK cables may not be available in some countries or areas.
- ❑ An i.LINK connection with other compatible devices is not fully guaranteed.
- ❑ The i.LINK connection may not be available depending on the software applications, operating system, and i.LINK-compatible devices you use. See the manual that came with your software for more information.
- ❑ Check the working conditions and operating system compatibility of i.LINK-compatible PC peripherals (for example, an HDD or a CD-RW drive) before you connect them to your computer.

## Connecting a Digital Video Camcorder

To connect a digital video camcorder

Plug one end of an i.LINK cable (1) (not supplied) into the i.LINK port (2) on the computer and the other end into the DV In/Out port (3) on the digital video camcorder.



 The connection procedure varies depending on your compatible i.LINK device. See the manual that came with the device for more information.

You cannot access the contents of "Memory Stick" in the digital video camcorder via an i.LINK connection.

## Customizing Your VAIO Computer

This section briefly describes how to change the main settings of your VAIO computer. Among other things, you will learn how to use and customize the look of your Sony software and utilities.

- ❑ **Setting the Password** ([page 98](#))
- ❑ **Using the VAIO Control Center** ([page 103](#))

## Setting the Password

Use one of the BIOS functions to set the password.

Once you have set the password, you will be prompted to enter the password after the VAIO logo appears to start your computer. The power-on password allows you to protect your computer from unauthorized access.

### Adding the Power-on Password

The power-on password is provided to protect your computer from unauthorized access.

There are two types of the power-on passwords: the machine password and the user password. The machine password is provided for users with administrative rights on the computer to change all the setup options in the BIOS setup screen, as well as to start the computer. The user password is provided for the standard users to allow for changing some of the BIOS setup options, as well as starting the computer. To set the user password, you must first set the machine password.

**!** Once you have set the power-on password, you cannot start your computer without entering the password. Be sure not to forget the password. Write down your password and keep it safe and private from other people.

If you forget the power-on password and need assistance to reset it, a password reset fee will be charged, and your computer may need to be sent in for service to reset the password.

## To add the power-on password (machine password)

- 1 Turn on the computer.
- 2 Press the **F2** key when the VAIO logo appears.  
The BIOS setup screen appears. If not, restart the computer and press the **F2** key several times when the VAIO logo appears.
- 3 Press the **←** or **→** key to select **Security** to display the **Security** tab, select **Set Machine Password**, and then press the **Enter** key.
- 4 On the password entry screen, enter the password twice and press the **Enter** key.  
The password can be up to 32 alphanumeric characters (including spaces) long.
- 5 Select **Password when Power On** under **Security** and press the **Enter** key.
- 6 Change the setting from **Disabled** to **Enabled**.
- 7 Press the **←** or **→** key to select **Exit**, select **Exit Setup**, and then press the **Enter** key.  
At the confirmation prompt, press the **Enter** key.

## To add the power-on password (user password)

! Make sure you set the machine password before setting the user password.

- 1 Turn on the computer.
- 2 Press the **F2** key when the VAIO logo appears.  
The BIOS setup screen appears. If not, restart the computer and press the **F2** key several times when the VAIO logo appears.
- 3 Enter the machine password and press the **Enter** key.
- 4 Press the **←** or **→** key to select **Security** to display the **Security** tab, select **Set User Password**, and then press the **Enter** key.
- 5 On the password entry screen, enter the password twice and press the **Enter** key.  
The password can be up to 32 alphanumeric characters (including spaces) long.
- 6 Press the **←** or **→** key to select **Exit**, select **Exit Setup**, and then press the **Enter** key.  
At the confirmation prompt, press the **Enter** key.

## Changing/Removing the Power-on Password

To change or remove the power-on password (machine password)

- 1 Turn on the computer.
- 2 Press the **F2** key when the VAIO logo appears.  
The BIOS setup screen appears. If not, restart the computer and press the **F2** key several times when the VAIO logo appears.
- 3 Enter the machine password and press the **Enter** key.
- 4 Press the **←** or **→** key to select **Security** to display the **Security** tab, select **Set Machine Password**, and then press the **Enter** key.
- 5 On the password entry screen, enter the current password once and a new password twice, and then press the **Enter** key.  
To remove the password, leave the **Enter New Password** and **Confirm New Password** fields blank and press the **Enter** key.
- 6 Press the **←** or **→** key to select **Exit**, select **Exit Setup**, and then press the **Enter** key.  
At the confirmation prompt, press the **Enter** key.

## To change or remove the power-on password (user password)

- 1 Turn on the computer.
- 2 Press the **F2** key when the VAIO logo appears.  
The BIOS setup screen appears. If not, restart the computer and press the **F2** key several times when the VAIO logo appears.
- 3 Enter the user password and press the **Enter** key.
- 4 Press the **←** or **→** key to select **Security** to display the **Security** tab, select **Set User Password**, and then press the **Enter** key.
- 5 On the password entry screen, enter the current password once and a new password twice, and then press the **Enter** key.  
To remove the password, leave the **Enter New Password** and **Confirm New Password** fields blank and press the **Enter** key.
- 6 Press the **←** or **→** key to select **Exit**, select **Exit Setup**, and then press the **Enter** key.  
At the confirmation prompt, press the **Enter** key.

## Using the VAIO Control Center

The **VAIO Control Center** utility allows you to access system information and to specify preferences for system behavior.

To use the VAIO Control Center

- 1 Click **Start**, **All Programs**, and **VAIO Control Center**.
- 2 Select your desired control item and change the settings.
- 3 Once finished, click **OK**.  
The setting of the desired item has been changed.



For more information about each option, see the help file included with the **VAIO Control Center**.

Some of the control items will not be visible if you open the **VAIO Control Center** as a standard user.

## Upgrading Your VAIO Computer

Your VAIO computer and memory modules use high precision components and electronic connectors technology. To avoid invalidation of the warranty during your product warranty period, we recommend that:

- You should contact your dealer to install a new memory module.
- You should not install it yourself, if you are not familiar with upgrading memory on a computer.
- You should not touch the connectors or open the memory module compartment cover.

For assistance, contact an authorized Sony Service Center. To find the nearest center or agent, see **Finding More about Your VAIO Computer** (page 5).



The type of module and the amount of memory installed on your computer may differ depending on the model you purchased. See the specifications to find out about the configuration of your computer.

## Adding and Removing Memory

If you want to expand the functionality of your computer, you can increase the amount of memory by installing optional memory modules. Before you upgrade your computer's memory, read the notes and procedures in the following pages.

### Notes on adding/removing memory modules

- ❑ Be sure to place your computer on a flat surface before adding or removing memory modules.
- ❑ Be careful when changing memory. Improper installation of memory modules may cause damage to your system. This damage may void your manufacturer's warranty.
- ❑ Only use memory modules that are compatible with your computer. If a memory module is not detected by the computer or the Windows operating system becomes unstable, contact the sales dealer or the manufacturer of your memory module.
- ❑ Electrostatic discharge (ESD) can damage electronic components. Before touching a memory module, ensure the following:
  - ❑ The procedures described in this document assume user familiarity with the general terminology associated with personal computers and with the safety practice and regulatory compliance requirements for using and modifying electronic equipment.
  - ❑ Turn off your computer and disconnect it from the power cord and from any telecommunication links, networks, or modems before you remove any cover or panel from the computer. Failure to do so may result in personal injury or equipment damage.
  - ❑ ESD can damage memory modules and other components. Install the memory module only at an ESD workstation. If such a station is not available, do not work in a carpeted area, and do not handle materials that produce or hold static electricity (cellophane wrappers, for example). Ground yourself by maintaining contact with an unpainted metal portion of the chassis while performing the procedure.
  - ❑ Do not open the memory module package before you are ready to change the module. The package protects the module from ESD.

- Use the special bag supplied with the memory module or wrap the module in aluminum foil to protect it from ESD.
- Introducing any liquids, foreign substances, or objects into the memory module slots or other internal components of your computer will result in damage to the computer and any repair costs will not be covered by the warranty.
- Do not place the memory module in a location subject to:
  - Heat sources such as radiators or air ducts
  - Direct sunlight
  - Excessive dust
  - Mechanical vibration or shock
  - Strong magnets or speakers that are not magnetically shielded
  - Ambient temperature of more than 95°F (35°C) or less than 41°F (5°C)
  - High humidity
- Handle the memory module with care. To avoid injuries to your hands and fingers, do not touch the edges of the components and circuit boards inside your computer.

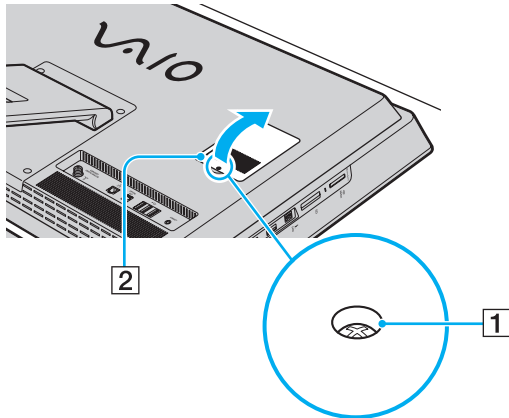
## Removing and Installing a Memory Module

To change or add a memory module

- 1 Shut down the computer, turn off all peripheral devices, and disconnect the power cord and the peripheral devices from the power source.
- 2 Gently face down your computer on a flat surface and wait about an hour until the computer cools down.

! When facing down your computer, be sure to place it on a soft cloth to avoid damage to the screen frame.

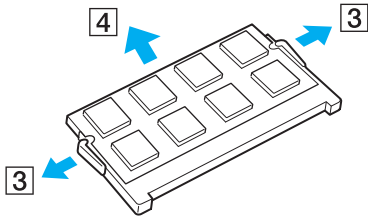
- 3 Unscrew the screw (1) and remove the memory module compartment cover (2).



- 4 Touch a metal object to discharge static electricity.

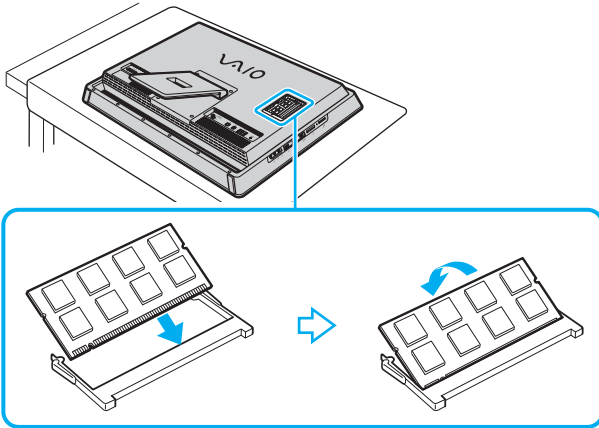
5 Remove the currently installed memory module as follows:

- ❑ Pull the latches in the direction of the arrows (3).  
The memory module is released.
- ❑ Make sure that the memory module tilts up and then pull it out in the direction of the arrow (4).



6 Remove the new memory module from its packaging.

- 7 Slide the memory module into the memory module slot and push it in until it clicks into place.



**!** Do not touch any other components on the motherboard.

If you want to install only one memory module, be sure to use the lower slot.

Be sure to insert the connector edge of the memory module into the slot while aligning the notch on the module with the small projection in the open slot. Do not force the memory module into the slot in a wrong orientation, as it may cause damage to the slot and the module.

- 8 Replace the memory module compartment cover and tighten the screw.
- 9 Connect the power cord and the peripheral devices to the computer, and then plug them to the power source.
- 10 Turn on all peripheral devices and then the computer.

## Viewing the Amount of Memory

To view the amount of memory

- 1 Turn on the computer.
- 2 Click **Start, All Programs,** and **VAIO Control Center.**
- 3 Click **System Information** and **System Information.**

You can view the amount of system memory in the right pane. If the additional memory does not appear, repeat the installation procedure and restart the computer.

# Precautions

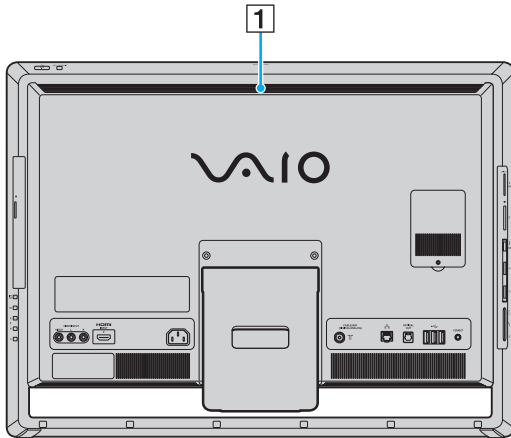
This section describes safety guidelines and precautions to help you protect your VAIO computer from potential damage.

- ❑ **Safety Information** ([page 112](#))
- ❑ **Care and Maintenance Information** ([page 114](#))
- ❑ **Handling Your Computer** ([page 115](#))
- ❑ **Handling the LCD Screen/Touch Screen** ([page 117](#))
- ❑ **Using the Power Source** ([page 118](#))
- ❑ **Handling the Built-in Camera** ([page 119](#))
- ❑ **Handling Discs** ([page 120](#))
- ❑ **Handling "Memory Stick"** ([page 121](#))
- ❑ **Handling the Built-in Storage Device** ([page 122](#))

# Safety Information

## Computer

- ❑ Use your computer on a solid, stable surface.
- ❑ Do not place your computer near draperies that may block its air vents.
- ❑ When holding your computer, be sure to wait until it cools down. The back of your computer may be extremely hot around the air exhaust vent (1).



- ❑ Do not grasp the prop-up stand or the bottom chassis frame to lift your computer as the stand or the frame may break and cause the main unit to fall, resulting in damage to the computer or personal injuries.
- ❑ Use only specified peripheral equipment and interface cables.

## Power Source

- ❑ Do not place heavy objects on the power cord, or this could cause a fire.
- ❑ To disconnect the cord, pull it out by holding the plug. Never pull the cord itself.
- ❑ Unplug your computer from the AC outlet if you are not planning to use the computer for an extended period of time.
- ❑ Make sure that the AC outlet is easily accessible.

## Headphones

**Preventing hearing damage** – Avoid using headphones at high volume. Hearing experts advise against continuous, loud and extended play. If you experience a ringing in your ears, reduce the volume or discontinue use.

## "Memory Stick"

Keep "Memory Stick" and "Memory Stick" adaptors out of reach of children. There is a risk of swallowing them.

## Care and Maintenance Information

### Computer

- ❑ Clean the cabinet with a soft, dry or lightly moistened cloth with a mild detergent solution. Do not use an abrasive pad, scouring powder, or solvent such as alcohol or benzine, as these may damage the finish of your computer.
- ❑ Make sure you unplug the power cord before cleaning your computer.

### LCD Screen/Touch Screen

Use a soft, dry cloth to wipe the surface of the LCD screen/touch screen. Rubbing the surface could damage the screen.

### Built-in Camera

Clean the lens protection cover of the built-in camera with a blower brush or a soft brush. If the cover is extremely dirty, wipe it off with a soft dry cloth. Do not rub the cover, as it is sensitive to pressure.

### Discs

- ❑ Proper care of the disc is essential to its continuous reliability. Do not use solvents (such as benzine, thinner, alcohol, commercially available cleaners, or anti-static spray) which may cause damage to the disc.
- ❑ For normal cleaning, hold the disc by its edges and use a soft cloth to wipe the surface from the center out.
- ❑ If the disc is badly soiled, moisten a soft cloth with water, wring it out well, and use it to wipe the surface of the disc from the center out. Wipe off any remaining moisture with a dry soft cloth.

## Handling Your Computer

- ❑ If you drop a solid object or any liquid onto your computer, shut down the computer and then unplug it. You may want to have the computer checked by qualified personnel before operating it again.
- ❑ Do not drop your computer.
- ❑ Do not place your computer in a location subject to:
  - ❑ Heat sources, such as radiators or air ducts
  - ❑ Direct sunlight
  - ❑ Excessive dust
  - ❑ Moisture or rain
  - ❑ Mechanical vibration or shock
  - ❑ Strong magnets or speakers that are not magnetically shielded
  - ❑ Ambient temperature of more than 95°F (35°C) or less than 41°F (5°C)
  - ❑ High humidity
- ❑ Do not place electronic equipment near your computer. The electromagnetic field of the equipment may cause the computer to malfunction.
- ❑ Your computer uses high-frequency radio signals and may cause interference to radio or TV reception. If this occurs, relocate the computer a suitable distance away from the set.
- ❑ Do not use cut or damaged connection cables.
- ❑ If your computer is brought directly from a cold location to a warm one, moisture may condense inside the computer. In such a case, allow at least one hour before turning on the computer. If any problems occur, unplug the computer and contact an authorized Sony Service Center. To find the nearest center or agent, see **Finding More about Your VAIO Computer (page 5)**.

- ❑ To avoid losing data when your computer is damaged, back up your data regularly.
- ❑ To lift or move your computer, grasp the main unit on the sides with both hands from behind the computer to avoid any damage to the LCD screen/touch screen. There is a risk of scratching the LCD screen/touch screen, for example with your waist belt buckle, if you hold your computer from its front.

## Handling the LCD Screen/Touch Screen

- ❑ Due to the mechanical design of your computer's LCD screen/touch screen, some areas of the screen surface may become warm while you are using the computer for an extended period of time. This is normal and does not indicate a malfunction.
- ❑ Do not exert pressure on the LCD screen/touch screen surface in any way. The LCD screen/touch screen is made of reinforced glass to implement high durability but is not 100% unbreakable.
- ❑ Do not exert pressure on the LCD screen/touch screen frame. This may cause lower touch sensitivity or malfunctions.
- ❑ Be sure to use your finger(s) for touch works. Using a thin or thick object for touch works may result in an unintentional operation as well as unwanted scratches on the LCD screen/touch screen surface.
- ❑ Keep the LCD screen/touch screen, especially the frame sill, clean for good touch sensitivity. When cleaning the LCD screen/touch screen, be sure to use a soft, dry cloth to gently wipe its surface and the screen frame.
- ❑ Do not use or leave the LCD screen/touch screen under high-intensity light, for example direct sunlight, to avoid malfunctions or damage.
- ❑ Using your computer in low temperature conditions may produce a residual image on the LCD screen/touch screen. This is not a malfunction. When the computer returns to normal temperature, the screen returns to normal.
- ❑ A residual image may appear on the LCD screen/touch screen if the same image is displayed for an extended period of time. The residual image disappears after a while. You can use a screen saver to prevent residual images.
- ❑ The LCD screen/touch screen is manufactured using high-precision technology. You may, however, see tiny black points and/or bright points (red, blue, or green) that continuously appear on the screen. This is a normal result of the manufacturing process and does not indicate a malfunction.

## Using the Power Source



See the specifications to find out about the configuration of your computer.

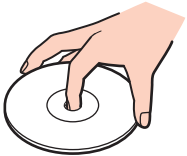
- ❑ Do not share the AC outlet with other power-consuming equipment, such as a photocopier or a shredder.
- ❑ You can purchase a power strip with a surge protector. This device helps prevent damage to your computer caused by sudden power surges, in an electrical storm, for example.
- ❑ Use the power cord supplied with your computer or genuine Sony products. Do not use any other power cord as it may cause a malfunction.

## Handling the Built-in Camera

- ❑ Do not touch the lens protection cover of the built-in camera, as it may cause scratches on the cover and such scratches will appear on the captured images.
- ❑ Do not let the direct sunlight get into the lens of the built-in camera regardless of your computer's power state, as it may cause the camera to malfunction.
- ❑ The built-in camera is disabled while videos or still images are imported from an i.LINK-compatible device connected to the i.LINK port.

## Handling Discs

- ❑ Fingerprints and dust on the surface of a disc may cause read errors. Be sure to hold the disc by its edges and central hole, as shown below:



- ❑ Never affix an adhesive label to a disc. This will affect the use of the disc and may result in irreparable damage.

## Handling "Memory Stick"

- ❑ Do not touch the "Memory Stick" connector with your finger or metallic objects.
- ❑ Use only the adhesive label supplied with "Memory Stick" as a label.
- ❑ Do not bend, drop, or expose "Memory Stick".
- ❑ Do not disassemble or modify "Memory Stick".
- ❑ Do not let "Memory Stick" get wet.
- ❑ Do not use or store "Memory Stick" in a location subject to:
  - ❑ Static electricity
  - ❑ Electrical noise
  - ❑ Extremely high temperatures, such as in a car parked in the sun
  - ❑ Direct sunlight
  - ❑ High humidity
  - ❑ Corrosive substances
- ❑ Use the storage case supplied with "Memory Stick".
- ❑ Be sure to make a backup copy of your valuable data.
- ❑ When using "Memory Stick Duo", do not use a fine-tipped pen to write on the label adhered to "Memory Stick Duo". Exerting pressure on the media may damage internal components.

## Handling the Built-in Storage Device

The built-in storage device (hard disk drive or solid state drive) has a high storage density and reads or writes data in a short time. However, it can be easily damaged if improperly used. If the built-in storage device is damaged, the data cannot be restored. To prevent losing data, you should be careful when handling your computer.



Features and options in this section may not be available on your computer.

See the specifications to find out about the configuration of your computer.

### To avoid damaging your hard disk drive

- Do not subject your computer to sudden movements.
- Keep your computer away from magnets.
- Do not place your computer in a location subject to mechanical vibration or in an unstable position.
- Do not move your computer while the power is on.
- Do not turn off the power or restart your computer while reading or writing data to the hard disk drive.
- Do not use your computer in a place subject to extreme changes in temperature.
- Do not remove the hard disk drive from your computer.

### To avoid damaging your solid state drive

- Do not turn off the power or restart your computer while reading or writing data to the solid state drive.
- Do not remove the solid state drive from your computer.

# Troubleshooting

This section describes how to solve common problems you might encounter when using your VAIO computer. Many problems have simple solutions. Try these suggestions before visiting the Sony online support web site at the following URLs:

- ❑ For customers in USA  
<http://esupport.sony.com/EN/VAIO/>
- ❑ For customers in Canada  
<http://sony.ca/support/>
- ❑ For customers in Spanish-speaking Latin American countries or areas  
<http://esupport.sony.com/ES/VAIO/LA>
- ❑ For customers in Brazil  
<http://esupport.sony.com/BR/>



Features and options in this section may not be available on your computer.

- ❑ **Computer (page 125)**
- ❑ **System Security (page 131)**
- ❑ **Built-in Camera (page 132)**
- ❑ **Networking (page 134)**
- ❑ **Bluetooth Technology (page 137)**
- ❑ **Optical Discs (page 140)**
- ❑ **Display (page 144)**
- ❑ **Printing (page 146)**



- ❑ **Microphone** ([page 147](#))
- ❑ **Mouse** ([page 148](#))
- ❑ **Speakers** ([page 150](#))
- ❑ **Touch Screen** ([page 151](#))
- ❑ **Keyboard** ([page 152](#))
- ❑ **Floppy Disks** ([page 153](#))
- ❑ **Audio/Video** ([page 154](#))
- ❑ **HDMI/VIDEO Input Function** ([page 157](#))
- ❑ **"Memory Stick"** ([page 159](#))
- ❑ **Peripherals** ([page 160](#))

## Computer

### What should I do if my computer does not start?

- ❑ Make sure your computer is securely plugged into a power source and turned on and the power indicator light shows the power is on.
- ❑ Disconnect all connected USB devices (if any), and then restart your computer.
- ❑ Remove any extra memory modules you may have installed since purchase, and then restart your computer.
- ❑ If your computer is plugged into a power strip or an uninterruptible power supply (UPS), make sure the power strip or UPS is plugged into a power source and turned on.
- ❑ If the orange **DISPLAY OFF** indicator light is lit, press the **DISPLAY OFF** button.
- ❑ Make sure the brightness and contrast controls are adjusted correctly.
- ❑ Make sure the computer input is selected as the audio/video input source. To change the display input, press the **INPUT SELECT** button on the computer or the remote commander (if supplied).
- ❑ Unplug the power cord. Wait three to five minutes. Plug the power cord again and press the power button to turn on your computer.
- ❑ Condensation may cause your computer to malfunction. If this occurs, do not use the computer for at least one hour.
- ❑ Check that you are using the supplied Sony power cord. For your safety, use only the genuine Sony power cord, which is supplied by Sony for your VAIO computer.
- ❑ Make sure your computer is not in Sleep mode by pressing the power button on the computer or the sleep button on the wireless keyboard or the remote commander (if supplied). If you press and hold the power button for more than four seconds, your computer will turn off automatically.

## What should I do if the green power indicator light turns on but my screen remains blank?

- ❑ If the orange **DISPLAY OFF** indicator light is lit, press the **DISPLAY OFF** button.
- ❑ Make sure the computer input is selected as the audio/video input source. To change the display input, press the **INPUT SELECT** button on the computer or the remote commander (if supplied).
- ❑ Press the **Alt+F4** keys several times to close the application window. An application error may have occurred.
- ❑ Press the **Ctrl+Alt+Delete** keys and click the arrow  next to the **Shut down**  button and **Restart**.
- ❑ Press and hold the power button for more than four seconds to shut down your computer. Unplug the power cord and leave the computer for about five minutes. Then, plug the power cord and turn on the computer again.

! Make sure that the batteries of your wireless keyboard and remote commander (if supplied) are properly installed and not running out of power.

Turning off your computer with the **Ctrl+Alt+Delete** keys or the power button may cause loss of unsaved data.

## What should I do if my computer or software stops responding?

- ❑ If your computer stops responding while a software application is running, press the **Alt+F4** keys to close the application window.
- ❑ If the **Alt+F4** keys do not work, click **Start** and the **Shut down** button to turn off your computer.
- ❑ If your computer does not turn off, press the **Ctrl+Alt+Delete** keys and click the **Shut down** button. If the **Windows Security** window appears, click **Shut Down**.
- ❑ If this procedure does not work, press and hold the power button until the computer turns off.  
  
**!**  
Turning off your computer with the **Ctrl+Alt+Delete** keys or the power button may cause loss of unsaved data.
- ❑ Unplug the power cord. Wait three to five minutes. Plug the power cord again and press the power button to turn on your computer.
- ❑ Try reinstalling the software.
- ❑ Contact the software publisher or designated provider for technical support.

## Why doesn't my computer enter Sleep mode?

Your computer may become unstable if the operating mode is changed before the computer completely enters Sleep mode.

To restore your computer to normal mode

- 1 Close all open programs.
- 2 Click **Start**, the arrow next to the **Shut down** button, and **Restart**.
- 3 If your computer does not restart, press the **Ctrl+Alt+Delete** keys and click the arrow next to the **Shut down** button and **Restart**.
- 4 If this procedure does not work, press and hold the power button until the computer turns off.

! Turning off your computer with the **Ctrl+Alt+Delete** keys or the power button may cause loss of unsaved data.

## What should I do if my computer does not accept my password and returns a message, Enter Onetime Password?

If you enter a wrong power-on password three times consecutively, the **Enter Onetime Password** message appears and Windows will not start. Press and hold the power button for more than four seconds to check that the power indicator light turns off. Wait for 10 or 15 seconds, then restart your computer and enter the correct password. When entering the password, make sure that the Caps lock indicator light is unlit and use the numeric keys above the alphabet keys, not on the numeric keypad.

## What should I do if my game software does not work or it keeps crashing?

- ❑ Check the web site of the game if there are any patches or updates to download.
- ❑ Make sure you have installed the latest video driver software.
- ❑ On some VAIO models, the graphics memory is shared with the system. The optimal graphic performance in such a case is not guaranteed.

## What should I do if I cannot remember the power-on password?

If you have forgotten the power-on password, contact an authorized Sony Service Center to reset it. A reset fee will be charged. To find the nearest center or agent, see **Finding More about Your VAIO Computer (page 5)**.

## How can I change the boot device order?

You can use one of the BIOS functions to change the boot device order. Follow these steps:

- 1 Turn on your computer.
- 2 Press the **F2** key when the VAIO logo appears.  
The BIOS setup screen appears. If not, restart the computer and press the **F2** key several times when the VAIO logo appears.
- 3 Press the **←** or **→** key to select **Boot**.
- 4 Press the **↑** or **↓** key to select your desired priority under **Boot Priority** and press the **Enter** key.
- 5 Press the **↑** or **↓** key to select the device to which you want to assign the priority and press the **Enter** key.
- 6 Press the **←** or **→** key to select **Exit**, select **Exit Setup**, and then press the **Enter** key.  
At the confirmation prompt, press the **Enter** key.

## Why doesn't my screen turn off after the automatic turn-off time has passed?

Some software applications or screen savers are designed to temporarily disable the feature of your operating system that turns off the computer screen or places the computer into Sleep mode after a certain period of inactivity. To solve this problem, exit the running software application(s) or change the current screen saver.

## What should I do if I cannot boot my computer from the USB floppy disk drive connected to the computer?

To boot your computer from the USB floppy disk drive, you need to change the boot device.

Turn on your computer and press the **F11** key when the VAIO logo appears.

## How do I check the volume of the recovery partition?

Your built-in storage device contains the recovery partition where the data for the system recovery is stored. To check the volume of the recovery partition, follow these steps:

- 1 Click **Start**, right-click **Computer**, and select **Manage**.
- 2 Click **Disk Management** under **Storage** in the left pane.  
The volume of the recovery partition and the total volume of the C drive are displayed in the **Disk 0** row in the center pane.

## System Security

### How can I protect my computer against security threats, such as viruses?

The Microsoft Windows operating system is preinstalled on your computer. The best way to protect your computer against security threats, such as viruses, is to download and install the latest Windows updates regularly.

You can get important Windows updates by doing the following:



Your computer must be connected to the Internet to download the updates.

- 1 Click **Start** and **Control Panel**.
- 2 Click **System and Security**.
- 3 Click **Action Center**.
- 4 Follow the on-screen instructions to set up automatic or scheduled updates.

### How do I keep my antivirus software updated?

You can keep the **Norton Internet Security** software program current with the latest updates from Symantec Corporation.

To download and install the latest security updates, follow these steps:



Your computer must be connected to the Internet to download the updates.

- 1 Click **Start**, **All Programs**, **Norton Internet Security**, and **LiveUpdate**.
- 2 Follow the on-screen instructions to complete the updates.

## Built-in Camera

### Why does the viewfinder show no images or poor-quality images?

- The built-in camera cannot be shared by more than one software application. Exit the current application before launching another.
- The viewfinder may show some noise, for example horizontal streaks, when you are viewing a rapid-moving object. This is normal and does not indicate a malfunction.
- If the problem persists, restart your computer.

### Why are captured images poor in quality?

- The images captured under the fluorescent light may show reflections of light.
- A dark portion in captured images may appear as a noise.
- If the lens protection cover is dirty, you cannot take a clear shot. Clean the cover. See **Built-in Camera (page 114)**.

### What should I do if captured images contain dropped frames and audio interruptions?

- The effect settings on your software application may cause dropped frames. See the help file included with your software application for more information.
- There may be more software applications running than your computer can handle. Exit the applications that you are not currently using.
- The power management function of your computer may be active. Check the CPU performance.

## What should I do if captured images flicker?

This problem occurs when you use the camera under fluorescent lights due to a mismatch between the lighting output frequency and the shutter speed.

To reduce flicker noise, change the direction of the camera or the brightness of camera images. In some software applications, you can set an appropriate value to one of the camera properties (e.g. light source, flicker, etc.) to eliminate flicker noise.

## Why is the video input from the built-in camera suspended for a few seconds?

The video input may be suspended for a few seconds if:

- a shortcut key with the **Fn** key is used.
- the CPU load increases.

This is normal and does not indicate a malfunction.

## What should I do if my computer becomes unstable when it enters a power saving mode while the built-in camera is in use?

If your computer automatically enters Sleep mode, change the corresponding power saving mode setting. To change the setting, see **Using the Power Saving Mode (page 26)**.

## Networking

### What should I do if my computer cannot connect to a wireless LAN access point?

- ❑ Connection capability is affected by distance and obstructions. You need to place your computer away from obstructions or move any access point you may be using closer to the computer.
- ❑ Make sure the **WIRELESS** indicator light is lit on your computer.
- ❑ Make sure power to the access point is on.
- ❑ Follow these steps to check the settings:
  - 1 Click **Start** and **Control Panel**.
  - 2 Click **View network status and tasks** under **Network and Internet**.
  - 3 Click **Connect to a network** to confirm that your access point is selected.
- ❑ Make sure the encryption key is correct.
- ❑ Make sure **Maximum Performance** is selected for **Wireless Adapter Settings** in the **Power Options** window. Selecting any other option may result in a communication failure. To change the settings, follow these steps:
  - 1 Right-click the power status icon on the taskbar and select **Power Options**.
  - 2 Click **Change plan settings**.
  - 3 Click **Change advanced power settings**.
  - 4 Select the **Advanced settings** tab.
  - 5 Double-click **Wireless Adapter Settings** and **Power Saving Mode**.
  - 6 Select **Maximum Performance** from the drop-down list for **Plugged in**.

## What should I do if I cannot access the Internet?

- ❑ Check the access point settings. See the manual that came with your access point for more information.
- ❑ Make sure your computer and the access point are connected to one another.
- ❑ Place your computer away from obstacles or move any access point you may be using closer to the computer.
- ❑ Make sure your computer is properly configured for Internet access.
- ❑ Make sure **Maximum Performance** is selected for **Wireless Adapter Settings** in the **Power Options** window. Selecting any other option may result in a communication failure. Follow the steps in **What should I do if my computer cannot connect to a wireless LAN access point? (page 134)** to change the settings.

## Why is the data transfer speed slow?

- ❑ The wireless LAN data transfer speed is affected by distance and obstructions between devices and access points. Other factors include device configurations, radio conditions, and software compatibility. To maximize the data transfer speed, place your computer away from obstacles or move any access point you may be using closer to the computer.
- ❑ If you are using a wireless LAN access point, the device may be temporarily overloaded depending on how many other devices are communicating via the access point.
- ❑ If your access point interferes with other access points, change the access point channel. See the manual that came with your access point for more information.
- ❑ Make sure **Maximum Performance** is selected for **Wireless Adapter Settings** in the **Power Options** window. Selecting any other option may result in a communication failure. Follow the steps in **What should I do if my computer cannot connect to a wireless LAN access point? (page 134)** to change the settings.

## How do I avoid data transfer interruptions?

- ❑ While your computer is connected to an access point, data transfer interruptions may occur if a large file is exchanged or the computer is placed in close proximity to microwaves and cordless telephones.
- ❑ Move your computer closer to the access point.
- ❑ Make sure the access point connection is intact.
- ❑ Change the access point channel. See the manual that came with your access point for more information.
- ❑ Make sure **Maximum Performance** is selected for **Wireless Adapter Settings** in the **Power Options** window. Selecting any other option may result in a communication failure. Follow the steps in **What should I do if my computer cannot connect to a wireless LAN access point? (page 134)** to change the settings.

## What are channels?

- ❑ Wireless LAN communication uses divided frequency bands known as channels. Third-party wireless LAN access point channels may be preset to different channels from Sony devices.
- ❑ If you are using a wireless LAN access point, see connectivity information contained in the manual that came with your access point.

## Why does the network connection stop when I change the encryption key?

Two computers with the wireless LAN function may lose a peer-to-peer network connection if the encryption key is changed. You can either change the encryption key back to the original profile or re-enter the key on both computers so the key matches.

## Bluetooth Technology

### What should I do if other Bluetooth devices cannot find my computer?

- ❑ Make sure both devices have the Bluetooth function enabled.
- ❑ Make sure the **WIRELESS** indicator light is lit on your computer.
- ❑ Your computer and the device may be too far apart. Wireless Bluetooth technology works best when the devices are within 33 feet (10 meters) of each other.

### What should I do if I cannot find the Bluetooth device I want to communicate with?

- ❑ Check that the Bluetooth function of the device you want to communicate with is on. See the other device's manual for more information.
- ❑ If the device you want to communicate with is already communicating with another Bluetooth device, it may not be found or it may not be able to communicate with your computer.
- ❑ To allow other Bluetooth devices to communicate with your computer, follow these steps:
  - 1 Click **Start** and **Devices and Printers**.
  - 2 Right-click the Bluetooth device icon and click **Bluetooth settings**.
  - 3 Click the **Options** tab and select the **Allow Bluetooth devices to find this computer** check box.

## What should I do if other Bluetooth devices cannot connect to my computer?

- ❑ Check the suggestions in **What should I do if I cannot find the Bluetooth device I want to communicate with?** (page 137).
- ❑ Make sure the other devices are authenticated.
- ❑ The data transfer distance can be shorter than 33 feet (10 meters) depending on existing obstacles between the two devices, on radio wave quality, and on the operating system or the software in use. Move your computer and Bluetooth devices closer to each other.

## Why is my Bluetooth connection slow?

- ❑ The data transfer speed depends on the obstructions and/or the distance between the two devices, on the radio wave quality, and on the operating system or the software in use. Move Bluetooth devices closer to your computer.
- ❑ The 2.4 GHz radio frequency used by Bluetooth and wireless LAN devices is also used by other devices. Bluetooth devices incorporate technology that minimizes interference from other devices using the same wavelength, however, communication speed and connection range may be reduced. Interference from other devices may also stop communications altogether.
- ❑ Connection capability is affected by distance and obstructions. You need to place your computer away from obstacles or move the device to which it is connected closer to the computer.
- ❑ Identify and remove obstacles between your computer and the device to which it is connected.

## Why can't I use the services supported by the connected Bluetooth device?

Connection is only possible for services also supported by the computer with the Bluetooth function. For more details, search **Windows Help and Support** for Bluetooth information.

## Why can't I use the Bluetooth function when I log onto my computer as a user with a standard user account?

The Bluetooth function may not be available to a user with a standard user account on your computer. Log onto the computer as a user with administrative rights.

## Why can't I use the Bluetooth devices when I switch users?

If you switch users without logging off your system, the Bluetooth devices will not work. Be sure to log off before switching users. To log off your system, click **Start**, the arrow next to the **Shut down** button, and **Log off**.

## Why can't I exchange business card data with a mobile phone?

The business card exchange function is not supported.

## What should I do if I do not hear sound from my headphones or audio/video controller?

Check the SCMS-T settings. If your headphones or audio/video controller does not support SCMS-T content protection, you need to connect the device using the Advanced Audio Distribution Profile (A2DP). Follow these steps:

- 1 Click **Start** and **Devices and Printers**.
- 2 Right-click the icon for the device that you want to connect using the A2DP and select **Control**.
- 3 Click **SCMS-T Settings**.
- 4 Click to cancel the **Connect to a device only if it supports SCMS-T content protection** check box.

## Optical Discs

### Why does my computer freeze when I try to read a disc?

The disc that your computer is trying to read may be dirty or damaged. Follow these steps:

- 1 Press the **Ctrl+Alt+Delete** keys and click the arrow next to the **Shut down** button and **Restart** to restart the computer.



Turning off your computer with the **Ctrl+Alt+Delete** keys may cause loss of unsaved data.

- 2 Remove the disc from the optical disc drive.
- 3 Check the disc for dirt or damage. If you need to clean the disc, see **Discs (page 114)** for instructions.

### What should I do if the drive tray does not open?

- Make sure your computer is on.
- Press the drive eject button or the **Fn+E** keys.
- If both buttons do not work, click **Start** and **Computer**, right-click the optical disc drive icon, and select **Eject**.
- If none of the above options work, insert a thin, straight object (such as a paper clip) into the manual eject hole on the optical disc drive.
- Try restarting your computer.

## What should I do if I cannot play a disc properly on my computer?

- ❑ Make sure the disc is inserted into the optical disc drive with the label side facing toward you.
- ❑ Make sure the necessary program(s) is installed according to the manufacturer's instructions.
- ❑ If a disc is dirty or damaged, your computer will stop responding. Follow these steps:
  - 1 Press the **Ctrl+Alt+Delete** keys and click the arrow next to the **Shut down** button and **Restart** to restart the computer.  
**!**  
Turning off your computer with the **Ctrl+Alt+Delete** keys may cause loss of unsaved data.
  - 2 Remove the disc from the optical disc drive.
  - 3 Check the disc for dirt or damage. If you need to clean the disc, see **Discs (page 114)** for instructions.
- ❑ If you are playing a disc and cannot hear sound, do any of the following:
  - ❑ The volume may have been turned off by the muting button on the wireless keyboard or the remote commander (if supplied). Press the button once again.
  - ❑ The volume may have been minimized with the volume down button on the wireless keyboard or the remote commander (if supplied). Press the volume up button to turn up the volume loud enough to hear sound.
  - ❑ Right-click the volume icon on the taskbar and click **Open Volume Mixer** to check the settings.
  - ❑ Check the volume setting in the audio mixer.
  - ❑ If you are using external speakers, check the volume settings on the speakers and the connections between the speakers and your computer.

- ❑ Make sure the correct driver software is installed. Follow these steps:
  - 1 Click **Start** and **Control Panel**.
  - 2 Click **System and Security**.
  - 3 Click **System**.
  - 4 Click **Device Manager** in the left pane.

The **Device Manager** window appears with a listing of your computer's hardware devices.  
If an "X" or an exclamation point appears on the listed device, you may need to enable the device or reinstall the driver software.
  - 5 Double-click the optical disc drive device to open a list of the optical disc drives of your computer.
  - 6 Double-click your desired drive.

You can confirm the driver software by selecting the **Driver** tab, and clicking **Driver Details**.
  - 7 Click **OK** to close the window.
- ❑ Make sure an adhesive label is not affixed to a disc. Adhesive labels can come off while the disc is in the optical disc drive and damage the drive or cause it to malfunction.
- ❑ If a region code warning appears, the disc may be incompatible with the optical disc drive. Check the package to make sure the region code is compatible with the optical disc drive.
- ❑ If you notice condensation on your computer, do not use the computer for at least one hour. Condensation can cause the computer to malfunction.

## What should I do if I cannot play Blu-ray Disc media or my computer becomes unstable during Blu-ray Disc playback?

- ❑ Check if your optical disc drive supports the Blu-ray Disc media.
- ❑ You may not be able to play some Blu-ray Disc content on your computer, or the computer may become unstable during Blu-ray Disc playback. To play content normally, download and install the latest updates for the **WinDVD BD** using the **VAIO Update**.  
For information on how to use the **VAIO Update**, see **Updating Your Computer (page 28)**.

## What should I do if I cannot write data to CD media?

- ❑ Make sure you neither launch any software application nor allow any to launch automatically, not even a screen saver.
- ❑ If you are using a CD-R/RW disc with an adhesive label affixed, replace it with one with no affixed adhesive label. Using a disc with an affixed adhesive label could cause a write error or other damage.

## What should I do if I cannot write data to DVD media?

- ❑ Make sure you are using the correct DVD recordable media.
- ❑ Check which DVD recordable format is compatible with your optical disc drive. Some brands of DVD recordable media do not work.

## Why can't I write data to Blu-ray Disc media?

- ❑ Check if your optical disc drive supports the Blu-ray Disc writing function.
- ❑ BD-R Disc media are not rewritable. You cannot add or erase data to or from the BD-R Disc media.

## Display

### Why did my screen go blank?

- ❑ Your computer screen may go blank if the computer enters Sleep mode. If the computer is in Sleep mode, press any key to bring the computer back into Normal mode. See **Using the Power Saving Mode (page 26)** for more information.
- ❑ Make sure the computer input is selected as the audio/video input source. To change the input source, press the **INPUT SELECT** button on the computer or the remote commander (if supplied).
- ❑ Make sure your computer is securely plugged into a power source and turned on and the power indicator light is lit.
- ❑ The LCD backlight of your computer may have been turned off. Press the **DISPLAY OFF** button.

### What should I do if I do not see proper images or videos?

- ❑ Be sure to select **True Color (32 bit)** for the display colors before using video/image software or starting DVD playback. Selecting any other option may prevent such software from displaying images successfully. To change the display colors, follow these steps:
  - 1 Right-click on the desktop and select **Screen resolution**.
  - 2 Click **Advanced settings**.
  - 3 Click the **Monitor** tab.
  - 4 Select **True Color (32 bit)** under **Colors**.
- ❑ Do not change the display resolution or colors while using video/image software or playing DVDs, as it may cause unsuccessful playback/display or unstable system operations. Additionally, it is recommended you disable your screen saver before starting DVD playback. If the screen saver is enabled, it may be activated during DVD playback and prevent the playback from running successfully. Some screen savers have been found to even change the display resolution and colors.

## Why doesn't my screen display a video?

The video memory of your computer may be insufficient for displaying high resolution videos. In such a case, lower the resolution of the LCD screen.

To change the screen resolution, follow these steps:

- 1 Right-click on the desktop and select **Screen resolution**.
- 2 Click the drop-down list next to **Resolution**.
- 3 Move the slider up to increase or down to decrease the screen resolution.



You can check the total amount of the graphics and video memory available. Right-click on the desktop, select **Screen resolution**, and click **Advanced Settings** and the **Adapter** tab. The displayed value may be different from the actual amount of memory on your computer.

## What should I do if my screen is dark?

Make sure the computer input is selected as the audio/video input source and press the **Fn+F6** keys on the wireless keyboard to brighten your computer screen. To change the input source, press the **INPUT SELECT** button on the computer or the remote commander (if supplied).

## How do I run Windows Aero?

To run Windows Aero, follow these steps:

- 1 Right-click on the desktop and select **Personalize**.
- 2 Select your desired theme from **Aero Themes**.

For information about the Windows Aero features, such as Windows Flip 3D, see **Windows Help and Support**.

# Printing

## What should I do if I cannot print a document?

- ❑ Make sure your printer is on, and the printer cable is securely connected to the ports on the printer and your computer.
- ❑ Make sure your printer is compatible with the Windows operating system installed on your computer.
- ❑ You may need to install the printer driver software before you use your printer. See the manual that came with your printer for more information.
- ❑ If your printer is not functioning after your computer resumes from Sleep mode, then restart the computer.
- ❑ If the bidirectional communication functions are provided with your printer, disabling the functions on your computer may enable printing. Follow these steps:
  - 1 Click **Start** and **Devices and Printers**.
  - 2 Right-click the printer icon and select **Properties**.
  - 3 Click the **Ports** tab.
  - 4 Click to cancel the **Enable bidirectional support** check box.
  - 5 Click **OK**.

This disables the bidirectional communication functions of the printer, such as data transfer, status monitoring, and remote panel.

## Microphone

### What should I do if my microphone does not work?

- ❑ If you are using an external microphone, make sure the microphone is turned on and is properly plugged into the microphone jack on your computer.
- ❑ Your sound input device may have been incorrectly configured. To configure the sound input device, follow these steps:
  - 1 Close all open programs.
  - 2 Click **Start** and **Control Panel**.
  - 3 Click **Hardware and Sound**.
  - 4 Click **Manage audio devices** under **Sound**.
  - 5 On the **Recording** tab, select your desired device for sound input and click **Set Default**.

### How can I prevent microphone feedback?

Microphone feedback occurs when the microphone receives the sound from a sound output device, such as a speaker.

To prevent this problem:

- ❑ Keep the microphone away from a sound output device.
- ❑ Turn down the volume of the speakers and the microphone.

## Mouse

### What should I do if my computer does not recognize my mouse?

- Make sure the power switch on the bottom of the wireless mouse is in the **ON** position.
- Make sure another mouse is not connected.
- Make sure the supplied AA batteries are properly installed.
- Press the **CONNECT** button on the wireless mouse and then on your computer within 10 seconds to re-establish the connection between the two devices.
- The supplied AA batteries may have run out of power. Replace the batteries.

## What should I do if the pointer does not move when I use my mouse?

- ❑ Make sure another mouse is not connected.
- ❑ If the pointer does not move while a software application is running, press the **Alt+F4** keys to close the application window.
- ❑ If the **Alt+F4** keys do not work, press the Windows key once and then the **→** key several times, select **Restart** with the **↑** or **↓** key, and press the **Enter** key to restart your computer.
- ❑ If your computer does not restart, press the **Ctrl+Alt+Delete** keys, select the arrow next to the **Shut down** button with the **↓** and **→** keys and then **Restart** with the **↑** or **↓** key, and press the **Enter** key to restart your computer.
- ❑ If this procedure does not work, press and hold the power button until the computer turns off.



Turning off your computer with the power button may cause loss of unsaved data.

- ❑ Avoid using any wireless devices that exchange radio signals on the 2.4 GHz frequency band near your wireless mouse. These devices may cause interference, causing your mouse to stop working properly.
- ❑ Do not place metal furniture near your computer or wireless mouse, as this may create interference, causing your mouse to stop working properly.

## Speakers

### What should I do if I do not hear sound from the built-in speakers?

- ❑ If you are using a program that has its own volume control, make sure the volume control is properly set. See the program's help file for more information.
- ❑ The volume may have been turned off by the muting button on the wireless keyboard or the remote commander (if supplied). Press the button once again.
- ❑ The volume may have been minimized by the volume down button on the wireless keyboard or the remote commander (if supplied). Press the volume up button to turn up the volume loud enough to hear sound.
- ❑ Check the Windows volume controls by clicking the volume icon on the taskbar.
- ❑ Your sound output device may have been incorrectly configured. To change the sound output device, see **How do I change the sound output device? (page 154)**.

### What should I do if my external speakers do not work?

- ❑ Check the suggestions in **What should I do if I do not hear sound from the built-in speakers? (page 150)**.
- ❑ Make sure your speakers are properly connected and the volume is turned up loud enough to hear sound.
- ❑ Make sure your speakers are designed for computer use.
- ❑ If your speakers have a muting button, set the button to off.
- ❑ If your speakers require external power, make sure the speakers are connected to a power source. See the manual that came with your speakers for more information.

## Touch Screen

### What should I do if the touch screen does not work?

- ❑ The HDMI input or the video input may be selected as the audio/video input source. Press the **INPUT SELECT** button on the computer or the remote commander (if supplied) to switch the input source to the computer input.
- ❑ You may have disabled the touch screen. Use the wireless mouse to click **Start, Control Panel, Hardware and Sound,** and **Pen and Touch**, and then click to select the **Use your finger as an input device** check box on the **Touch** tab.

### What should I do if I cannot tap on the exact spot that I intend on the touch screen?

Changing the aspect ratio along with the screen resolution may cause loss of correct coordinates on the touch screen. In such a case, follow these steps to calibrate the touch screen with the **Control Panel**.

- 1 Click **Start, Control Panel,** and **Tablet PC Settings** with the wireless mouse.
- 2 Click **Calibrate** on the **Display** tab.
- 3 Follow the on-screen instructions.

## Keyboard

### What should I do if the keyboard configuration is wrong?

The language layout of your wireless keyboard is labeled on the packaging box. If you choose a different regional keyboard when you complete the Windows setup, the key configuration will be mismatched.

To change the keyboard configuration, follow these steps:

- 1 Click **Start** and **Control Panel**.
- 2 Click **Clock, Language, and Region**, and then **Change keyboards or other input methods** under **Region and Language**.
- 3 Click **Change keyboards** on the **Keyboards and Languages** tab.
- 4 Change the settings as desired.

### What should I do if I cannot use the numeric keypad to enter numbers?

If you cannot use the numeric keypad, Num Lk mode may not be activated. Check if the green Num lock icon is on the taskbar. If the Num lock icon is not on the taskbar or is white, press the **Num Lk** key to activate the mode before entering numerals.

### What should I do if my computer does not recognize my keyboard?

- Make sure the power switch on the wireless keyboard is in the **ON** position.
- Make sure the supplied AA batteries are properly installed.
- Press the **CONNECT** button on the wireless keyboard and then on your computer while the connect indicator light  $\Upsilon$  is blinking rapidly to re-establish the connection between the two devices.
- The supplied AA batteries may have run out of power. Replace the batteries.

## Floppy Disks

### Why doesn't the Safely Remove Hardware icon appear on the taskbar when the drive is connected?

Your computer does not recognize the floppy disk drive. First, make sure the USB cable is properly connected to the USB port. If you need to secure the connection, wait a few moments for the computer to recognize the drive. If the icon still does not appear, follow these steps:

- 1 Close all programs that are accessing the floppy disk drive.
- 2 Wait until the indicator light on the floppy disk drive turns off.
- 3 Push the eject button to remove the disk, and unplug the USB floppy disk drive from your computer.
- 4 Reconnect the floppy disk drive by plugging the USB cable into the USB port.
- 5 Restart the computer by clicking **Start**, the arrow next to the **Shut down** button, and **Restart**.

### What should I do if I cannot write data to a floppy disk?

- Make sure the floppy disk is properly inserted in the drive.
- If the disk is inserted properly and you are still unable to write data to it, the disk may be full or write-protected. You can either use a floppy disk that is not write-protected or disable the write-protect feature.

## Audio/Video

### What should I do if I cannot use my digital video camcorder?

If a message appears stating that the i.LINK device is disconnected or turned off, the i.LINK cable may not be securely plugged into the port on your computer or camcorder. Unplug the cable, and plug it in once again. See **Connecting an i.LINK Device** (page 95) for more information.

### How do I turn off the Windows startup sound?

To turn off the Windows startup sound, follow these steps:

- 1 Click **Start** and **Control Panel**.
- 2 Click **Hardware and Sound**.
- 3 Click **Manage audio devices** under **Sound**.
- 4 On the **Sounds** tab, click to cancel the **Play Windows Startup sound** check box.
- 5 Click **OK**.

### How do I change the sound output device?

If you do not hear sound from the device connected to a port, such as the USB port, HDMI output port, optical output port, or headphones jack, you need to change the device for sound output.

- 1 Close all open programs.
- 2 Click **Start** and **Control Panel**.
- 3 Click **Hardware and Sound**.
- 4 Click **Manage audio devices** under **Sound**.
- 5 On the **Playback** tab, select your desired device for sound output and click **Set Default**.

## What should I do if I do not hear the sound from the sound output device connected to the HDMI output port, optical output port, or headphones jack?

- ❑ You need to change the sound output device if you want to hear sound from the device connected to a port, such as the HDMI output port, optical output port, or headphones jack. For the detailed procedure, see **How do I change the sound output device?** ([page 154](#)).
- ❑ If you still hear no sound from the sound output device, follow these steps:
  - 1 Follow steps 1 to 4 in **How do I change the sound output device?** ([page 154](#)).
  - 2 On the **Playback** tab, select the HDMI or S/PDIF icon and click **Properties**.
  - 3 Click the **Advanced** tab.
  - 4 Select the sample rate and bit depth (for example, 48000 Hz, 16 bit) which the device supports.
  - 5 Click **OK**.

## How do I output the Dolby Digital or DTS sound through an S/PDIF-compatible device?

To output the Dolby Digital or DTS sound from a disc through an S/PDIF-compatible device connected to your computer, follow these steps:

- 1 Click **Start** and **Control Panel**.
- 2 Click **Hardware and Sound**.
- 3 Click **Manage audio devices** under **Sound**.
- 4 On the **Playback** tab, select the optical out icon and click **Properties**.
- 5 Click the **Supported Formats** tab.
- 6 Click to select the **DTS Audio** and **Dolby Digital** check boxes.
- 7 Click **OK**.

! If the Dolby Digital or DTS output is connected to a device that does not support it, the device will not play any sound. In such a case, cancel the **DTS Audio** and **Dolby Digital** check boxes.

## Why do sound interruptions and/or dropped frames occur when I play high-definition videos, such as those recorded with the AVCHD digital video camcorder?

Playing high-definition videos requires substantial hardware resources, such as CPU, GPU, or system memory performance on your computer. During the video playback, some operations and/or functions may become unavailable, and sound interruptions, dropped frames, and playback failure may occur depending on the configuration of your computer.

## HDMI/VIDEO Input Function

### What should I do if I cannot change the volume with the Up/Down buttons?

You cannot change the volume with the **▲/▼** (Up/Down) buttons while the computer input is selected as the audio/video input source. Press the **INPUT SELECT** button on the computer or the remote commander (if supplied) to switch the audio/video input source to the HDMI input or the video input.



The **INPUT SELECT** and **HDMI/VIDEO** indicator lights illuminate in green when the HDMI input or the video input is selected as the audio/video input source.

### What should I do if I cannot change the volume or LCD brightness with the wireless keyboard?

You cannot change the volume or the brightness with the wireless keyboard while using the HDMI/VIDEO input function. Use the OSD menu for brightness control. To change the volume, use the **▲/▼** (Up/Down) button on the right of your computer or the remote commander (if supplied). See **Using the HDMI/VIDEO Input Control Buttons (page 63)** or **Using the Remote Commander (page 66)** for more information on volume control.



The **INPUT SELECT** and **HDMI/VIDEO** indicator lights illuminate in green when the HDMI input or the video input is selected as the audio/video input source.

### How do I view the Windows desktop?

To display the Windows desktop, make sure your computer is turned on, and then press the **INPUT SELECT** button on the the computer or the remote commander (if supplied) to switch the audio/video input source to the computer input. If your computer screen remains blank, see **What should I do if the green power indicator light turns on but my screen remains blank? (page 126)**.

## How can I save audio/video signals receiving with the HDMI/VIDEO input function into a file?

You cannot capture audio/video signals coming from the device connected to the **HDMI INPUT** port or the **VIDEO INPUT** jacks and save them into a file on your computer. It is logically impossible because the audio/video input source must be either the HDMI input or the video input to receive such signals and, to access Windows for any file operations, you must change the input source to the computer input.

## "Memory Stick"

### What should I do if I cannot use "Memory Stick" that was formatted on a VAIO computer on other devices?

You may need to reformat your "Memory Stick".

Formatting "Memory Stick" erases all data, including music data previously saved on it. Before you reformat "Memory Stick", back up important data and confirm that "Memory Stick" does not contain files you want to keep.

- 1 Copy the data from "Memory Stick" onto your built-in storage device to save data or images.
- 2 Format "Memory Stick" by following the steps in **Formatting "Memory Stick" (page 73)**.

### Can I copy images from a digital camera using "Memory Stick"?

Yes, and you can view video clips that you have recorded with digital cameras that are compatible with "Memory Stick".

### Why can't I write data to "Memory Stick"?

Some versions of "Memory Stick" are equipped with an erasure prevention switch to protect data from unintentional erasure or overwriting. Make sure the erasure prevention switch is off.

## Peripherals

### What should I do if I cannot connect a USB device?

- ❑ If applicable, check the USB device is turned on and using its own power supply. For example, if you are using a digital camera, check if the battery is charged. If you are using a printer, check if the power cable is connected properly to the AC outlet.
- ❑ Try using another USB port on your computer. The driver software could be installed to the specific port you used the first time you connected the device.
- ❑ See the manual that came with your USB device for more information. You may need to install software before you connect the device.
- ❑ Try connecting a simple, low-powered device such as a mouse to test if the port is working at all.
- ❑ USB hubs may prevent a device from working because of a power distribution failure. We recommend you connect the device directly to your computer without a hub.

# Trademarks

© 2009 Sony Electronics Inc. All rights reserved. Reproduction in whole or in part without written permission is prohibited.

Sony, the Sony logo, "Memory Stick", "Memory Stick Duo", "MagicGate", "OpenMG", "OpenMG X", "Memory Stick PRO Duo", "Memory Stick PRO", "Memory Stick PRO-HG Duo", "Memory Stick Micro", "M2", the "Memory Stick" logo, Micro Vault, Micro Vault EX, MOTION EYE, Sony Style, DVgate, DVgate Plus, i.LINK, VAIO Care, VAIO Media, VAIO Media Music Server, VAIO Media Photo Server, VAIO Media Console, VAIO Sphere, VAIO World, VAIO Zone, Vegas, VAIO Media Video Server, Click to BD, G-Sensor, like.no.other, Handycam, LocationFree Player, SonicStage, SonicFlow, SmartWi, ATRAC, ATRAC3plus, XBRITE, XBRITE DuraView, XBRITE-ECO, XBRITE-Full HD, and XBRITE-HiColor are trademarks or registered trademarks of Sony Corporation.

VAIO, the VAIO logo, MY MEMORY CENTER, Backstage, Backstage Access, VAIO DIGITAL STUDIO, LOCATIONFREE, HDNA, and the HDNA logo are trademarks or registered trademarks of Sony Electronics Inc.


Intel, Centrino, Core, Celeron, Xeon, and Pentium are trademarks or registered trademarks of Intel Corporation in the United States and/or other countries.

Microsoft, Windows, Windows Media, Windows Mobile, Windows NT, Windows Vista, BitLocker, Outlook, Excel, MS-DOS, PowerPoint, ReadyBoost, Internet Explorer, Aero, Windows Live, OneCare, and the Windows logo are trademarks or registered trademarks of Microsoft Corporation in the United States and/or other countries.

Blu-ray Disc and the Blu-ray Disc logo are trademarks of the Blu-ray Disc Association.

The Bluetooth word mark and logos are registered trademarks owned by Bluetooth SIG, Inc. and any use of such marks by Sony Corporation is under license. Other trademarks and trade names are those of their respective owners.

SD Logo is a trademark. 

SDHC Logo is a trademark. 

HDMI, the HDMI logo and High-Definition Multimedia Interface are trademarks or registered trademarks of HDMI Licensing LLC.

"AVCHD" is a trademark of Panasonic Corporation and Sony Corporation.

Dolby is a registered trademark of Dolby Laboratories.

All other names of systems, products, and services are trademarks of their respective owners. In the manual, the ™ or ® marks may not be specified.

Features and specifications are subject to change without notice. All other trademarks are trademarks of their respective owners.

# Notice

© 2009 Sony Corporation. All rights reserved.

This manual and the software described herein, in whole or in part, may not be reproduced, translated, or reduced to any machine-readable form without prior written approval.

Sony Corporation provides no warranty with regard to this manual, the software, or other information contained herein and hereby expressly disclaims any implied warranties or merchantability or fitness for any particular purpose with regard to this manual, the software, or such other information. In no event shall Sony Corporation be liable for any incidental, consequential, or special damages, whether based on tort, contract, or otherwise, arising out of or in connection with this manual, the software, or other information contained herein or the use thereof.

In the manual, the ™ or ® marks are not specified.

Sony Corporation reserves the right to make any modification to this manual or the information contained herein at any time without notice. The software described herein is governed by the terms of a separate user license agreement.

Sony Corporation is not liable and will not compensate for any lost recordings made to your computer, external recording media, or recording devices or any relevant losses, including when recordings are not made due to reasons including your computer failure, or when the contents of a recording are lost or damaged as a result of your computer failure or repair undertaken to your computer. Sony Corporation will not restore, recover, or replicate the recorded contents made to your computer, external recording media, or recording devices under any circumstances.

