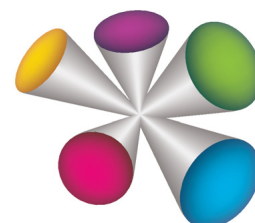




## Software User's Manual

### CONTENTS

|   |    |  |    |
|---|----|--|----|
| About the manual                          | 2  | Using and customizing the Radial Menu            | 20 |
| Navigating the manual                     | 3  | Working with Display Toggle                      | 21 |
| <b>CUSTOMIZING</b>                        | 4  | Working with multiple monitors                   | 22 |
| Opening the control panel                 | 4  | Application-specific settings                    | 23 |
| Control panel overview                    | 5  | Creating an application-specific setting         | 24 |
| Calibrating the pen display               | 7  | Changing application-specific settings           | 24 |
| Adjusting pitch and phase (VGA only)      | 8  | Removing application-specific settings           | 24 |
| Customizing the pen                       | 9  | Working with multiple tools                      | 25 |
| Adjusting tip feel and double-click       | 10 | Changing the tablet mode                         | 26 |
| Adjusting eraser feel                     | 11 | Installing multiple tablets                      | 26 |
| Advanced tip and eraser pressure settings | 11 | Managing preferences                             | 27 |
| Customizing tool buttons                  | 12 | Using applications integrated for tablet control | 28 |
| Customizing tilt sensitivity              | 13 | Importing expert settings                        | 29 |
| Customizing pen display functions         | 13 | <b>GLOSSARY</b>                                  | 30 |
| Customizing ExpressKeys                   | 14 |  |    |
| Customizing the Touch Strips              | 15 |  |    |
| Button functions                          | 16 |  |    |





## ABOUT THE MANUAL

This document provides quick access to information about your interactive pen display. Click on a navigation button or highlighted word to move through the document. The information is common to Windows and Macintosh computers and Windows screen captures are shown, unless otherwise noted.

Note: This manual does not contain information for installing Cintiq. Please see your product installation guide for details.

If you are new to electronic documentation, be sure to read [navigating the manual](#).

- Go directly to [contents](#) or [index](#) topics by clicking on them.
- SMALL CAPITAL LETTERS identify the names of keyboard keys, dialog boxes, and control panel options.
- You can use your viewer zoom-in tool to increase the size of the page on your display screen.
- The following information is not included with this product: information about your specific computer hardware or operating system, or information about your application software. Your best source for this information is the set of manuals and discs that came with your hardware, operating system, or application.
- Many graphics applications have built-in support for pen display features (such as pressure sensitivity, tilt, rotation, and airbrush simulation). Visit the Wacom web site to find a listing of applications that support these features.
- For information on how best to use pen display features within a specific application, see the instructions in that application's manuals.

Wacom's philosophy is to continually improve all of its products. As a result, engineering changes and improvements are made from time to time. Therefore, some changes, modifications, and improvements may not be covered in this document.





## NAVIGATING THE MANUAL

Use the navigation controls to move through the manual:



Go to front page.

Contents

Go to table of contents.

Index

Go to index.



Go back to previous view.



Page back, or page forward.

[topic](#)

Go to topic.



Topic continued.

Adobe® Reader® provides additional tools for using and printing the manual. See the Adobe Reader help for more information.





## CUSTOMIZING

After mastering the basics of using your pen on the interactive pen display, you may want to customize the way Cintiq works. This chapter describes how to use the Wacom Tablet control panel to adjust your pen display and input tool settings.

Advanced users can learn how to further optimize Cintiq by creating [application-specific settings](#).

[Opening the control panel](#)

[Control panel overview](#)

[Calibrating the pen display](#)

[Adjusting pitch and phase \(VGA only\)](#)

[Customizing the pen](#)

[Customizing pen display functions](#)

[Button functions](#)

[Using and customizing the Radial Menu](#)

[Working with Display Toggle](#)

[Working with multiple monitors](#)

[Application-specific settings](#)

[Working with multiple tools](#)

[Changing the tablet mode](#)

[Installing multiple tablets](#)

[Managing preferences](#)

[Using applications integrated for tablet control](#)

[Importing expert settings](#)

## OPENING THE CONTROL PANEL

To open the Wacom Tablet control panel, use the pen on the pen display:

- **Windows.** Click on the Windows START button and choose ALL PROGRAMS. Then select WACOM TABLET and choose the WACOM TABLET PROPERTIES option.
- **Macintosh.** Open SYSTEM PREFERENCES from either the Dock, the Apple menu, or from the APPLICATIONS folder. Then click on the WACOM TABLET icon.

You can begin customizing Cintiq after opening the control panel. See [control panel overview](#).

**Note:** User-specific preferences are supported. After logging in, each user can customize their personal settings in the Wacom Tablet control panel. Switching to another user will automatically load the settings for that user.



# CONTROL PANEL OVERVIEW

Use the Wacom Tablet control panel to customize your Cintiq or input tools.

The upper portion of the control panel displays icons representing your TABLET, TOOL, and APPLICATION settings.

Closes the control panel.

Tabs display customizable settings for the selected TOOL.

TOOL settings

Choose FUNCTIONS to customize your ExpressKeys, Touch Strips, and [Radial Menu](#) settings.

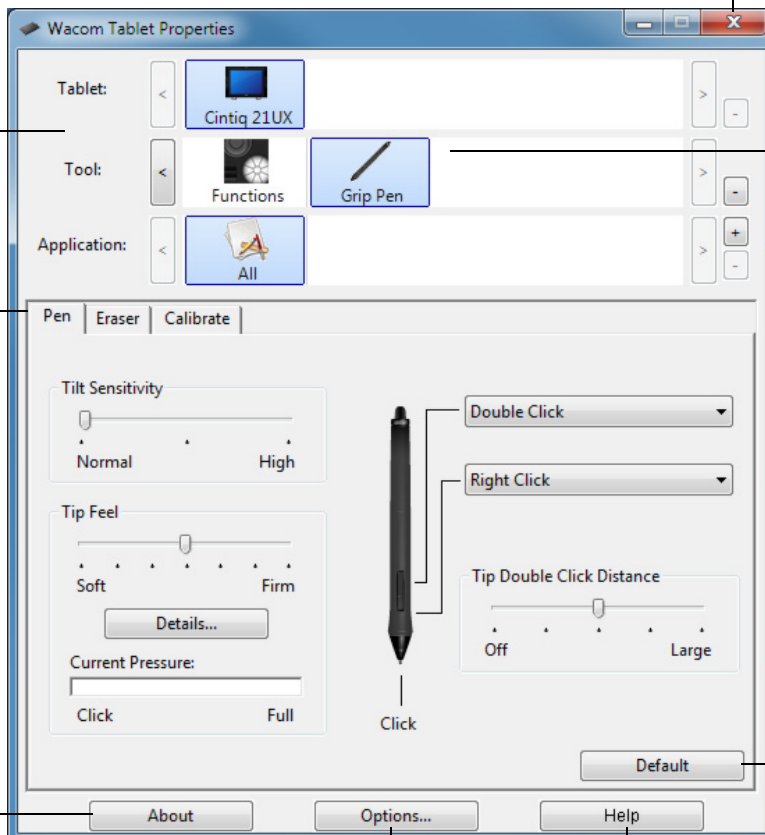
Choose GRIP PEN to customize your pen settings.

Displays an information dialog, and an option to access the [DIAGNOSTICS](#) dialog.

Returns the selected tab to its default settings.

Displays [advanced options](#).

Displays this manual.



Experiment with different settings to find what works best for you. Any changes you make will take effect immediately. Click DEFAULT to return a tab to the factory settings.

Tool Tips are available for most control panel items. Position the screen cursor over an item and let it rest there; in a few moments the Tool Tip will pop up.

Your keyboard tab and arrow keys can be used to navigate the control panel.





**Control panel lists and tabs:** The control panel TABLET, TOOL, and APPLICATION lists allow you to select the tablet, tool, or application for which you want to change settings.

To change tool settings, open the control panel and either choose tablet FUNCTIONS or the tool you want to customize. See [customizing the pen](#) and [customizing pen display functions](#) for more information.

The TABLET list displays an icon for any supported pen display or tablet that has been installed on your system and is currently connected. All settings shown below this list apply to the selected pen display or tablet.

- The control panel will not launch unless a supported pen display or tablet is connected to the computer.
- Settings can only be viewed or changed for an attached pen display or tablet.
- A pen display or tablet cannot be deleted from the control panel list unless it is attached to the computer.

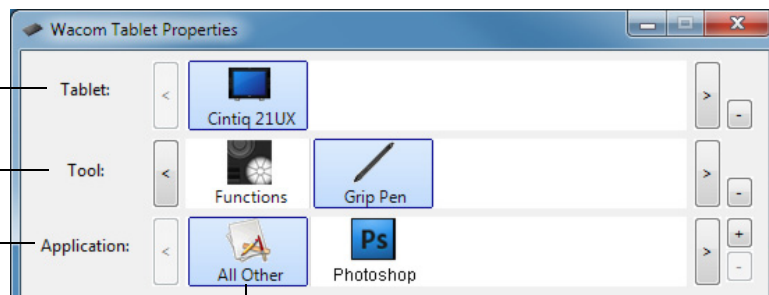
See also [installing multiple tablets](#).

The TOOL list displays an icon for the tablet FUNCTIONS, and for the different tools that have been used on the tablet. See also [working with multiple tools](#).

The APPLICATION list lets you define tool settings that only apply to a specific application. See [application-specific settings](#).

See also [changing the tablet mode](#).

**Note:** The APPLICATION list is for advanced users; it is not necessary to select or add applications in order to customize your Cintiq tool(s).



Your current selections are highlighted.



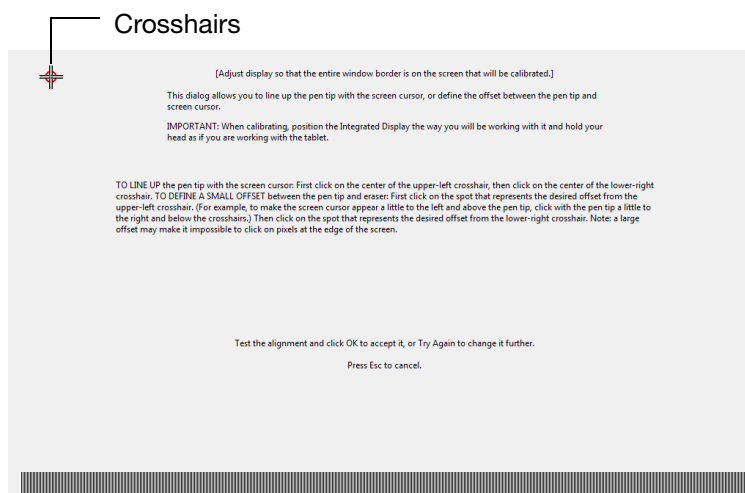
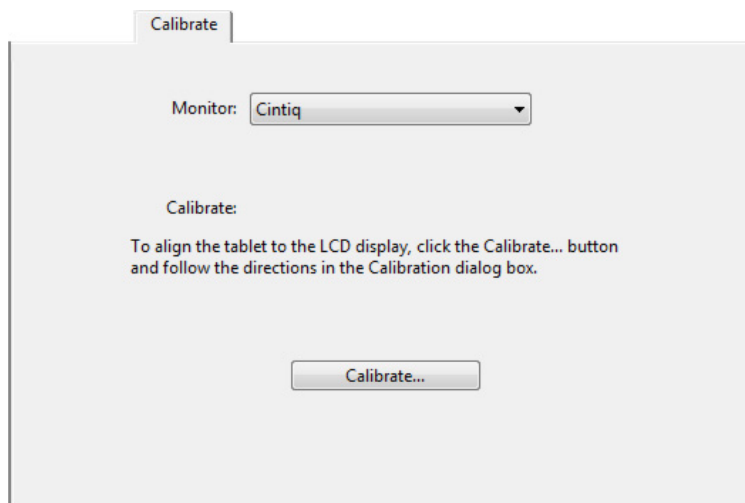
## CALIBRATING THE PEN DISPLAY

You must calibrate the pen display to align the screen cursor with the position of the pen on the display screen. This is required to compensate for viewing angle, and to adjust for parallax caused by the display screen cover glass. Set Cintiq in its working position, then follow the procedure below.

**Important:** When using a VGA connection, be sure the display is properly adjusted before calibrating.

1. Open the Wacom Tablet control panel.  
If more than one pen display is installed on your system, select the unit you are working with from the TABLET list.
2. Select GRIP PEN from the TOOL list. Then select the CALIBRATE tab.
3. If you are working with multiple monitors, select the MONITOR corresponding to your Cintiq. (Only monitors that are set to one of the resolutions supported by Cintiq will appear in the list.)
4. Click CALIBRATE... to activate the calibration screen.
5. Hold the pen and position your head as you normally do when working with the pen display. Use the pen tip to click on the center of the crosshairs in the upper-left corner.
6. Then click on the center of the crosshairs that are displayed in the lower-right corner.
7. Test the alignment by positioning the pen at a few different points on the display. Click OK to accept the calibration. Click TRY AGAIN to recalibrate.

**Note:** Read the directions in the calibration screen for detailed instructions and additional options. The calibration setting applies to all applications.



Adjustment pattern for pitch and phase (VGA only). See the Cintiq installation guide and hardware manual for details.

**Note:** Depending on your product configuration, "Pitch" may also be referred to as "Clock".

**Tip:** To see the screen cursor slightly offset from the actual position of the pen tip, calibrate by clicking on a spot showing that offset from the crosshairs. For example, to have the screen cursor appear 25 mm (1/10th of an inch) above and to the left of the pen tip, calibrate by clicking on a spot 25 mm (1/10th of an inch) below and to the right of the crosshairs.

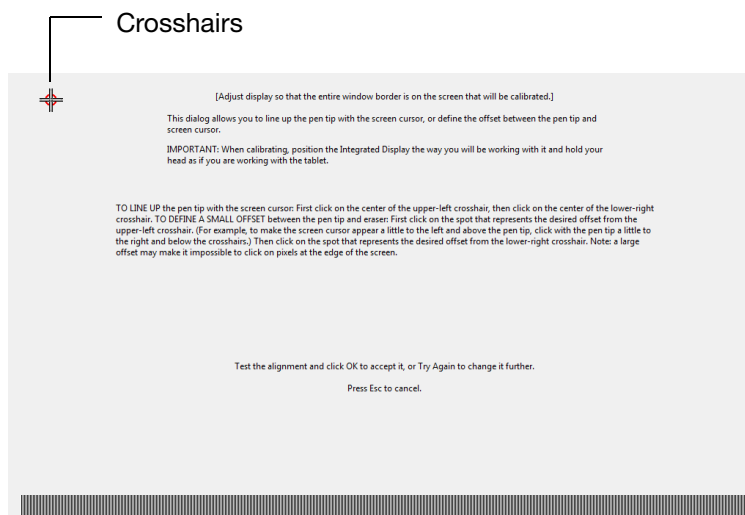
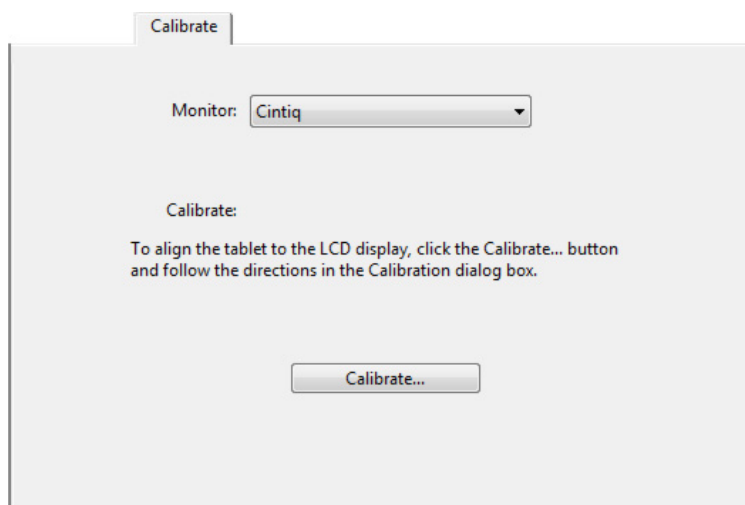


## ADJUSTING PITCH AND PHASE (VGA ONLY)

Some computers and video cards may not allow the auto-sync function to fully work when the interactive pen display is first connected. If some portion of text appears blurred, use the pen display AUTO ADJUST option to automatically synchronize to the incoming signal. If the image is still blurred, adjust pitch and phase. For optimum display quality, set your video card to the maximum (native) resolution that can be used with your pen display. Set Cintiq in its working position, then follow the procedure below.

Note: Depending on your product configuration, “Pitch” may also be referred to as “Clock”.

1. Open the Wacom Tablet control panel.  
If more than one pen display is installed on your system, select the unit you are working with from the TABLET list.
2. Select the CALIBRATE tab.
3. If you are working with multiple displays, be sure the option corresponding to the pen display is selected in the MONITOR menu.
4. Click CALIBRATE... to activate the calibration screen.
5. Using the pen display On Screen Display (OSD) controls, open the OSD menu and select the PITCH option. Then adjust the pitch level so the pattern of fine vertical stripes displays evenly.
6. In the OSD menu, select the PHASE option. Adjust the phase level so the adjustment pattern shows clearly.
7. After completing these adjustments, press the pen display ENTER and MENU buttons to exit the OSD menu.
8. Click on the CANCEL button or press ESC to exit the calibration screen.



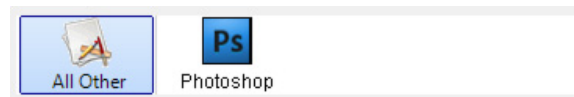
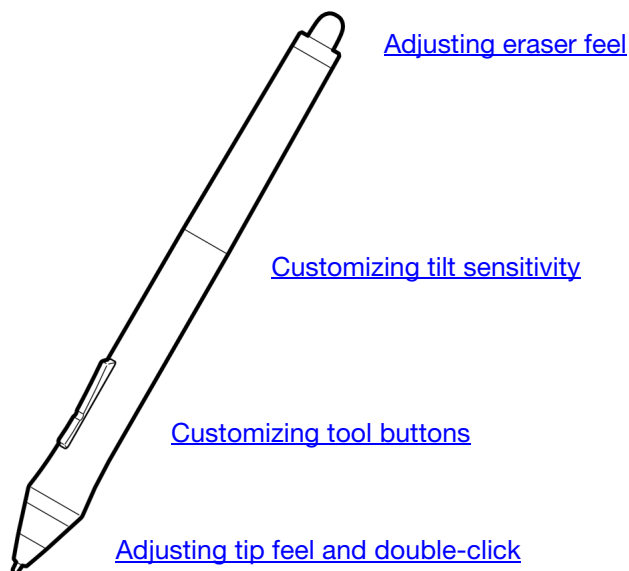
Adjustment pattern for pitch and phase (VGA only).





## CUSTOMIZING THE PEN

Use the pen to open the Wacom Tablet control panel. The pen will be selected in the TOOL list and the appropriate tabs will be displayed. If the pen is not automatically selected, choose it from the TOOL list. Select a tab and choose from the available options.



Wacom offers a number of optional pens, such as the Art Pen and Airbrush, that are compatible for use with Cintiq. These tools are fully supported in the driver software, and will appear in the Wacom Tablet control panel TOOL list after touching the active area of the pen display with the pen tip. The control panel will automatically update to show the new tool and the options available for customization.

In applications supporting the features of these pens, you can adjust the functionality of the Art Pen rotation or the Airbrush fingerwheel within the application. Please refer to the documentation that came with your application for details.

If you will be using these optional tools on your pen display tablet, be sure to visit the Wacom web site for a list of applications that currently support the advanced features of these tools.



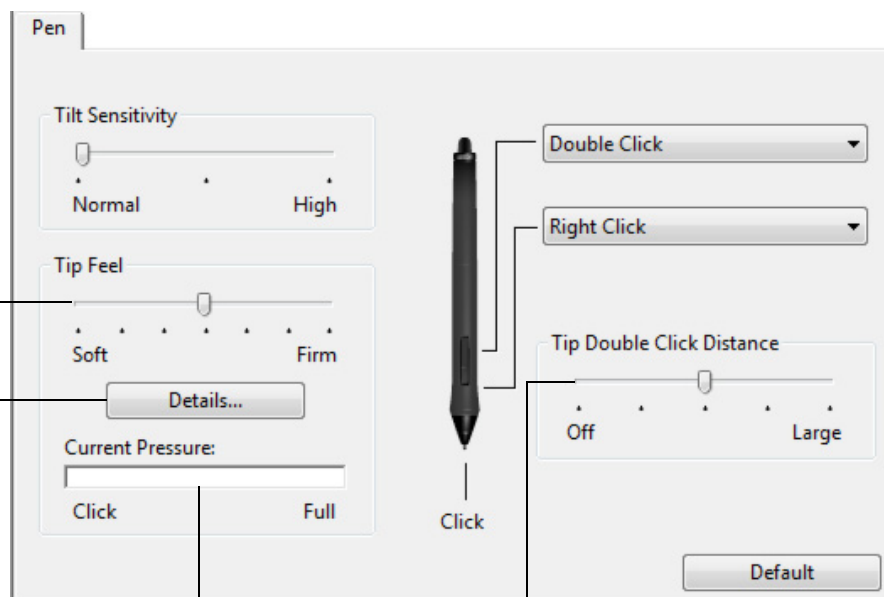
## ADJUSTING TIP FEEL AND DOUBLE-CLICK

To adjust the tip sensitivity of your pen, select the PEN tab.

Customizes the amount of pressure needed to click, draw, or ink. Drag the slider to a softer or firmer setting.

To create broad brush strokes or to click with a light touch, use a SOFT tip setting. For maximum control while drawing thin lines, use a FIRM tip setting.

Displays the tip [FEEL DETAILS](#) dialog box where you can further customize the tip sensitivity.



With your screen cursor positioned over an empty area of the control panel, press down on the pen display screen with your pen tip to test the current tip feel setting. Use the CURRENT PRESSURE bar to determine how hard you must press on the pen to reach maximum pressure.

Adjusts the size of the double-click area. Drag the slider to OFF if you do not want [double-click assist](#).

### Tips:

- Use a soft TIP FEEL for a wider range of pressure values with most pressure-sensitive applications.
- In some applications a soft pressure setting can make the pen overreact – any small press on the pen is magnified on the screen. If you experience this, try a firmer TIP FEEL setting.
- To make double-clicking easier, expand the tap area that accepts a double-click (the double-click distance).
- A large double-click distance may cause a delay at the beginning of your brush strokes in some drawing applications. If you notice such effects, try setting a smaller double-click distance and using the side switch to double-click. You can also set an ExpressKey to double-click.



### ADJUSTING ERASER FEEL

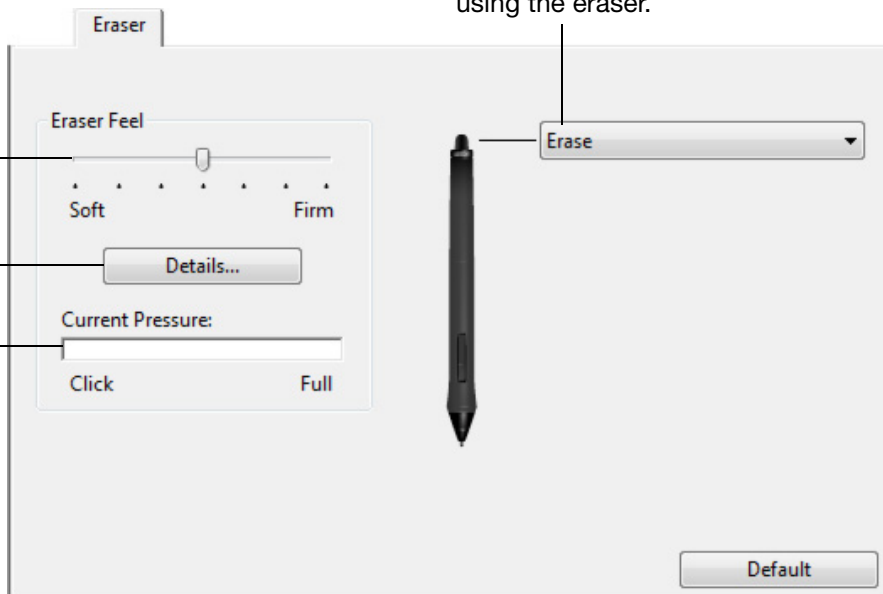
To adjust the eraser sensitivity of your pen, select the ERASER tab.

Customizes the amount of pressure needed to erase.

Select the [function](#) to perform when using the eraser.

Displays the eraser [FEEL DETAILS](#) dialog box where you can further customize the eraser sensitivity.

With your screen cursor positioned over an empty area of the control panel, press down on the pen display screen with your pen's eraser to test the current eraser feel setting. Use the CURRENT PRESSURE bar to determine how hard you must press on the eraser to reach maximum pressure.



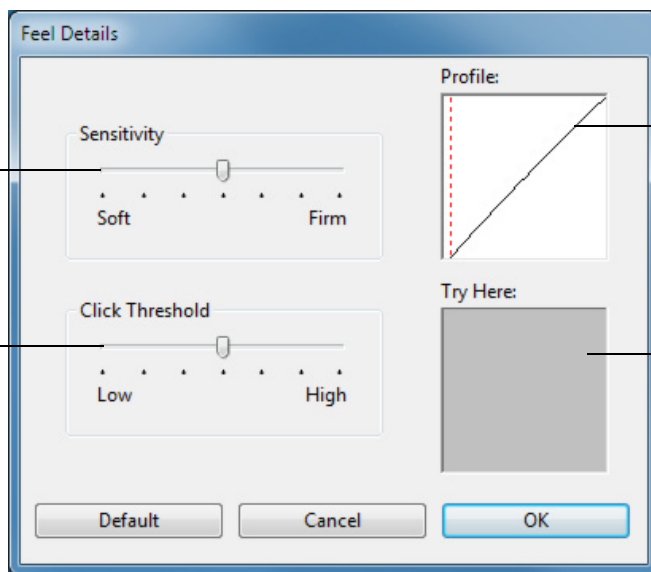
### ADVANCED TIP AND ERASER PRESSURE SETTINGS

To further customize tip or eraser pressure settings, from the PEN or ERASER tab click on the DETAILS... button. The options within the FEEL DETAILS dialog box enable you to change the tip or eraser pressure sensitivity and click threshold settings independently.

**Important:** In the PEN and ERASER tabs, these settings are adjusted simultaneously with the TIP FEEL or ERASER FEEL slider, which override the detail pressure settings.

Drag the slider to select a pressure sensitivity setting. If you have a soft touch, choose a softer setting.

Drag the slider to adjust the click threshold level. This setting determines the amount of force required to generate a tip click.



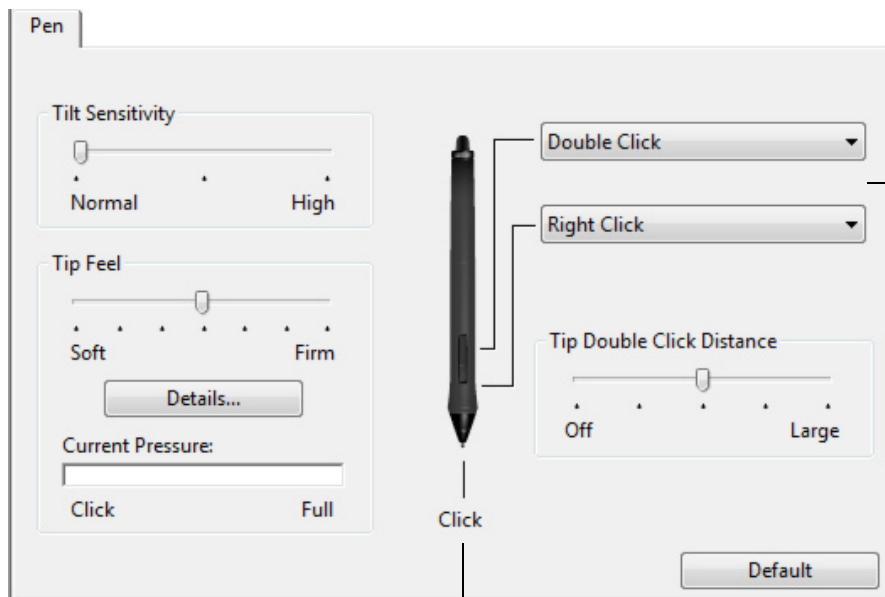
Graphically displays the selected pressure SENSITIVITY curve and CLICK THRESHOLD settings.

A curve that increases quickly makes the pen feel more sensitive.

Using your pen tip or eraser, make several strokes within the box to test the results of your changes.

## CUSTOMIZING TOOL BUTTONS

Select the PEN tab to change the functions assigned to the side switches and tip of your pen.



Select the [function](#) to perform when pressing the upper or lower side switch.

When you bring the pen tip within 5 mm (0.20 inch) of the tablet surface without touching the tablet and press the upper or lower side switch, the selected function occurs.

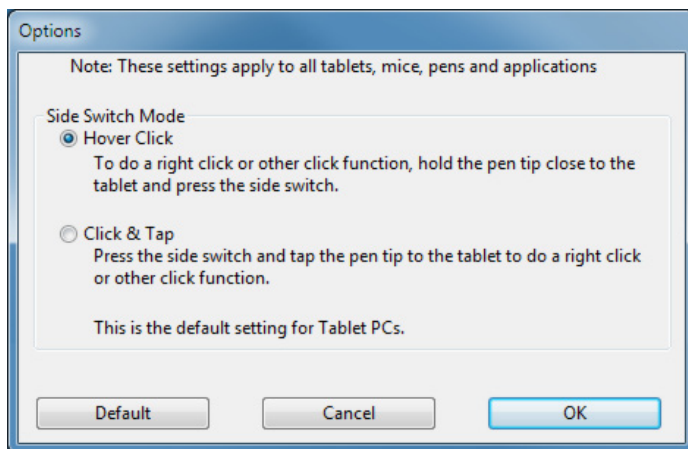
**Tip:** To make double-clicking easier, set the side switch to double-click automatically by selecting DOUBLE CLICK.

Double-click here to change the function assigned to the pen tip.

- At least one tool button should be set to the CLICK function.
- The tip must be set to CLICK in order to draw in most graphics applications.

You can change the SIDE SWITCH MODE to best fit the way you like to use the pen when making right-clicks or other click functions. To access these settings, click on the control panel OPTIONS... button. Select:

- HOVER CLICK to perform click functions without touching the pen tip to the pen display screen surface.
- CLICK & TAP to enable the precise placement of click functions. When selected, you must first press the side switch then touch the pen tip to the pen display screen surface in order perform the click function. This is the default setting for Tablet PCs.

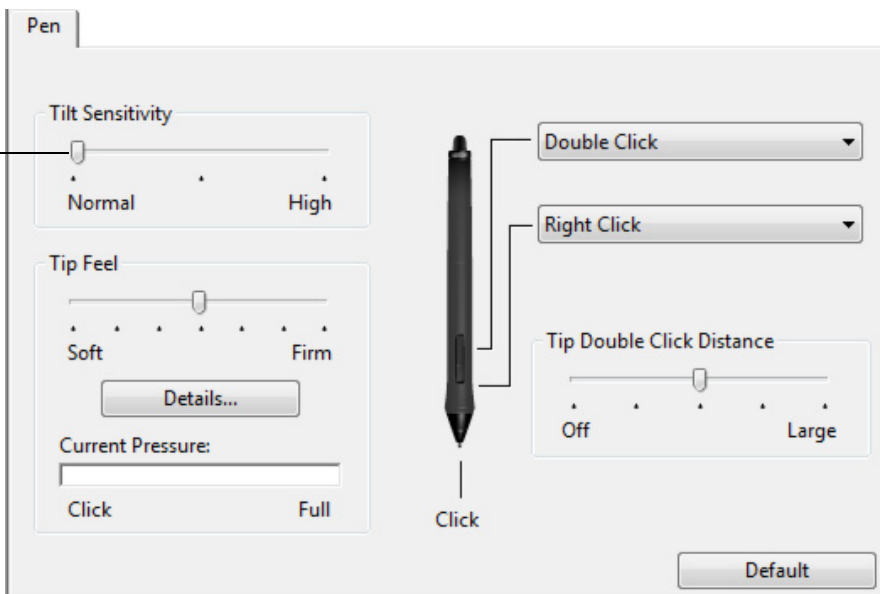


### CUSTOMIZING TILT SENSITIVITY

To adjust the tilt sensitivity of your pen, select the PEN tab. Tilt sensitivity determines how far you have to tilt the tool to produce the maximum tilt effect; you need to tilt the pen less at high sensitivity than at low sensitivity.

Drag the slider to increase or decrease TILT SENSITIVITY. Then test your new setting in an application that supports tilt. The tilt setting applies to both the tip and eraser of your tool.

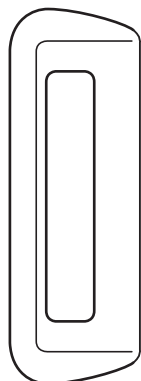
Tilt is direction sensitive and can be used in some applications to control brush orientation or other characteristics.



Visit the Wacom web site for a list of applications that currently support tilt.

### CUSTOMIZING PEN DISPLAY FUNCTIONS

To customize the interactive pen display, simply open the Wacom Tablet control panel and select the FUNCTIONS icon in the TOOL list. Select a tab to customize, and change settings using the available options.

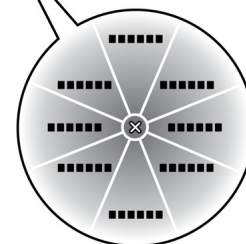
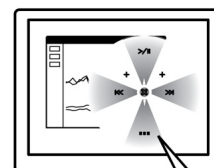


[Customizing the Touch Strips](#)

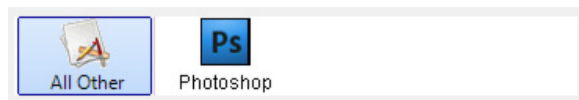


[Customizing ExpressKeys](#)

[Working with Display Toggle](#)



[Using and customizing the Radial Menu](#)



[Application-specific settings](#)

## CUSTOMIZING EXPRESSKEYS

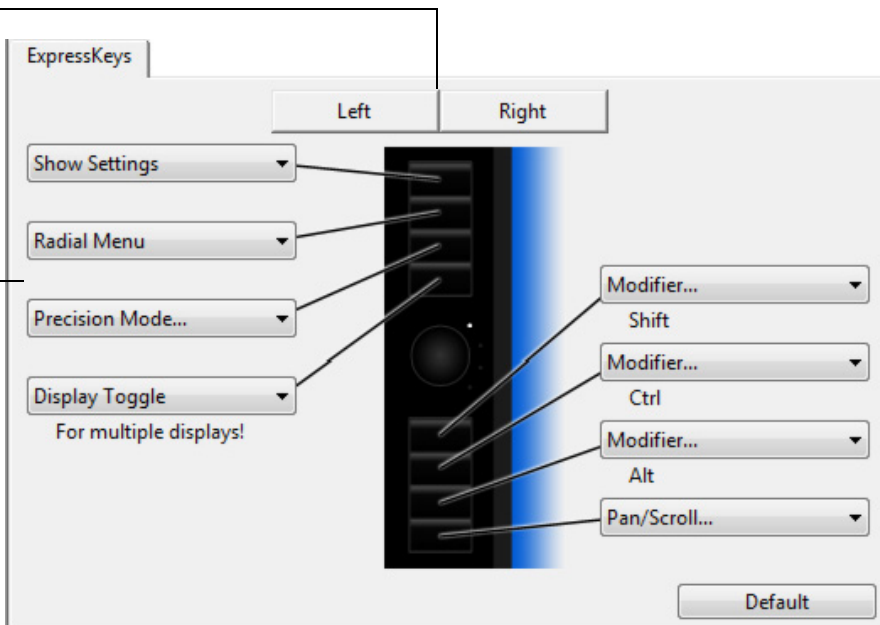
When you select the EXPRESSKEYS tab, the current functions are shown in the corresponding pull-down menu. Each key can be customized to perform a display toggle, modifier, keystroke, or other function.

Select LEFT or RIGHT to define which set of ExpressKeys to customize.

Use the pull-down menus to choose a [function](#) that will be performed when the key is pressed. Your choice is displayed either within the pull-down menu or beneath the menu.

ExpressKey functions can be defined for use with [specific applications](#).

Note: Options may vary, depending on your pen display model.



**Important:** Some applications can override and control the ExpressKey functions. For details, see [using applications integrated for tablet control](#).

## CUSTOMIZING THE TOUCH STRIPS

When you select the TOUCH STRIP tab, the currently set Touch Strip functions are displayed. Each Touch Strip can be customized to issue zooming, scrolling, or custom keystroke actions. You can also set Touch Strip functions to DISABLED. See your hardware manual for information on working with the Touch Strips.

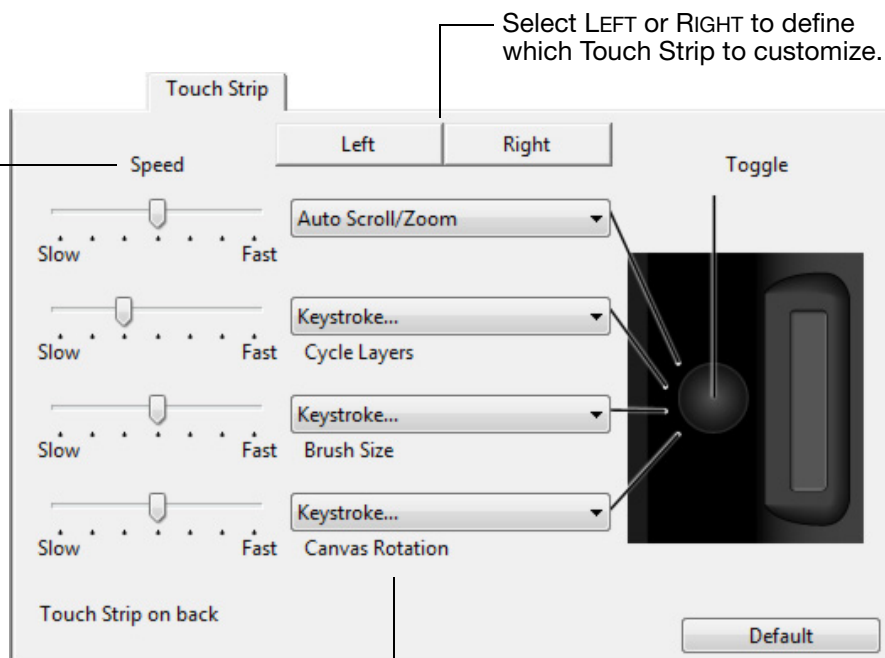
Touch Strip functions can be defined for use with specific applications. Any changes you make on this tab apply to the currently selected application in the control panel's APPLICATION list.

The SPEED setting can be customized for each function. This controls the rate at which zooming and scrolling occurs, or the speed at which keystroke events are sent to an application.

**Tips:**

- To zoom images around the current position of the screen cursor when working in Adobe Photoshop CS3 or later, open the Adobe Photoshop general preferences pane, check the ZOOM WITH SCROLL WHEEL option, and click OK.
- Press the Touch Strip toggle button to cycle between Touch Strip functions.

Note: Options may vary, depending on your pen display model.



Choose a function to perform when the Touch Strip is in use. Default settings are:

|                              |   |
|------------------------------|---|
| AUTO SCROLL/ZOOM             | Sets the Touch Strip to zoom in most graphics applications and scroll in most other applications. Page scrolling is not supported.<br>Move your finger up along the strip to zoom in or scroll down. Move your finger down to zoom out or scroll up.<br>Some applications may interpret zoom events as scroll events, or may completely ignore zooming. Likewise, scroll events may be interpreted as zoom events, or ignored completely. |
| KEYSTROKE... CYCLE LAYERS    | Sets the Touch Strip to cycle up or down through a stack of layers.   |
| KEYSTROKE... BRUSH SIZE      | Sets the Touch Strip to increase or decrease the brush size of your drawing tool.   |
| KEYSTROKE... CANVAS ROTATION | Enables you to rotate or flip an entire image in Adobe Photoshop CS4 or later.  |

To customize a Touch Strip for other actions, select the KEYSTROKE... option. You can then define a custom [keystroke](#) function. To learn which keystrokes are supported by a particular application, see the documentation that came with that application.

Choose SKIP to set the Touch Strip toggle button to skip a function state in the toggle sequence.

**Important:** Some applications can override and control the Touch Strip functions. For details see [using applications integrated for tablet control](#).

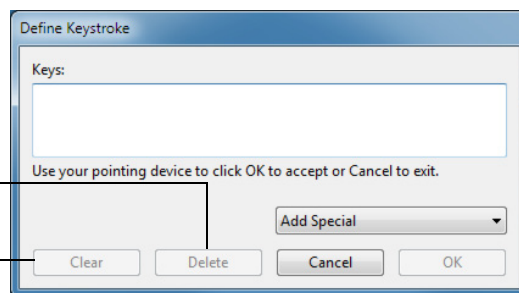
## BUTTON FUNCTIONS

The following options are available for tool button, tablet control, or Radial Menu settings. Not all options are available for all controls or pen display models.

| FUNCTION NAME  | DESCRIPTION   |
|----------------|---|
| CLICKS         |   |
| • CLICK        | Simulates a primary mouse button click. Be sure at least one button performs this function so you can always navigate and click.  |
| • RIGHT CLICK  | Simulates a right mouse button click, which displays a context menu.  |
| • MIDDLE CLICK | Simulates a middle mouse button click.  |
| • DOUBLE CLICK | Simulates a double-click. For easier double-clicking, use this function instead of tapping twice with the pen tip.  |
| • CLICK LOCK   | Simulates holding down the primary mouse button. Press the tool button once to initiate click lock. Press the button again to release click lock. Click lock is useful for dragging objects or selecting blocks of text.  |
| • 4TH CLICK    | Simulates a 4th mouse button click.   |
| • 5TH CLICK    | Simulates a 5th mouse button click.   |
| KEYSTROKE...   | <p>Enables you to simulate keystrokes. Select this option to display the DEFINE KEYSTROKE dialog box.</p> <p>Enter a keystroke or keystroke combination in the KEYS entry box. Keystroke combinations can include letters, numbers, function keys (such as F3) and modifier keys (such as SHIFT, ALT, or CTRL for Windows, or SHIFT, OPTION, COMMAND, and CONTROL for Macintosh). You can also select special keystrokes or keystroke combinations from the ADD SPECIAL drop-down menu.</p> <p>After defining a keystroke or keystroke sequence, click OK.</p> <p><b>Important: Because the ENTER (Windows) and RETURN (Macintosh) keys can be selected as a defined keystroke, they cannot be used to select OK. You must use your Cintiq input tool to click on the OK button.</b></p> <p>If prompted, enter a name for the keystroke definition. The name will be displayed with the respective control or in the Radial Menu, as applicable.</p> <p>You can create different keystroke functions for different applications. See <a href="#">application-specific settings</a>.</p> |

Deletes only the last entry in the keystroke entry box.

Clears the keystroke entry box.



To learn which keystroke shortcuts are supported by a particular application, see the documentation that came with the application.





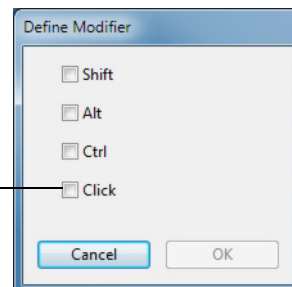
FUNCTION NAME

DESCRIPTION

MODIFIER..

Enables you to simulate modifier key(s) (such as SHIFT, ALT, or CTRL for Windows, or SHIFT, OPTION, COMMAND, and CONTROL for Macintosh). Many applications use modifier keys to constrain the size or placement of objects.

Choose one or more modifier key options. Select the CLICK box if you want a mouse click to occur whenever you press the pen button.



RADIAL MENU

Displays a [Radial Menu](#) on your screen. Each level of the hierarchical menu consists of eight menu slices which may contain various features and options to choose from.

BACK

Simulates the BACK command in browser applications.

FORWARD

Simulates the FORWARD command in browser applications.

PAN/SCROLL...

Enables you to position a document or image in any direction within the active pane by pressing a button set for PAN/SCROLL and then dragging with the pen tip across the pen display screen active area.

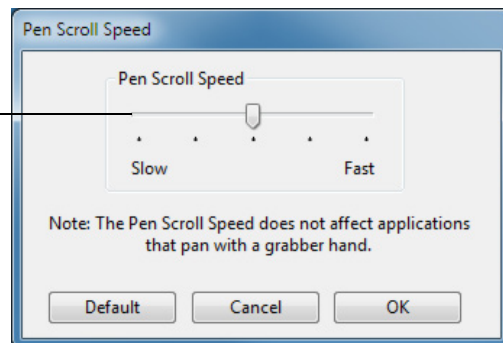
When you select PAN/SCROLL, the PEN SCROLL SPEED dialog box prompts you to set a scrolling speed for use in applications that do not support grabber hand (pixel-level) panning within a document or image.

A slower setting reduces the scroll rate and is useful for close-up and detail work where you need precise control of the image.

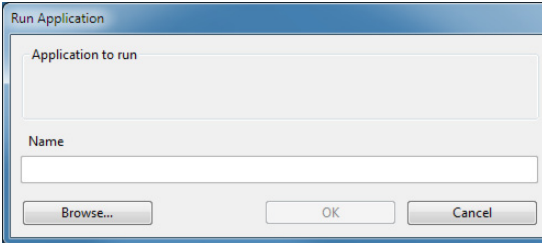
As you move the pen tip, the document or image is repositioned to follow the direction of pen movement on the pen display screen surface.

Release the button or lift the pen tip from the display screen surface when you are done.

In some application windows the document will precisely follow the screen cursor as you move the pen tip, while in others it will simply move in the same general direction as the screen cursor.





| FUNCTION NAME      | DESCRIPTION   |
|--------------------|---|
| SHOW DESKTOP       | Minimizes all open windows to display a clean desktop.  |
| SWITCH APPLICATION | Brings up the application switching dialog with focus on the next open application. On Windows 7 or Vista systems running Aero, Flip 3D will be activated with focus on the next open applications.   |
| OPEN/RUN...        | <p>Opens a dialog box where you can select a specific application, file, or script to launch.</p> <p>Click BROWSE... to locate an application, file, or script to launch. The selection you make appears in the APPLICATION TO RUN box. Click OK to accept the selection.</p>  <p>The dialog box will close and the OPEN/RUN... option you have selected will be assigned as your tool button option. Simply press the tool button to launch the assigned option.</p> <p>If your selection is for the Radial Menu, it will be displayed in the Radial Menu.</p> |
| INK TOGGLE         | (Macintosh.) Toggles the “ink in any application” function of Ink on and off. Ink automatically recognizes and converts your handwriting into text and inserts it into a document. Handwriting recognition must be turned on for this function to work. See your Macintosh help for information on working with Ink.  |
| EXPOSÉ             | (Macintosh.) Tiles all open windows. To access this option, first choose KEYSTROKE... and then click on the ADD SPECIAL menu within the dialog box.   |
| PRESSURE HOLD      | Locks the pressure at the current pressure level until the button is released. For example, you can paint with pressure sensitivity until you reach the brush size that you like. You can then press the button and continue painting with the same size brush until the button is released.  |
| PRECISION MODE     | <p>Changes the mapping around the current pen tip position such that you must move the pen twice as far for the screen cursor to cover the same distance on the display screen. To activate, press and hold the tool button to which this function has been assigned. Releasing the button returns to normal mapping.</p> <p>When your pen is in mouse mode, screen cursor movement is adjusted to act as if acceleration were off and speed set to slow.</p>   |
| DISPLAY TOGGLE     | For multiple monitor systems. Enables you to toggle the screen cursor between the Cintiq pen display and your other displays. When selected, Cintiq can be used either as a pen display (the screen cursor is positioned at the pen tip location) or as a standard Wacom tablet (the screen cursor can be moved across the entire desktop or additional displays). See <a href="#">working with Display Toggle</a> .  |

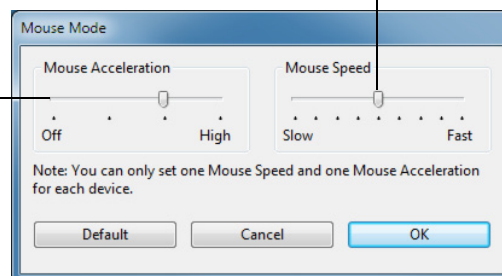


**FUNCTION NAME**                      **DESCRIPTION**

**MODE TOGGLE...**                      Toggles between [pen mode](#) and [mouse mode](#). When first setting a pen button to MODE TOGGLE..., the MOUSE MODE dialog box is displayed where you can adjust the mouse acceleration and speed.

Sets the screen cursor tracking speed when in mouse mode.

Sets the screen cursor acceleration when in mouse mode.



Mouse mode settings can be accessed from a number of different locations within the control panel. However, for each input tool and application that you are customizing, only one MOUSE ACCELERATION and SPEED setting can be made.

The mouse mode acceleration and speed settings are independent of system settings. Changes you make to these settings in the Wacom Tablet control panel do not affect similar system settings. However, changes made to similar system settings may affect your pen display settings.

**ERASE**                                      Default setting for the eraser. See your hardware manual for information on using the eraser.

**SHOW SETTINGS**                      Displays a diagram (on your display screen) of the tablet ExpressKeys and Touch Strips showing the current function settings for each control.

**TABLET PC**

- **TABLET PC INPUT PANEL**                      (Tablet PCs and Windows systems that support the Tablet PC Input Panel.) Opens the Tablet PC input panel when you press a tool button set to this function.
- **JOURNAL**                                      (Windows 7 and Vista, and Tablet PC systems that include Microsoft Journal.) Opens Microsoft Journal.
- **TABLET PC DEFINED**                      (Tablet PCs and Windows systems that support the Tablet PC Input Panel.) Sets the button function according to settings found in the:
  - Windows 7 and Vista TABLET PC SETTINGS and PEN AND INPUT DEVICES control panels.
  - Windows XP Tablet Edition TABLET AND PEN SETTINGS control panel.

**DISABLED**                                      Disables the button function.

**APPLICATION DEFINED**                      Reports only the button number to the application. This is for applications, such as CAD programs, that have built-in tablet support.

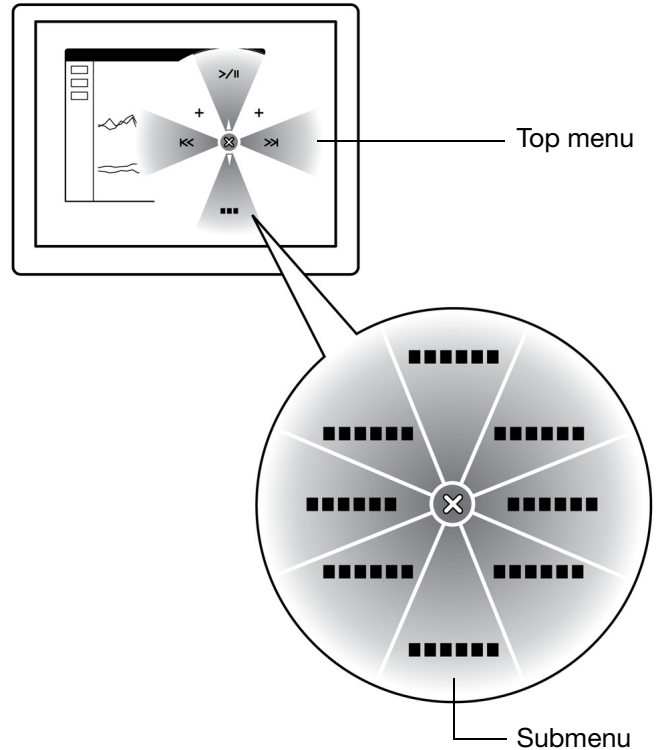
**DEFAULT**                                      Returns a button to its default setting.

**HELP**    Activates a display of the current ExpressKey and Touch Strip settings.

## USING AND CUSTOMIZING THE RADIAL MENU

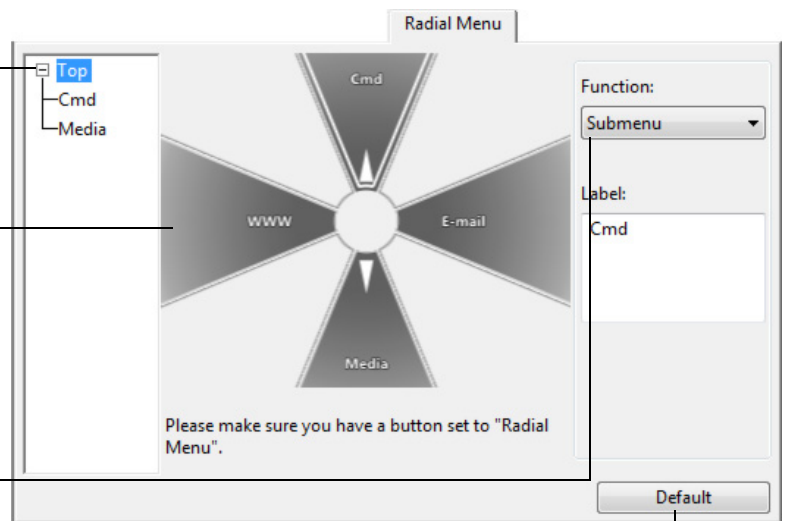
The Radial Menu is a circular pop-up menu that provides quick access to editing, navigation, media control functions, and more.

- To display the Radial Menu, set a tool button or ExpressKey to the RADIAL MENU function. Whenever you press that button, the Radial Menu is displayed centered at the screen cursor position.
- The hierarchical Radial Menu appears in circular format, extending over the entire desktop. Each level of the menu consists of eight control slices which may contain various features and options to choose from.
- Select an available option by clicking on it within the Radial Menu. Some selections may display a submenu where you can then choose from the available options.  
Holding down the button that opens the Radial Menu allows you to click on a menu item without closing the Radial Menu.
- The menu closes after you make a selection. To close the Radial Menu without making a selection, click on the 'X' located at the center of the menu or on a control slice that has no function assigned to it. You can also again press the button used to display the menu.



Use the RADIAL MENU tab to customize the available functions on the Radial Menu.

1. Select a menu or submenu to customize.
2. Select a control slice for which to customize settings.
3. Choose the function(s) to perform.



Note: Press the ENTER (RETURN) key to add multiple lines of text.

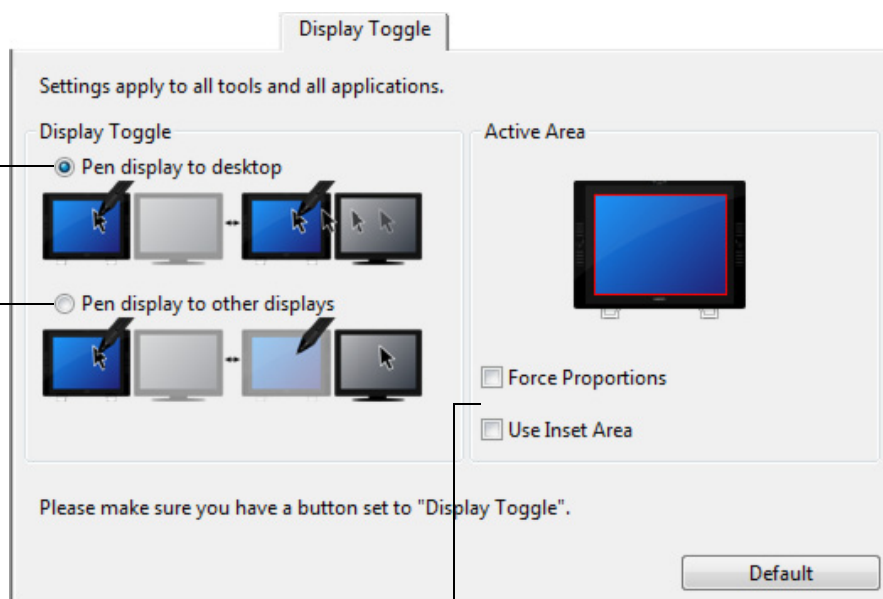
Returns the currently displayed Radial Menu layout to its default values.

## WORKING WITH DISPLAY TOGGLE

DISPLAY TOGGLE is available only on multiple monitor systems. The feature allows you to use your pen on the interactive pen display to navigate the screen cursor to any display on your system. After setting an ExpressKey or a pen side switch to the DISPLAY TOGGLE function, you can then press that button to toggle the screen cursor between Cintiq and your other displays. For example, Cintiq can be used as a pen display where the screen cursor is positioned at the pen tip location, or toggled for use as a standard Wacom tablet where the screen cursor can be moved across the entire desktop or additional displays.

When you open the Wacom Tablet control panel and Cintiq is the selected tablet, the DISPLAY TOGGLE tab will be available if the system has two or more displays. The DISPLAY TOGGLE tab enables you to define how the tablet mapping will be applied to each toggled display.

- When PEN DISPLAY TO DESKTOP is selected and you press a tool button that has been assigned the DISPLAY TOGGLE function, the screen cursor will toggle from your Cintiq to the entire system desktop. Pressing the tool button a second time returns the screen cursor to Cintiq.
- When PEN DISPLAY TO OTHER DISPLAYS is selected and you press the tool button, the screen cursor is toggled from your Cintiq to another active pen display or monitor. If additional displays are attached to the system, the screen cursor will toggle to each display in turn until it returns to the Cintiq from where the initial toggle began.



ACTIVE AREA options enable you to determine the size of the area where the pen is functional on the pen display. When you make a selection, the red indicator updates to illustrate your choice.

- FORCE PROPORTIONS adjusts the size of the tablet’s active area to maintain correct vertical and horizontal proportions between Cintiq and the entire desktop or newly mapped-to display. Depending on your settings, some portions of the tablet active area may no longer be usable when this option is selected. When deselected, the correct scale or proportions are not maintained. For example, drawing a circle on the pen display may create an ellipse on a mapped-to display screen.
- USE INSET AREA limits the tablet’s active area to a sizing of 6 x 8 inches. If FORCE PROPORTIONS is also selected, this sizing may be less. When deselected, as much as possible of the entire tablet active area will be used for tablet-to-display mapping.

**Important:** If you are using application-specific settings with DISPLAY TOGGLE, make sure each customized application in the APPLICATION list (including ALL OTHER) has a tool button that is assigned to DISPLAY TOGGLE. The easiest way to do this is to assign DISPLAY TOGGLE to an ExpressKey prior to creating any application-specific settings.



## WORKING WITH MULTIPLE MONITORS

When you are working with Cintiq and additional monitors on the same system, the screen cursor movement on the standard monitors will depend on your system configuration.

If a second monitor is connected in mirror mode, both Cintiq and the other monitor will show identical images and screen cursor movement.

If you are using Cintiq with other monitors in extended monitor mode, you have several options for navigating on the other monitors:

- Set an ExpressKey or pen side switch to the DISPLAY TOGGLE function. You can then press the button to toggle the screen cursor between Cintiq and your other displays. For example, Cintiq can be used as a pen display (the screen cursor is positioned at the pen tip location) or toggled for use as a standard Wacom tablet (the screen cursor can be moved across the entire desktop or additional displays). See [working with Display Toggle](#) for more information.
- Set a pen side switch or an ExpressKey to MODE TOGGLE. You can then quickly switch between pen mode for working on Cintiq and mouse mode for working on the other monitors.

You can also purchase an Intuos4 tablet and use it to work on the other monitors in PEN mode. The pen will work on both Cintiq and the Intuos4 tablet.

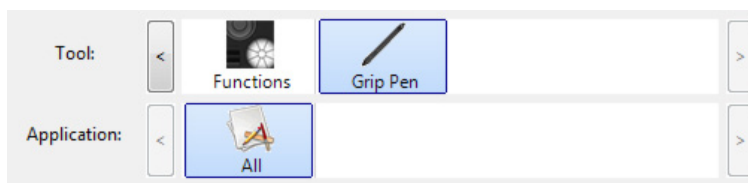




## APPLICATION-SPECIFIC SETTINGS

You can customize your tools for use with a particular application. For example, you may prefer a firm pen tip pressure setting in one application and a soft pressure setting in another. The APPLICATION list enables you to add an individual application to the list and then customize your tool settings for that application.

- When no application-specific settings have been created and a tool is selected from the TOOL list, the APPLICATION list displays the ALL icon which contains tool settings that apply to all of your applications. In the example below, no application-specific settings have been added for the GRIP PEN. The ALL icon is displayed and the GRIP PEN will have the same settings in all applications.



- When application-specific settings are added to the APPLICATION list, the ALL icon changes to ALL OTHER, and an application icon is displayed for the newly added application(s).



In the example above, application-specific settings have been added for the GRIP PEN. If you select the ALL OTHER icon and make changes to the tab settings, your changes will apply to the GRIP PEN in all applications except those which you have added to the APPLICATION list. If you select an application icon and make changes to the tab settings, your changes will apply to the GRIP PEN only while you are using that application.

When you create application-specific settings, you are creating a separate group of settings for the selected tool and application. See the following sections for more details:

[Creating an application-specific setting](#)

[Changing application-specific settings](#)

[Removing application-specific settings](#)

**Tip:** To review the ExpressKeys or Touch Strip function settings for the front-most application, set an ExpressKey to SHOW SETTINGS and press the key at any time.





## CREATING AN APPLICATION-SPECIFIC SETTING

First choose the pen display and input tool for which you want to create an application-specific setting. Then click on the APPLICATION list's [ + ] button to display the ADD APPLICATION FOR CUSTOM SETTINGS dialog box.

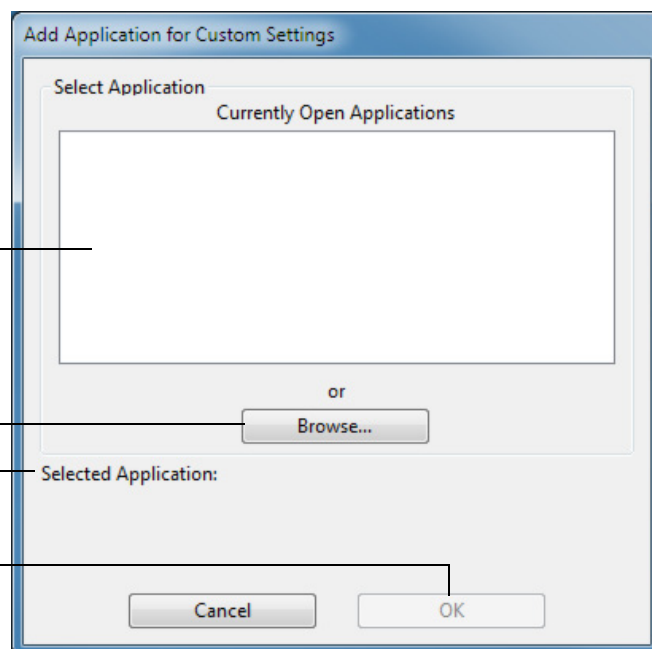
Choose from one of two methods to select an application:

- Open the application for which you want to create custom settings, and then select that application from the CURRENTLY OPEN APPLICATIONS box.
- BROWSE to select the executable file of any application installed on your computer.

Your selection is added to the SELECTED APPLICATION box where the name of the selected application is displayed.

Click OK to complete the process.

Note: If two programs have the same executable file name, they will share the same customized settings.



After adding an application, its icon appears in the APPLICATION list whenever the respective tool is selected in the TOOL list. Select the application and then customize the control panel tab settings for your tool and the selected application.

Once you have created application-specific settings, applications that have not been customized in this manner will use the tool settings for ALL OTHER.

**Tip:** First customize settings for one application. When you feel comfortable with the process, you can create more application-specific settings.

## CHANGING APPLICATION-SPECIFIC SETTINGS

To change tool settings for a specific application, select the tool and the application. Then customize the tab settings.

## REMOVING APPLICATION-SPECIFIC SETTINGS

To remove an application-specific setting:

1. In the TOOL list, select the tool from which you want to remove the application-specific setting. Then, in the APPLICATION list select the application you want to remove from the list.
2. Click on the APPLICATION list's [ - ] button. In the dialog box that appears, click DELETE to confirm your selection. The selected application is removed from the list, along with any custom tool settings that you may have created for it.

**Tip:** To quickly remove all application-specific settings from a single tool, remove the tool from the TOOL list. Then place the tool back on the pen display. The tool will be added back to the TOOL list using the default settings.

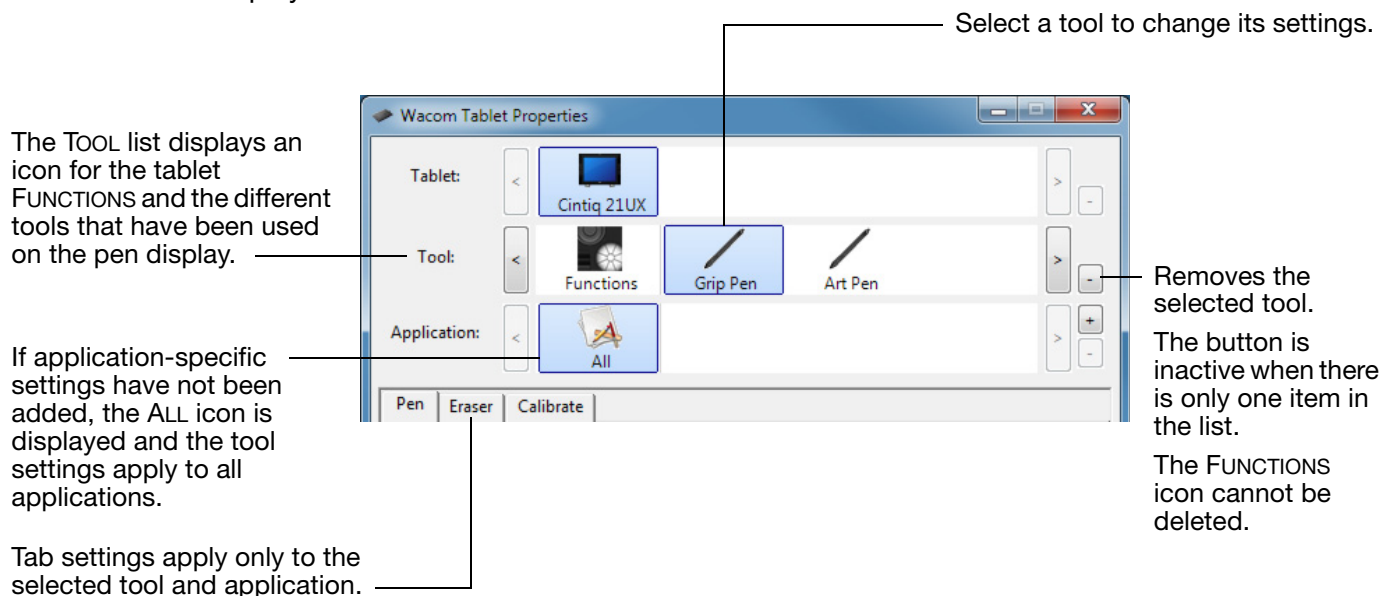






## WORKING WITH MULTIPLE TOOLS

The Wacom Tablet control panel is designed to help you customize and keep track of the settings for your Cintiq tools. The tool you use to open the control panel is automatically selected, and the appropriate tabs for that tool are displayed.



To add a different tool to the control panel's TOOL list, simply use the tool on your interactive pen display.

- When you select a tool that has been added to the TOOL list, the appropriate tab settings for that tool are displayed. Any changes you make to the tab settings will then apply to the tool. Your changes take effect immediately.

If a similar tool was previously added, the new tool will inherit the settings of the previously added tool. These settings can then be customized for the newly added tool.

- Identical tools will use the same settings.

To remove a selected tool from the TOOL list, click on the TOOL list's [ - ] button. In the dialog box that appears, click DELETE to confirm your selection. The selected tool is removed from the list, along with any custom settings you may have created for it. (A removed tool can be added back to the TOOL list by placing it back onto the tablet.)

All Cintiq tools have a unique Tool ID. In supporting applications, such as Corel Painter, you can assign different tools to different pens and then change between them by switching the pen in your hand.



## CHANGING THE TABLET MODE

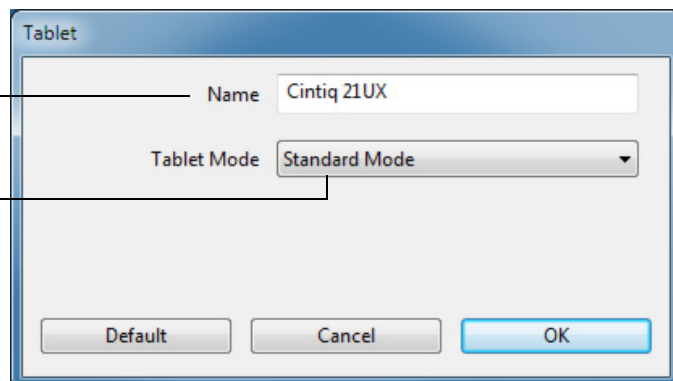
Within the control panel's TABLET list, double-click on the pen display icon to display the TABLET dialog box. The TABLET mode settings apply to all tools and applications.

Note: This option may not be available for all pen display models.

If desired, enter a new name to be used for the pen display icon.

STANDARD MODE is recommended for graphics applications.

Choose RECOGNITION MODE for the maximum data rate. Required by some handwriting recognition software.

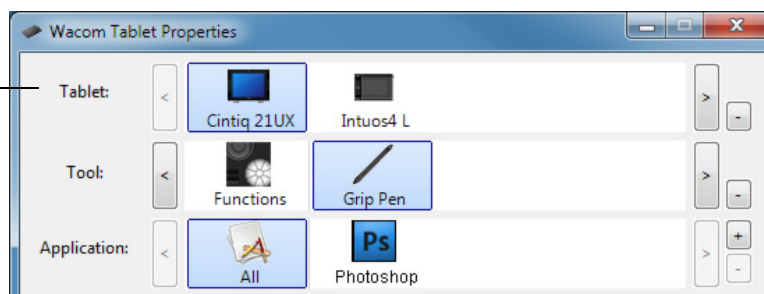


## INSTALLING MULTIPLE TABLETS

The TABLET list displays an icon for any supported pen display or tablet that has been detected on your system, and allows you to select the pen display or tablet for which your changes will apply.

Select a pen display or tablet icon for which to customize tool and application settings.

- The control panel will not launch unless a supported pen display or tablet is connected to the computer.
- Settings can only be viewed or changed for an attached pen display or tablet.



To add a new pen display or tablet, connect it to your computer. The system will automatically find the pen display or tablet and initialize it. An icon for the pen display or tablet will then appear in the control panel.

**Important:** When installing additional pen display units or tablets on Windows systems, please note that the eraser function may not work in some applications when using the additional pen display unit(s) or tablet(s). The eraser function will continue to work correctly using the first pen display or tablet that was added to the control panel.

To remove one of multiple pen displays or tablets from the driver, in the Wacom Tablet control panel select the pen display or tablet to be deleted and click on the [ - ] button next to the TABLET list.

- A pen display or tablet cannot be deleted from the control panel list unless it is attached to the computer.
- Note that you will need to restart your computer before you can again add the tablet to the driver.



## MANAGING PREFERENCES

Use the Wacom tablet preferences utility to manage your pen display preferences for a single or multiple users.

For Windows, first close any open applications. Then open the utility by clicking the START icon and selecting ALL PROGRAMS. Select WACOM TABLET and WACOM TABLET PREFERENCE FILE UTILITY.

- To remove preferences for the current user, click on the REMOVE button under MY PREFERENCES.
- To delete preferences for multiple users, click on the REMOVE button under ALL USER PREFERENCES. Administrator rights are required to delete preferences for all users. Relaunch any currently open tablet-aware applications that you may be running.
- To back up your preferences, click on the BACKUP... button under MY PREFERENCES.
- To restore preferences that you had previously backed up, click on the RESTORE... button under MY PREFERENCES.

Be sure to carefully follow any prompts that may appear.

For Macintosh, open the main APPLICATIONS folder. Then open the WACOM TABLET folder and run the WACOM TABLET UTILITY.

- To remove preferences, select CURRENT USER or ALL USERS. Then click on the REMOVE button. Log out, then log back in. When the software driver loads it will create a new preferences file with the factory defaults.
- To back up your preferences, select CURRENT USER or ALL USERS. Then click on the BACKUP... button.
- To restore preferences that you had previously backed up, select CURRENT USER or ALL USERS. Then click on the RESTORE... button.

Be sure to carefully follow any prompts that may appear.





## USING APPLICATIONS INTEGRATED FOR TABLET CONTROL

Some software applications may be designed to directly control the pen tablet ExpressKeys or Touch Strip function(s). When working in an application that has been integrated in this manner, the ExpressKeys or Touch Strips may perform a different function than what is currently set in the Wacom Tablet control panel.

- When an ExpressKey is overridden by an application, the ExpressKey setting will automatically update, using either the new function name or “Application Defined”. Some or all of the ExpressKeys may be overridden, depending on the application.
- When an application overrides the Touch Strip, all Touch Strip functions are affected. If an application overrides only one, two, or three of the available Touch Strip functions, the remaining function(s) are set to SKIP.
- An integrated application will control the ExpressKeys or Touch Strip only when that application is active and in the foreground. When you close that application (or select a new application pane to work in), your Wacom Tablet control panel settings are returned to their previous state.
- To review the ExpressKeys or Touch Strip function settings for the current front-most application, set an ExpressKey to SHOW SETTINGS or HELP and press the key at any time.

Applications that have been integrated in this manner will typically provide you with the opportunity to opt-out or disable this functionality when first using your Wacom tablet with the application. See the documentation provided with your application for any specific details on functionality and how to customize or disable this feature.

If an automatic prompt or the application’s documentation does not describe how to disable this behavior, you can use the Wacom Tablet control panel to create [application-specific settings](#) which will override the behavior of the integrated application.

**Important:** If an application-specific setting has been created for an integrated application, setting an ExpressKey or Touch Strip function to APPLICATION DEFINED will allow the integrated application to control the function.





## IMPORTING EXPERT SETTINGS

The import expert settings feature enables you to import customized Wacom Tablet control panel settings that have been specified in an XML (Extensible Markup Language) file.

- Some software developers may create custom settings files which are specifically designed to provide optimum performance when using your Wacom product with their applications.
- Visit the Wacom web site for your region to choose from a variety of custom settings files that may be available for your product.

Each XML file may include customized settings for one or more applications. These settings may apply to the ExpressKey, Touch Strip, Radial Menu, or pen button and eraser functions.

### To import expert settings:

1. Choose an XML file with settings for use with a particular application. Double-click on your file selection.
2. Carefully read and follow the instructions in the confirmation dialog that will appear.
  - The utility will import settings for one or more applications. Any previous settings for those applications may be overridden.
  - You are encouraged to back up any existing control panel settings before importing the expert settings.
  - You can cancel, or continue to import the settings.
3. When you choose to import settings, only the settings specified in the XML file will be imported. Any corresponding settings will be overridden with the new values. All other existing settings will remain unchanged.
4. After the import process is completed you will have an opportunity to view the new settings within the Wacom Tablet control panel.





## GLOSSARY

**Active area.** The area of the pen display where your Cintiq input tools are detected.

**Application-specific settings.** Cintiq tool and tablet settings that have been customized for individual applications. The Wacom Tablet control panel enables you to customize a tool to behave uniquely in different applications. [Application-specific settings](#) are in effect whenever you use the application.

**Aspect.** The ratio between the vertical and horizontal dimension of the active area on the pen display.

**Click force.** The amount of force you must apply to the pen tip for a click to occur.

**Double-click assist.** A function of the Wacom Tablet control panel that makes it easier to double-click by setting the size of the double-click distance.

**Double-click distance.** The maximum distance (in screen pixels) that the cursor can move between clicks and still be accepted as a double-click. Increasing the double-click distance makes double-clicking easier, but may cause a delay in brush strokes in some graphics applications.

**Eraser-aware application.** A software application that has built-in support for the pen eraser. These applications take advantage of the eraser in different ways, depending on what makes sense for the application.

**ExpressKeys.** The customizable control keys located on your Cintiq interactive pen display.

**Fingerwheel.** The control wheel on the optional Airbrush.

**Journal.** A Microsoft Windows application that electronically simulates a physical journal pad, but with the advantages of digital note taking. For example, you can create quick sketches and jot handwritten notes that can be converted to text and sent on to colleagues for digital mark-up. Journal includes a variety of pen, marker, and highlighter tools, plus an eraser that is easily activated by the eraser end of your Wacom pen. Additionally, your handwritten content is searchable within Journal.

**Modifier.** Modifier keys include SHIFT, ALT, and CTRL for Windows, or SHIFT, CONTROL, COMMAND, and OPTION for Macintosh. You can customize your Cintiq tool buttons or ExpressKeys to simulate a modifier key.

**Mouse acceleration.** A setting that allows you to adjust the screen cursor acceleration when using mouse mode.

**Mouse mode.** A method for positioning the screen cursor. When you place a Cintiq input tool on the tablet, you can move the screen cursor with a “pick up and slide” motion similar to using a traditional mouse. This is known as relative positioning. See also [pen mode](#).

**Mouse speed.** A setting that allows you to adjust the speed at which your screen cursor moves when using mouse mode.

**Nib.** The replaceable pen tip.





**Pen mode.** A method of positioning the screen cursor. Wherever you place your Cintiq input tool on the pen display tablet, the screen cursor will jump to the corresponding point on the screen. This is known as absolute positioning, and is the default setting for the pen. Also, pen mode allows you to quickly position the screen cursor without having to first find it and then move it across the desktop. See also [mouse mode](#).

**Pixel.** The smallest unit of measure on your display screen.

**Pressure sensitive.** A quality of the Wacom pen tip and eraser that senses the amount of pressure being applied. This is used to create natural-looking pen, brush, and eraser strokes in applications that are pressure sensitive.

**Pressure-sensitive application.** Any application that supports pressure-sensitive input.

**Proximity.** The height above the pen display [active area](#) where the Cintiq input tools are detected.

**Radial Menu.** A hierarchical menu (in radial format). Each level of the menu consists of eight menu slices which may contain various features and options to choose from. You can customize the buttons of your pen to display this menu.

**Screen cursor.** The pointer on the display screen. Screen cursors come in different shapes (such as an I-beam, arrow, or box), depending on which application you are running.

**Tablet PC Input Panel (TIP).** The Microsoft Windows Tablet PC Input Panel enables you to use your Wacom pen to create handwritten notes or work with an on-screen keyboard. The Input Panel dynamically converts your handwriting to text. The information you create can then be inserted into other documents, spreadsheets, or illustrations.

**Tilt sensitive.** A quality of the pen tip and eraser that senses the amount of tilt between the tool and tablet. This is used to create natural-looking pen, brush, and eraser strokes in applications that are tilt sensitive.

**Tool ID.** A unique serial number in each Cintiq input tool. Some graphics applications, such as Corel Painter, recognize Tool IDs and allow you to assign different settings and brushes to every Cintiq tool (e.g., two Grip Pens). Switching between the settings and brushes then becomes as easy as switching between the two pens.

**USB.** Universal Serial Bus. A hardware interface standard for connecting computer peripheral devices. USB ports support hot-plugging, which allows you to connect or disconnect a USB device without turning off your computer.

**Wintab.** An interface standard used by Windows applications for receiving tablet information. Cintiq supports all Wintab-compatible applications under Windows.





## INDEX

|   |    |  |    |
|---|----|--|----|
| About the manual                            | 2  | Features, control panel                    | 5  |
| Adding a new tool                           | 25 | Functions, button                          | 16 |
| Applications, integrated for tablet control | 28 | Installing multiple tablets                | 26 |
| Application-specific settings               |    | Manual                                     |    |
| changing settings                           | 24 | about                                      | 2  |
| creating                                    | 24 | navigating                                 | 3  |
| removing                                    | 24 | Monitors, using Cintiq with others         | 22 |
| working with                                | 23 | Multiple tablets, installing               | 26 |
| Button functions                            | 16 | Multiple tools, working with               | 25 |
| Calibrating, pen display                    | 7  | Navigating the manual                      | 3  |
| Control panel                               |    | New tool, adding                           | 25 |
| features                                    | 5  | Pen, customizing                           | 9  |
| lists                                       | 6  | Pens, optional                             | 9  |
| opening                                     | 4  | Pitch and phase, adjusting                 | 8  |
| tabs  | 6  | Preferences, managing                      | 27 |
| Customizing                                 |    | Radial Menu                                |    |
| double-click                                | 10 | customizing                                | 20 |
| eraser feel                                 | 11 | using                                      | 20 |
| advanced                                    | 11 | Removing settings                          | 24 |
| ExpressKeys                                 | 14 | Settings                                   |    |
| pen   | 9  | changing for specific application and tool | 24 |
| Radial Menu                                 | 20 | removing                                   | 24 |
| tablet                                      | 13 | Tablet                                     |    |
| ExpressKeys                                 | 14 | customizing                                | 13 |
| Touch Strips                                | 15 | Expresskeys, customizing                   | 14 |
| tilt sensitivity                            | 13 | mode, changing                             | 26 |
| tip feel                                    | 10 | Touch Strips, customizing                  | 15 |
| advanced                                    | 11 | Tilt sensitivity, customizing              | 13 |
| tool buttons                                | 12 | Tip feel, customizing                      | 10 |
| Touch Strips                                | 15 | advanced                                   | 11 |
| Display Toggle, working with                | 21 | Tool buttons, customizing                  | 12 |
| Double-click, customizing                   | 10 | Touch Strips, customizing                  | 15 |
| Eraser feel, customizing                    | 11 |  |    |
| advanced                                    | 11 |  |    |
| Expert settings, importing                  | 29 |  |    |







Wacom Cintiq®

Software User's Manual

Version 5.0, Rev L2809

Copyright © Wacom Co., Ltd., 2009

All rights reserved. No part of this manual may be reproduced except for your express personal use. Wacom reserves the right to revise this publication without obligation to provide notification of such changes. Wacom does its best to provide current and accurate information in this manual. However, Wacom reserves the right to change any specifications and product configurations at its discretion, without prior notice and without obligation to include such changes in this manual.

The above year indicates when this manual was prepared. However, the date of release to the users of the "manual" is simultaneous with the introduction into the market of the applicable Wacom product.

Tool ID and DuoSwitch are trademarks, and Cintiq and Wacom are registered trademarks of Wacom Co., Ltd.

Adobe, Reader, and Photoshop are either registered trademarks or trademarks of Adobe systems Incorporated in the United States and/or other countries. Microsoft, Windows, and Vista are either registered trademarks or trademarks of Microsoft Corporation in the United States and/or other countries. Apple, the Apple logo, and Macintosh are trademarks of Apple Computer, Inc., registered in the U.S. and other countries.

Any additional company and product names mentioned in this documentation may be trademarked and/or registered as trademarks. Mention of third-party products is for informational purposes only and constitutes neither an endorsement nor a recommendation. Wacom assumes no responsibility with regard to the performance or use of these products.

ExpressKey is a registered trademark of Ginsan Industries, Inc., and is used with permission.

