



Store

Mac

iPod + iTunes

iPhone

Downloads

Support

MacBook
MacBook

Overview

Design

Features

Wireless

Mac OS X + iLife

Tech Specs

Français

[Buy Now](#)

Book smart.



The new, more-to-love MacBook.

Faster is just the beginning. The new MacBook features the latest Intel Core 2 Duo processors, larger hard drives, and up to 2GB of memory standard. Best of all, MacBook still starts at \$1149. It's the same does-everything-you-want notebook but better.

NEW More room for your stuff.

Store more on a larger hard drive with up to 250GB of storage. [Learn more](#)



Design

Eye-catching. All over.



A durable polycarbonate shell, a vibrant glossy display, and a low-profile keyboard make for an all-around experience as impressive as MacBook itself.

[Learn more](#)

Features

Fast gets faster.



The new MacBook picks up considerable speed — up to 2.4GHz — with Intel's next-generation Core 2 Duo processor. Run your applications faster than ever before. [Learn more](#)

Wireless

Do everything, anywhere.



Built into MacBook is advanced AirPort Extreme 802.11n Wi-Fi. So you can get online at home, school, the office, and anywhere you find Wi-Fi.

[Learn more](#)

MacBook
Starting at \$1149



- Find an [Apple Shop](#)
- Find an [Apple Retail Store](#)
- Find your [local authorized reseller](#)

Buy Now

Considering a Mac

- Why you'll love a Mac
- Which Mac are you?
- Which MacBook are you?
- How to move to Mac
- Watch the ads

Macs

- Mac Pro
- Mac mini
- MacBook
- MacBook Air
- MacBook Pro
- iMac
- Accessories**
- Mighty Mouse
- Keyboard
- Cinema Displays

Wi-Fi Base Stations

- AirPort Express
- AirPort Extreme
- Time Capsule
- Which Wi-Fi are you?
- Servers**
- Servers Overview
- Xserve
- Xserve RAID
- Xsan
- Mac OS X Server

.Mac

- Learn more
- Log in
- Mac OS X**
- 10.5 Leopard
- QuickTime**
- Movie Trailers
- QuickTime Player
- QuickTime Pro

Applications

- iLife
- iWork
- Aperture
- Final Cut Studio
- Final Cut Express
- Logic Pro
- Logic Express
- Shake
- Remote Desktop

Developer

- Developer Connection
- Membership Info
- Products Guide
- Markets**
- Education
- Creative Pro
- IT Pro
- Science
- Small Business

Support

- Where can I buy a Mac?
- Online Support
- Personal Shopping
- Genius Bar
- Workshops
- One to One
- ProCare

Shop the [Apple Online Store](#) (1-800-MY-APPLE), visit an [Apple Retail Store](#), or find a [reseller](#).

Look smart. Look smart. Look smart.



Streamlined to go.

A mere 1.08 inches thin and weighing only 5.0 pounds, MacBook cuts a slim profile on any desk (or in any backpack or briefcase). And since MacBook is sure to become your constant companion, a durable polycarbonate shell keeps it ready for the rough and tumble of everyday life.



Looking good.

Whether you're working on your next Keynote presentation or watching a movie before you catch a flight, every document, video, and photo on your MacBook will look sharp on the glossy 13.3-inch widescreen display. With pixel-perfect 1280-by-800 resolution, it's great for viewing and working with media.



Key figure.

MacBook features a unique keyboard design that sits flush against the bed for a lower profile. That means you experience a firm, responsive touch when typing. Now that ought to make your fingers happy.

Time Capsule.

Wireless backup is here.



Which MacBook are you?



Personal Shopping



MacBook. Available today.



- Find an [Apple Shop](#)
- Find an [Apple Retail Store](#)
- Find your [local authorized reseller](#)

Buy Now

Français Mac MacBook Design

Considering a Mac

- Why you'll love a Mac
- Which Mac are you?
- Which MacBook are you?
- How to move to Mac
- Watch the ads

Macs

- Mac Pro
- Mac mini
- MacBook
- MacBook Air
- MacBook Pro
- iMac

Accessories

- Mighty Mouse
- Keyboard
- Cinema Displays

Wi-Fi Base Stations

- AirPort Express
- AirPort Extreme
- Time Capsule
- Which Wi-Fi are you?

Servers

- Servers Overview
- Xserve
- Xserve RAID
- Xsan
- Mac OS X Server

.Mac

- Learn more
- Log in

Mac OS X

- 10.5 Leopard

QuickTime

- Movie Trailers
- QuickTime Player
- QuickTime Pro

Applications

- iLife
- iWork
- Aperture
- Final Cut Studio
- Final Cut Express
- Logic Pro
- Logic Express
- Shake
- Remote Desktop

Developer

- Developer Connection
- Membership Info
- Products Guide

Markets

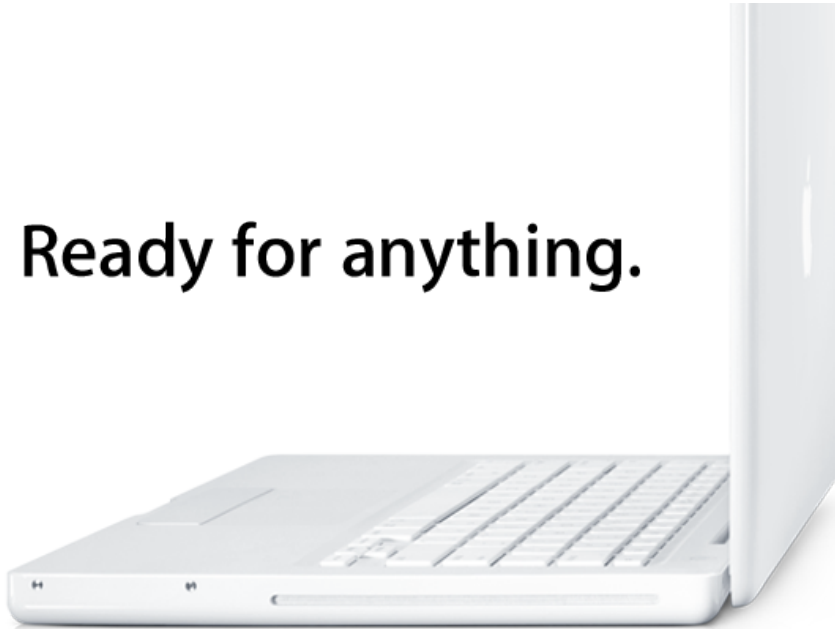
- Education
- Creative Pro
- IT Pro
- Science
- Small Business

Support

- Where can I buy a Mac?
- Online Support
- Personal Shopping
- Genius Bar
- Workshops
- One to One
- ProCare

Shop the Apple Online Store (1-800-MY-APPLE), visit an Apple Retail Store, or find a reseller.

Ready for anything.



More is more.

Music, photos, movies — not to mention your documents and other files — all start adding up. And add up they can, because the new MacBook offers larger hard drives across the line. With up to 2GB of memory standard, you can multi-task like never before.



Making connections.

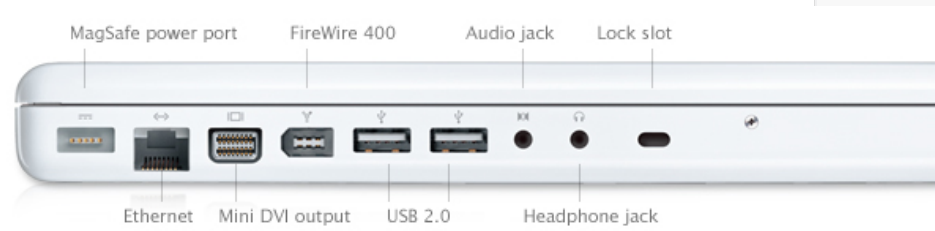
Better than ever.

Inside the new MacBook is the latest Intel Core 2 Duo processor based on 45nm-process technology and advanced Core microarchitecture. This powerful technology lets Intel create hundreds of millions of microscopic 45-nanometer transistors. And the advancements keep advancing with 3MB of shared L2 cache and a newly enhanced SSE4 vector engine. Translation: you get a MacBook with snappier performance that runs applications faster and more efficiently than ever before.



Click here to see application performance for the new MacBook [Learn more](#)

Sometimes your work needs room. So extend your MacBook desktop by connecting a 20- or 23-inch Apple Cinema Display. But why stop the add-ons there? Your MacBook also includes two USB 2.0 ports, a FireWire 400 port, Gigabit Ethernet, audio input and headphone jacks, and a convenient lock slot.



When you want to burn a party mix CD or a Hollywood-caliber iMovie creation, do so on a 24x Combo drive or an 8x double-layer SuperDrive.

Power play.



The MagSafe Power Adapter is just that: a magnetic connection instead of a physical one. So tripping over a power cord won't send your shiny new MacBook flying off a table or desk. The cord simply breaks cleanly away, without

damage to either the cord or the system.



Magnetic attraction.

Opening and closing your MacBook is a pleasure, thanks to a magnetic latch that catches without a catch. And because it's a magnet, there are no moving parts to snag, jam, or break.

Lights, MacBook, action.

Cleverly integrated above your MacBook display is an iSight camera. You can be there without being there using iChat. Video chat with a buddy, share a photo slideshow with Mom, or run through a presentation with a colleague. Since you're close-up ready, use iSight with Photo Booth for fun photo effects. Or star in your own indie flick with iMovie. Like everything Mac, your iSight just works. No need to waste valuable primping time installing software or configuring the camera. Just smile.



Two-finger scroll.

With two-finger scrolling, the trackpad becomes a fast track to wherever you want to go. And if you come from a right-click world, it's easy to make the MacBook fit in your comfort zone. There are shortcuts for right-click functionality, forward delete, and more.

Time Capsule.

Wireless backup is here.



Which MacBook are you?



Personal Shopping



MacBook. Available today.



- Find an [Apple Shop](#) Buy Now
- Find an [Apple Retail Store](#)
- Find your [local authorized reseller](#)

- Which Mac are you?
- Which MacBook are you?
- How to move to Mac
- Watch the ads
- Mac mini
- MacBook
- MacBook Air
- MacBook Pro
- iMac
- **Accessories**
 - Mighty Mouse
 - Keyboard
 - Cinema Displays
- AirPort Extreme
- Time Capsule
- Which Wi-Fi are you?

Servers

- Servers Overview
- Xserve
- Xserve RAID
- Xsan
- Mac OS X Server

- Log in
- **Mac OS X**
 - 10.5 Leopard

QuickTime

- Movie Trailers
- QuickTime Player
- QuickTime Pro

- iWork
- Aperture
- Final Cut Studio
- Final Cut Express
- Logic Pro
- Logic Express
- Shake
- Remote Desktop

- Membership Info
- Products Guide
- **Markets**
 - Education
 - Creative Pro
 - IT Pro
 - Science
 - Small Business

- Online Support
- Personal Shopping
- Genius Bar
- Workshops
- One to One
- ProCare

[Apple](#)
[Online](#)
[Store](#)
(1-
800-
MY-
APPLE),
visit an
[Apple](#)
[Retail](#)
[Store](#),
or find
a
[reseller](#).



Freedom built in. **Freedom built in.**

The wireless standard.

MacBook comes with built-in wireless capabilities that let you do everything you need to do,



802.11n

anywhere you need to do it. Wi-Fi networks show up right on your desktop. Just click and connect, and you can surf the web, send email, video chat, and more. Easily share files with other users on the network using Bonjour. And stay in sync with your Bluetooth-enabled phone courtesy of Bluetooth 2.0 + EDR.



Wireless backup.

Time Machine is the breakthrough automatic backup that's built right into Mac OS X. Now Time Capsule — a server-grade hard drive plus Wi-Fi base station — lets you use Time Machine to wirelessly back up your files. And it happens in the background so you never have to worry about backing up again.

[Learn more](#)

Wireless printing.

AirPort Extreme, AirPort Express, and Time Capsule all include a USB port, so you can connect a printer and print wirelessly from your MacBook anywhere in your home. And the convenience of wireless printing is extended not only to you, but to others on your network, including PC users.

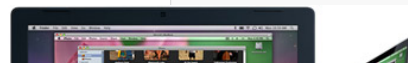
[Learn more](#)



Chat wirelessly.

iChat turns any video chat into an event. Video backdrops, Photo Booth effects, photo slideshows, Keynote presentations, even movies on your MacBook — you can share it all using iChat. [Learn more](#)

802.11n Wi-Fi offers up to five times the performance and up to twice the range of previous generations.



Back to My Mac.



Let's say you're at work and you left an important file on your computer at home. With Back to My Mac, a feature of .Mac, you can get to any Leopard-based Mac remotely with just a click. .Mac finds your Mac computers over the Internet and displays them in the Leopard Finder on the Mac you're using. So wherever you go, all your files follow you. [Learn more](#)

Which WiFi are you?

Choose the best base station for you.



Which MacBook are you?



Personal Shopping



MacBook. Available today.



- Find an [Apple Shop](#)
- Find an [Apple Retail Store](#)
- Find your [local authorized reseller](#)

[Français](#)
»
[Mac](#)
»
[MacBook](#)
»
[Wireless](#)

Considering a Mac

- Why you'll love a Mac
- Which Mac are you?
- Which MacBook are you?
- How to move to Mac
- Watch the ads

Macs

- Mac Pro
- Mac mini
- MacBook
- MacBook Air
- MacBook Pro
- iMac

Accessories

- Mighty Mouse
- Keyboard
- Cinema Displays

Wi-Fi Base Stations

- AirPort Express
- AirPort Extreme
- Time Capsule
- Which Wi-Fi are you?

Servers

- Servers Overview
- Xserve
- Xserve RAID
- Xsan
- Mac OS X Server

.Mac

- Learn more
- Log in

Mac OS X

- 10.5 Leopard

QuickTime

- Movie Trailers
- QuickTime Player
- QuickTime Pro

Applications

- iLife
- iWork
- Aperture
- Final Cut Studio
- Final Cut Express
- Logic Pro
- Logic Express
- Shake
- Remote Desktop

Developer

- Developer Connection
- Membership Info
- Products Guide

Markets

- Education
- Creative Pro
- IT Pro
- Science
- Small Business

Support

- Where can I buy a Mac?
- Online Support
- Personal Shopping
- Genius Bar
- Workshops
- One to One
- ProCare

Shop the [Apple Online Store](#) (1-800-MY-APPLE), visit an [Apple Retail Store](#), or find a [reseller](#).

Software. Integrated.

Every Mac comes with software designed to let all your photos, videos, and content work together. Every Mac comes with software designed to let all your photos, videos, and content work together.



Mac OS X Leopard

Leopard, the latest release of Mac OS X, is loaded with features that let you do more with less effort. [Learn more](#)



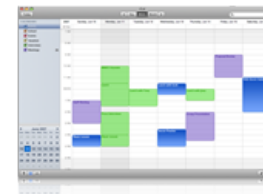
Safari

The world's fastest web browser adds new features and includes security to



Mail

Mail simplifies email with smart organizational tools. It also incorporates



Address Book and iCal

iCal, the streamlined calendar program, and Address Book are integrated with

enhance your online experience. [Learn more](#)



Time Machine

Backing up your files has just gotten a lot easier. See how your system looked on a given day and restore files with a click. [Learn more](#)

convenient notes and to-do features. [Learn more](#)



iChat

Now you can video chat with up to three people, deliver presentations with iChat Theater, and of course, send instant messages. [Learn more](#)

Mail for easy and seamless day planning. [Learn more](#)



Boot Camp

For those times when you need to run a Windows application, Boot Camp lets you start up your Mac in Windows. [Learn more](#)



iPhoto

iPhoto organizes your digital photos and makes it easy for you to browse, edit, and share them with the world. [Learn more](#)



iMovie

iMovie makes viewing, enjoying, and sharing your video intuitive. Publishing to the Internet has never been easier. [Learn more](#)

Get even more out of your Mac.



iWeb

Take your life to the web and the world by easily creating websites that are more custom, more complete, and more you. [Learn more](#)



iWork '08

Streamlined word processing, stunning presentations, and now spreadsheets. Work just got better. [Learn more](#)



MobileMe

Keep your email, contacts, and calendar in sync across your Mac, PC, iPhone or iPod touch. Easily share photos and store files online, and more. [Learn more](#)



Office

Microsoft Office for Mac is made specifically for the Mac. So you can use Word, PowerPoint, and Excel. [Learn more](#)



Aperture 2

Aperture 2 delivers streamlined tools for moving photos from capture to output with uncompromising quality. [Learn more](#)



Final Cut Express 4

Your ticket to more advanced video editing, Final Cut Express 4 delivers a powerful and extensible toolset at a new price. [Learn more](#)

Which WiFi are you?

Choose the best base station for you.



Which MacBook are you?



Logic Express 8

Translate musical inspiration into professional recordings. Easy-to-use features put sophisticated tools at your fingertips. [Learn more](#)

The Mac experience. Online.

Sync, Web Gallery, Email and more.



MacBook. Available today.



- Find an [Apple Shop](#) [Buy Now](#)
- Find an [Apple Retail Store](#)
- Find your [local authorized reseller](#)

Français > Mac > MacBook > Mac OS X + iLife

Considering a Mac

- Why you'll love a Mac
- Which Mac are you?
- Which MacBook are you?
- How to move to Mac
- Watch the ads

Macs

- Mac Pro
- Mac mini
- MacBook
- MacBook Air
- MacBook Pro
- iMac

Accessories

- Mighty Mouse
- Keyboard
- Cinema Displays

Wi-Fi Base Stations

- AirPort Express
- AirPort Extreme
- Time Capsule
- Which Wi-Fi are you?

Servers

- Servers Overview
- Xserve
- Xserve RAID
- Xsan
- Mac OS X Server

.Mac

- Learn more
- Log in

Mac OS X

- 10.5 Leopard

QuickTime

- Movie Trailers
- QuickTime Player
- QuickTime Pro

Applications

- iLife
- iWork
- Aperture
- Final Cut Studio
- Final Cut Express
- Logic Pro
- Logic Express
- Shake
- Remote Desktop

Developer

- Developer Connection
- Membership Info
- Products Guide

Markets

- Education
- Creative Pro
- IT Pro
- Science
- Small Business

Support

- Where can I buy a Mac?
- Online Support
- Personal Shopping
- Genius Bar
- Workshops
- One to One
- ProCare

Shop the [Apple Online Store](#) (1-800-MY-APPLE), visit an [Apple Retail Store](#), or find a reseller.



Store

Mac

iPod + iTunes

iPhone

Downloads

Support

MacBook
MacBook

Overview

Design

Features

Wireless

Mac OS X + iLife

Tech Specs

Français

Buy Now

Technical Specifications

Size and weight

Height:	2.75 cm (1.08 inch)
Width:	32.5 cm (12.78 inches)
Depth:	22.7 cm (8.92 inches)
Weight:	2.27 kg (5.0 pounds) ¹



Connections and expansion



- MagSafe power port
- Gigabit Ethernet port
- Mini-DVI port
- FireWire 400 port (up to 400 Mbps)
- Two USB 2.0 ports (up to 480 Mbps)
- Audio line in
- Audio line out
- Kensington cable lock slot

Wireless

Built-in AirPort Extreme Wi-Fi wireless networking² (based on IEEE 802.11n draft specification); IEEE 802.11a/b/g compatible

802.11n

Built-in Bluetooth 2.0 +



Display



13.3-inch (diagonal) glossy widescreen TFT display with support for millions of colours

Supported resolutions: 1280 by 800 (native), 1152 by 720, 1024 by 768, 1024 by 640, 800 by 600, 800 by 500, 720 by 480, and 640 by 480 pixels at 16:10 aspect ratio; 1024 by 768, 800 by 600, and 640 by 480 pixels at 4:3 aspect ratio; 720 by 480 pixels at 3:2 aspect ratio

Graphics and video support

Intel GMA X3100 graphics processor with 144MB of DDR2 SDRAM shared with main memory³

Extended desktop and video mirroring: Simultaneously supports full native resolution on the built-in display and up to 1920 by 1200 pixels on an external display, both at millions of colours

Built-in iSight camera



Mini-DVI port

Pure digital video output

DVI output using mini-DVI to DVI adapter (optional)

EDR (Enhanced Data Rate)



Built-in 10/100/1000BASE-T Gigabit Ethernet (RJ-45 connector)

Audio

- Built-in stereo speakers
- Built-in omnidirectional microphone
- Combined optical digital audio input/audio line in (minijack)
- Combined optical digital audio output/audio line out (minijack)

Installed software

- Mac OS X v10.5 Leopard (includes Time Machine, Quick Look, Spaces, Spotlight, Dashboard, Mail, iChat, Safari, Address Book, QuickTime, iCal, DVD Player, Photo Booth, Front Row, Xcode Developer Tools)
- iLife '08 (includes iTunes, iPhoto, iMovie, iDVD, iWeb, GarageBand)

Environmental status

- Majority of circuit board laminates are free of brominated flame retardants
- Majority of internal cables are PVC-free
- Meets ENERGY STAR requirements

VGA output using mini-DVI to VGA adapter (optional)

Composite output using mini-DVI to video adapter (optional)

S-video output using mini-DVI to video adapter (optional)

Input



- Built-in full-size keyboard with 78 (U.S.) or 79 (ISO) keys, including 12 function keys and 4 arrow keys (inverted "T" arrangement)
- Solid-state scrolling trackpad for precise cursor control; supports two-finger scrolling, tap, double-tap, and drag capabilities

Processor and memory

- 2.1GHz or 2.4GHz Intel Core 2 Duo processor with 3MB on-chip shared L2 cache running 1:1 with processor speed
- 800MHz frontside bus
- 1GB (two 512MB SO-DIMMs) or 2GB (two 1GB SO-DIMMs) of 667MHz DDR2 SDRAM; two SO-DIMM slots support up to 4GB



Standard
2.1 GHz

Standard
2.4 GHz

Storage





2.1GHz MacBook

- o 120GB 5400-rpm Serial ATA hard disk drive; optional 160GB or 250GB 5400-rpm drive4
- o 24x slot-loading Combo drive (DVD-ROM/CD-RW)

Writes CD-R discs at up to 24x speed; writes CD-RW discs at up to 16x speed; reads CDs at up to 24x speed; reads DVDs at up to 8x speed

2.4GHz MacBook

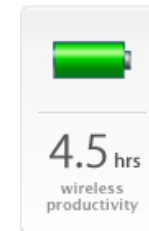
- o 160GB or 250GB 5400-rpm Serial ATA hard disk drive
- o 8x slot-loading SuperDrive (DVD±R DL/DVD±RW/CD-RW)

Maximum write: 8x DVD-R, DVD+R; 4x DVD-R DL (double layer), DVD+R DL (double layer), DVD-RW, DVD+RW; 24x CD-R; 10x CD-RW

Maximum read: 8x DVD-R, DVD+R, DVD-ROM; 6x DVD-ROM (double layer DVD-9), DVD-R DL (double layer), DVD+R DL (double layer), DVD-RW, and DVD+RW; 24x CD



Battery and power⁵

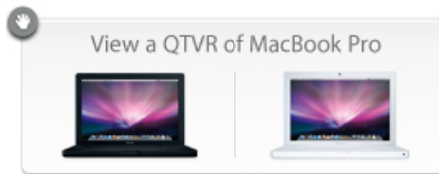


55-watt-hour lithium-polymer battery

60W MagSafe Power Adapter with cable management system

Electrical and operating requirements

- o Line voltage: 100V to 240V AC
- o Frequency: 50Hz to 60Hz
- o Operating temperature: 50° to 95° F (10° to 35° C)
- o Storage temperature: -13° to 113° F (-24° to 45° C)
- o Relative humidity: 0% to 90% noncondensing
- o Maximum operating altitude: 10,000 feet
- o Maximum storage altitude: 15,000 feet
- o Maximum shipping altitude: 35,000 feet



What's in the box

Configurations

- MacBook
- Lithium-polymer battery
- Display cleaning cloth
- Install/restore DVDs
- 60W MagSafe Power Adapter, AC wall plug, and power cord (MB402LL/A)
- 2.4GHz MacBook Power Adapter, AC power cord (MB403LL/A)
- 2.4GHz MacBook (MB404LL/A)
- Printed and electronic documentation

	2.1GHz Intel Core 2 Duo	2.4GHz Intel Core 2 Duo	2.4GHz Intel Core 2 Duo
Colour	White	White	Black
Processor	2.1GHz Intel Core 2 Duo	2.4GHz Intel Core 2 Duo	2.4GHz Intel Core 2 Duo
L2 cache	3MB shared	3MB shared	3MB shared
System bus	800MHz	800MHz	800MHz
Memory	1GB (two 512MB) of 667MHz DDR2 SDRAM (PC2-5300); supports up to 4GB	2GB (two 1GB) of 667MHz DDR2 SDRAM (PC2-5300); supports up to 4GB	2GB (two 1GB) of 667MHz DDR2 SDRAM (PC2-5300); supports up to 4GB
Hard drive ⁴	120GB Serial ATA; 5400 rpm	160GB Serial ATA; 5400 rpm	250GB Serial ATA; 5400 rpm
Slot-loading optical drive	Combo drive (DVD-ROM/CD-RW)	8x SuperDrive (DVD±R DL/DVD±RW/CD-RW)	
Graphics	Intel GMA X3100 graphics processor with 144MB of DDR2 SDRAM shared with main memory ³		



Video	Built-in iSight camera; mini-DVI output port with support for DVI, VGA, S-video, and composite video (requires adapters, sold separately)
Display	13.3-inch (diagonal) glossy TFT widescreen display, 1280 by 800 resolution
FireWire	One FireWire 400 port (up to 400 Mbps)
USB	Two USB 2.0 ports (up to 480 Mbps)
Audio	Built-in stereo speakers, built-in omnidirectional microphone, combined optical digital audio input/audio line in, combined optical digital audio output/audio line out
Networking	Built-in 10/100/1000BASE-T (Gigabit) Ethernet
Wireless	Built-in AirPort Extreme Wi-Fi (based on IEEE 802.11n draft specification) ² ; built-in Bluetooth 2.0 + EDR (Enhanced Data Rate) module
Hardware accessories	60W MagSafe Power Adapter, AC wall plug, power cord, lithium-polymer battery
Limited warranty and service	Your MacBook comes with 90 days of free telephone support and a one-year limited warranty. Purchase the AppleCare Protection Plan to extend your service and support to three years from your computer's purchase date. Only the AppleCare Protection Plan provides you with direct telephone support from Apple technical experts and the assurance that repairs will be handled by Apple-authorized technicians using genuine Apple parts. For more information, visit Apple support or call 800-823-2775.
Apple and the global environment	Learn more about Apple's dedication to reducing the environmental impact of our products and processes. The Apple Product Environmental Specification details the environmental attributes of our products.
Recycling	Apple takes a holistic view of materials management and waste minimization. Learn more about how to recycle your Mac.

Options



Time Capsule

Configure to order

- 160GB (5400 rpm) hard drive
- 250GB (5400 rpm) hard drive
- Up to 4GB of 667MHz DDR2 SDRAM

1. Actual weight varies by configuration and manufacturing

Accessories

- [AirPort Extreme Base Station](#) (MA053LL/A)
- [AirPort Express Base Station](#) (M9470LL/A)
- [MagSafe Airline Adapter](#) (MB441Z/A)

Time Capsule is a full-featured AirPort Extreme base station with a built-in hard drive. Back up wirelessly and create a Wi-Fi network with one device.

- 500GB or 1TB server-grade hard drive
- Wi-Fi Certified for 802.11n draft 2.0
- USB port for connecting a USB printer or USB external hard drive

compatible with AirPort.

3. Memory available to Mac OS X may vary depending on graphics needs. Minimum graphics memory usage is 144MB. An additional 16MB is required when using an external display.
4. 1GB=1 billion bytes. Actual formatted capacity less.
5. Battery life depends on configuration and use. See www.apple.ca/batteries for more information. The wireless productivity test measures battery life by wirelessly browsing various websites and editing text in a word processing document with display brightness set to 50%.

- [Apple Remote](#) (MA128G/B)
- [Apple USB Modem](#) (MA034Z/A)
- [Apple Mini-DVI to DVI Adapter](#) (M9321G/B)
- [Apple Mini-DVI to VGA Adapter](#) (M9320G/A)
- [Aperture 2](#) (MA715Z/A)
- [Final Cut Express](#) (MA261Z/A)
- [Logic Express](#) (MA806LL/A)
- [iWork '08](#) (MA790Z/A)

process.

2. Wireless Internet access requires a base station or other wireless access point and Internet access (fees may apply). Some ISPs are not currently

- [Apple Mini-DVI to Video Adapter](#) (M9319G/A)
- [AppleCare Protection Plan](#) (MA519LL/A)
- [.Mac Subscription](#) (MA927Z/A)
- [Apple Wireless Keyboard](#) (MB167LL/A)
- [Apple wireless Mighty Mouse](#) (MB111LL/A)
- [Apple Keyboard](#) (MB110LL/A)
- [Apple wired Mighty Mouse](#) (MB112LL/A)

Time Capsule.

Wireless backup is here.



Which MacBook are you?



Personal Shopping



MacBook. Available today.



- Find an [Apple Shop](#) Buy Now
- Find an [Apple Retail Store](#)
- Find your [local authorized reseller](#)



Français > Mac > MacBook > Technical Specifications

Considering a Mac

- Why you'll love a Mac
- Which Mac are you?
- Which MacBook are you?
- How to move to Mac
- Watch the ads

Macs

- Mac Pro
- Mac mini
- MacBook
- MacBook Air
- MacBook Pro
- iMac

Accessories

- Mighty Mouse
- Keyboard
- Cinema Displays

Wi-Fi Base Stations

- AirPort Express
- AirPort Extreme
- Time Capsule
- Which Wi-Fi are you?

Servers

- Servers Overview
- Xserve
- Xserve RAID
- Xsan
- Mac OS X Server

.Mac

- Learn more
- Log in

Mac OS X

- 10.5 Leopard

QuickTime

- Movie Trailers
- QuickTime Player
- QuickTime Pro

Applications

- iLife
- iWork
- Aperture
- Final Cut Studio
- Final Cut Express
- Logic Pro
- Logic Express
- Shake
- Remote Desktop

Developer

- Developer Connection
- Membership Info
- Products Guide

Markets

- Education
- Creative Pro
- IT Pro
- Science
- Small Business

Support

- Where can I buy a Mac?
- Online Support
- Personal Shopping
- Genius Bar
- Workshops
- One to One
- ProCare

Shop the [Apple Online Store](#) (1-800-MY-APPLE), visit an [Apple Retail Store](#), or find a reseller.